



## Christian Street, London E1

Price £325 per week - Furnished





# Description

A large studio apartment in the popular Hodgeson House, part of the Space E1 development.

Situated on the 1st floor, this spacious apartment is offered fully furnished and comprises reception area with open plan fitted kitchen, private balcony overlooking the courtyard, separate sleeping area with contemporary en-suite, wood flooring, and excellent storage.

The development benefits from an on-site gym and concierge, and is conveniently located for Shadwell DLR and Shadwell Overground stations (approximately 0.4 miles) in zone 2.

- Studio
- 1 Bathroom
- Balcony
- 12 Hour concierge
- Gym
- 0.5 miles from Tower Gateway DLR
- Approx. 421 sq ft (39.1 sq m)
- Furnished
- EPC: B

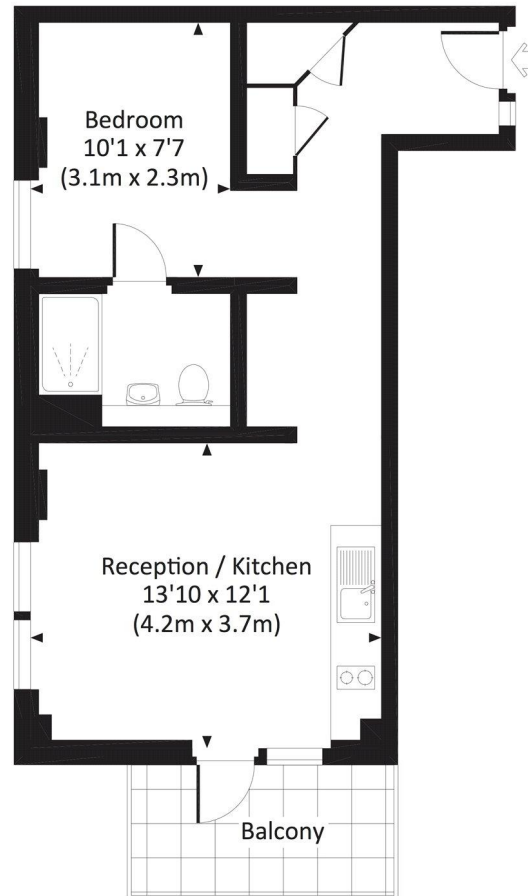


# Floorplan

421 sq ft | 39 sq m

## CHRISTIAN STREET, E1

Approx. gross internal area  
421 Sq Ft. / 39.1 Sq M.



### FIRST FLOOR

djd All measurements have been made in accordance with RICS Code of Measuring Practice which are approximate only and only for illustrative purposes. For the avoidance of doubt, Dowling Jones Design shall not be liable for any reliance on these measurements. © 2016 www.dowlingjones.com 020 7630 9933

City  
25 Walbrook The Walbrook  
Building,  
London EC4N 8AF  
020 7337 4000

*Urban living, your way.*

[jll.co.uk/residential](http://jll.co.uk/residential)

© 2019 Jones Lang LaSalle IP, Inc. All rights reserved. All information contained herein is from sources deemed reliable; however, no representation or warranty is made to the accuracy thereof.

