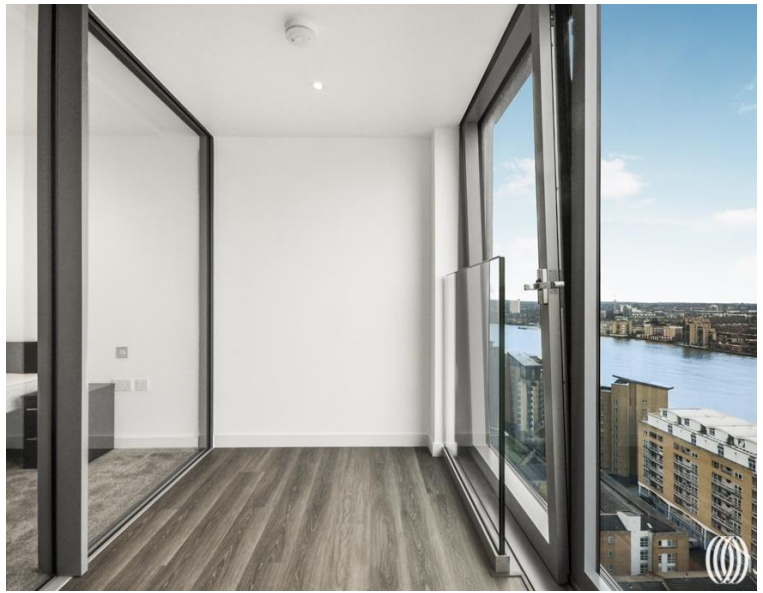




10 Marsh Wall, London E14
Price £480 per week - Furnished







Description

Be the first to occupy this one bedroom, one bathroom apartment on the 19th floor of the exciting new tower, Landmark Pinnacle, with far reaching westerly views towards the Thames and iconic skyline of the City of London.

At 75 floors, Landmark Pinnacle is London's tallest residential towers with views that extend out across London's unmistakable monuments and waterways.

Luxurious apartments lead off elegant carpeted lobbies and are beautifully presented in a neutral palette of white walls, timber floors and brushed chrome and black ironmongery. The feel throughout is simple and sleek, with high-quality furnishings and fittings that complement, without detracting from, the spellbinding views across the water and landscape.

A stand-out feature of many of the residences is a winter garden which can be accessed from the living area and bedroom. It provides space to sit and even comfortably dine outdoors, bringing in the light and views without the accompanying drop in temperature.

As well as a private cinema, State-of-the-art amenities include a stunning 56th floor first class gym with a separate exercise st

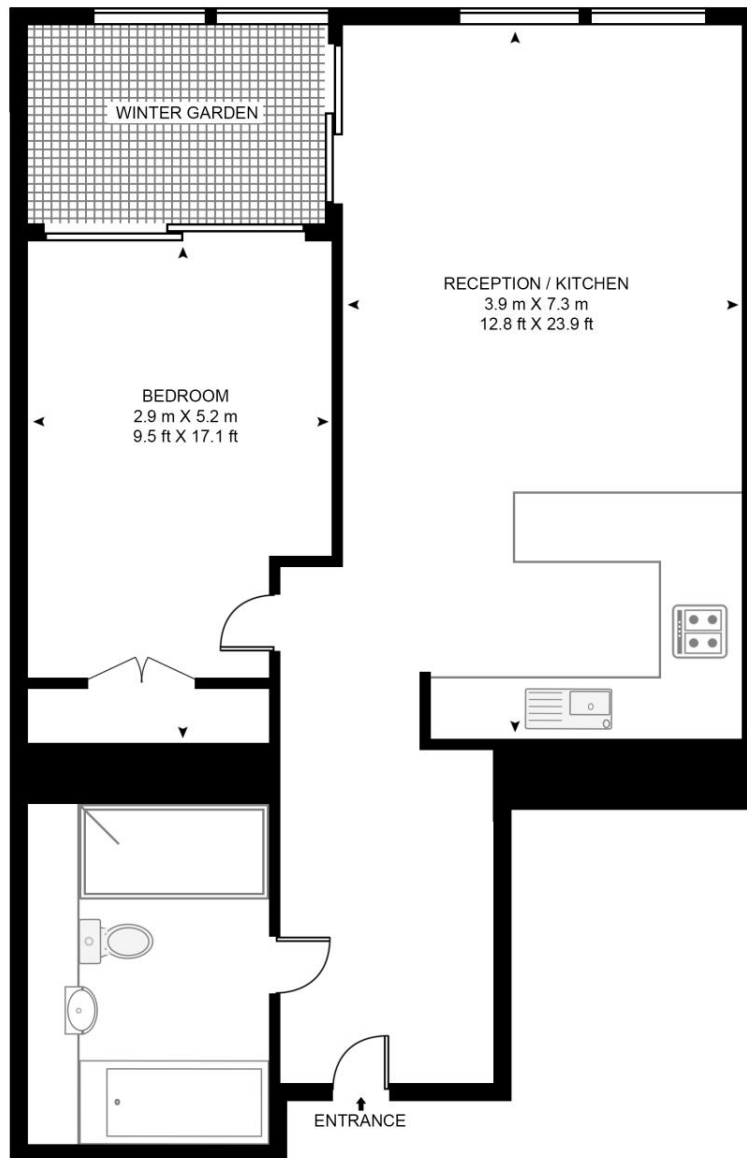
- Brand new
- 1 Bedroom
- 1 Bathroom
- 19th Floor
- 24 Hour concierge
- First class residents gym
- Communal roof terraces
- Canary Wharf Jubilee 0.5 mile
- Furnished
- EPC: TBC

Floorplan

585 sq ft | 54 sq m

LANDMARK PINNACLE

APPROXIMATE GROSS INTERNAL FLOOR AREA 588 SQ.FT (54.6 SQ.M)



NINETEENTH FLOOR

HDVA

This floor plan has been defined by the RICS Code of Measurement. This floor plan and all others are for approximate representative purposes only and upon usage is agreed to as such by the client.

WWW: hdvirtualart.com | TEL: 0203.974.1567 | EMAIL: info@hdvirtualart.com

Canary Wharf
11 Westferry Circus,
London E14 4HE
020 7715 9700
canarywharf@eu.jll.com

Urban living, your way.

jll.co.uk/residential

© 2019 Jones Lang LaSalle IP, Inc. All rights reserved. All information contained herein is from sources deemed reliable; however, no representation or warranty is made to the accuracy thereof.

