



DEVONSHIRE DRIVE,
GREENWICH SE10





This sizable and imposing Victorian residence is located on one of West Greenwich's most desirable locations within the Ashburnham Conservation Area.

Presented in immaculate condition throughout with well thought out and proportioned rooms this home has it all. Principally the accommodation offers four/five good sized bedrooms and three bathrooms, the master with en suite. There is also a handy cloakroom with separate WC. The property has ample living space too with receptions on the hall floor and a separate kitchen and dining room on the ground floor. There is also a stunning dual aspect day/garden room. To the rear comes a secluded, mature South facing garden.

This property is decorated in neutral tones and has many features of the era yet benefitting from all of the up to date modern features today's buyers demand.

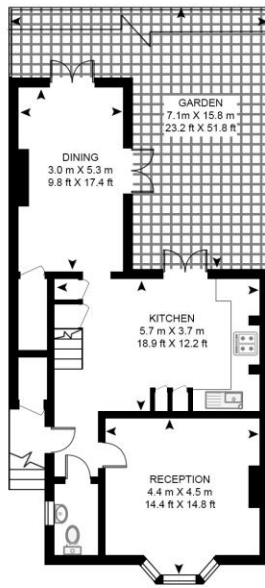
Early viewings are highly recommended.

- 5 Bedrooms
- 3 Bathrooms + WC
- Private south-facing garden
- Victorian semi-detached house
- Ashburnham Conservation Area
- Approx. 2,118 sq ft (196.8 sq m)
- Popular location
- Close to transport links
- Beautifully presented throughout
- EPC: D

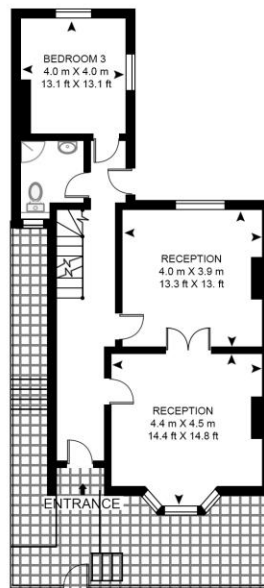
PRICE
£1,550,000

LOCAL AUTHORITY
Royal Borough of Greenwich

DEVONSHIRE DRIVE
APPROXIMATE GROSS INTERNAL FLOOR AREA 2118 SQ.FT (196.8 SQ.M)



LOWER GROUND FLOOR



RAISED GROUND FLOOR



FIRST FLOOR



This floor plan has been defined by the RICS Code of Measurement. This floor plan and all others are for approximate representative purposes only and upon usage is agreed to as such by the client.

WWW: hdvirtualart.com | TEL: 0203.974.1567 | EMAIL: info@hdvirtualart.com

22 College Approach
Greenwich
London
SE10 9HY

These particulars are for general information only and do not constitute any part of an offer or contract. All statements contained therein are made without responsibility on the part of the vendors or lessors and are not to be relied upon as statement or representation of fact. Intending purchasers or lessees must satisfy themselves, by inspection, or otherwise, as to the correctness of each of the statements or dimensions contained in these particulars..