



Duke Street, London SW1Y

Price £700 per week - Furnished





Description

A brand newly refurbished, spacious and well presented fifth floor flat (with lift) in this sought after area of Mayfair. The property consists of master bedroom, one bathroom room, a large reception room with dining area and a fully fitted kitchen. Further benefits include wooden floors in the reception room and a wonderful terrace. Duke Street is conveniently located moments from the shopping and transport amenities of Green Park and Piccadilly Circus.

As well as paying the rent, you may also be required to make permitted payments. Please visit jll.co.uk/fees for details of fees which may be payable when renting a property. If your tenancy does not qualify as an AST, additional fees may apply.

- 1 Double bedroom
- 1 bathroom
- Reception room
- Kitchen
- Terrace
- Fifth floor
- Direct lift access
- Furnished
- EPC: D



Floorplan

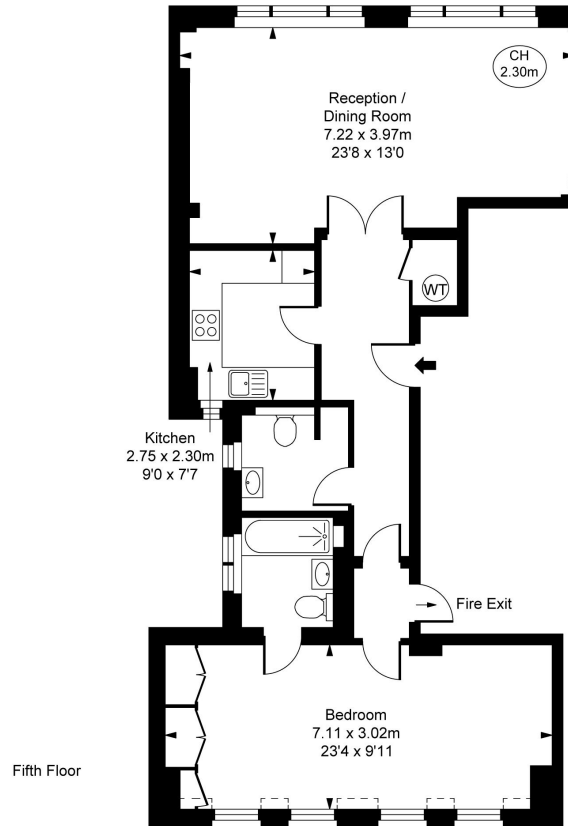
791 sq ft | 74 sq m

Duke Street, W1U
Approximate Gross Internal Area
73.51 sq m / 791 sq ft



(Including restricted height
under 1.5m (- - - -))

(CH = Ceiling Heights)



This plan is not to scale. It is for guidance and not for valuation purposes.
All measurements and areas are approximate only, and have been prepared in accordance with the current edition of the RICS Code of Measuring Practice.
© Fulham Performance

Mayfair and Marylebone
JLL, 30 Warwick Street,
London W1B 5NH

Urban living, your way.

jll.co.uk/residential

© 2019 Jones Lang LaSalle IP, Inc. All rights reserved. All information contained herein is from sources deemed reliable; however, no representation or warranty is made to the accuracy thereof.

