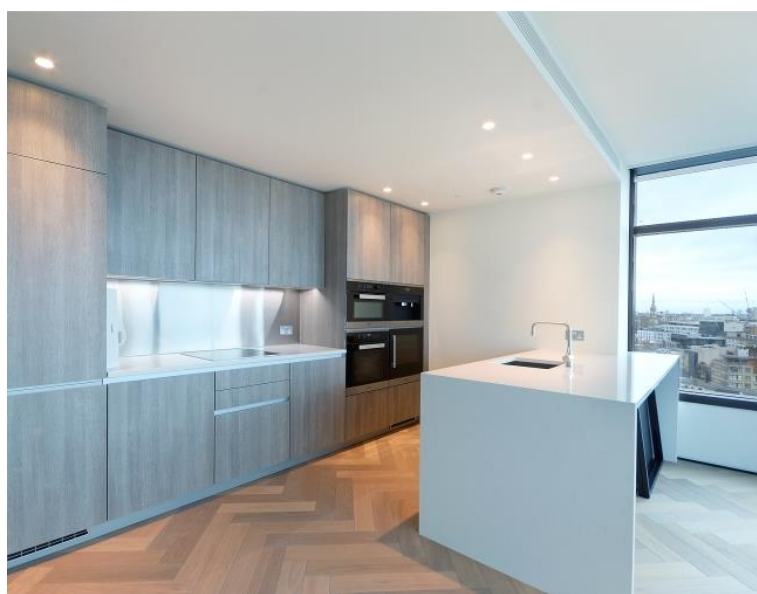


Worship Street, London EC2A

Price £800 per week - Furnished







Description

A stunning 2 bedroom in the iconic Principal Tower, EC2.

Offered fully furnished, this stunning 2 bedroom apartment is situated on the 10th floor and has spectacular Easterly views towards Canary Wharf, Stratford and the Olympic Park. The property comprises a spacious open plan reception with fully fitted kitchen, two double bedrooms with fitted wardrobes, two luxury Porcelain bathrooms with under floor heating, large balcony, comfort cooling and heating and oak herringbone flooring.

Principal Tower is in an idyllic location, a short walk to Liverpool Street Station (0.3 miles) as well as Shoreditch High Street Station (0.3 miles). The development boasts excellent amenities including a pool with Jacuzzi, spa, gymnasium, residents' lounge/bar, private cinema room and 24 hour concierge.

We understand that cooling / heating is delivered via a communal system for which separate charges apply.

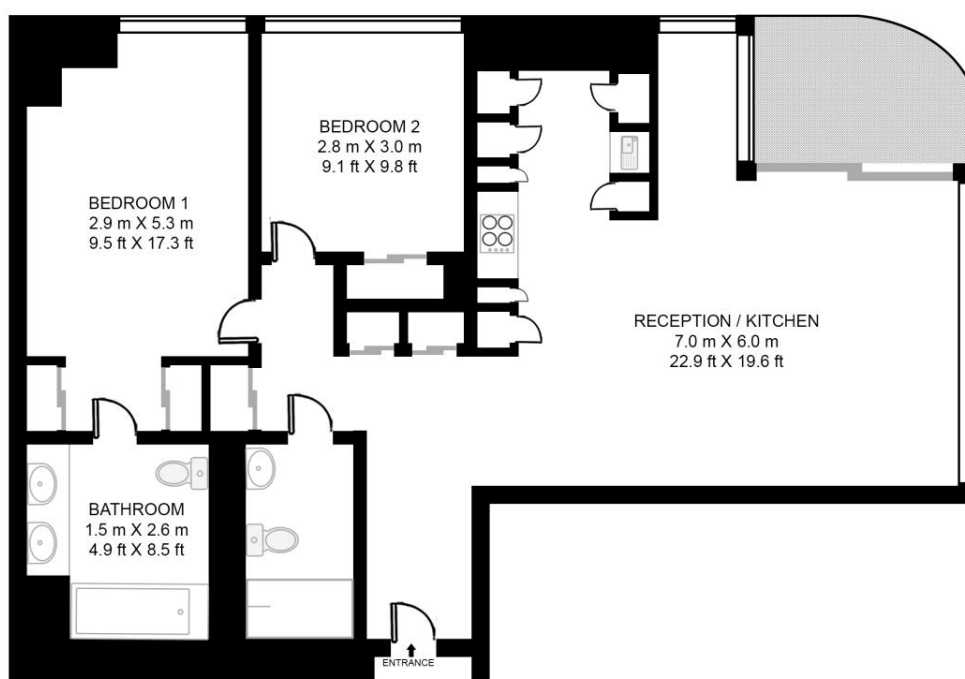
- 2 Bedroom
- 2 Bathrooms
- Balcony
- Residents' gym, swimming pool, sauna, jacuzzi and steam room
- 24 hour concierge
- 0.3 miles from Liverpool Street station
- Approx. 845.9 sq ft (78.6 sq m)
- Furnished
- EPC: B

Floorplan

845 sq ft | 79 sq m

PRINCIPAL TOWER, 2 PRINCIPAL PLACE, WORSHIP STREET, LONDON, EC2D

APPROXIMATE GROSS INTERNAL FLOOR AREA 882 SQ.FT (82 SQ.M)



TENTH FLOOR

HDVA

This floor plan has been defined by the RICS Code of Measurement. This floor plan and all others are for approximate representative purposes only and upon usage is agreed to as such by the client.

WWW: hdvirtualart.com | TEL: 0203.974.1567 | EMAIL: info@hdvirtualart.com

City
25 Walbrook The Walbrook
Building,
London EC4N 8AF
020 7337 4000

Urban living, your way.

jll.co.uk/residential

© 2019 Jones Lang LaSalle IP, Inc. All rights reserved. All information contained herein is from sources deemed reliable; however, no representation or warranty is made to the accuracy thereof.

