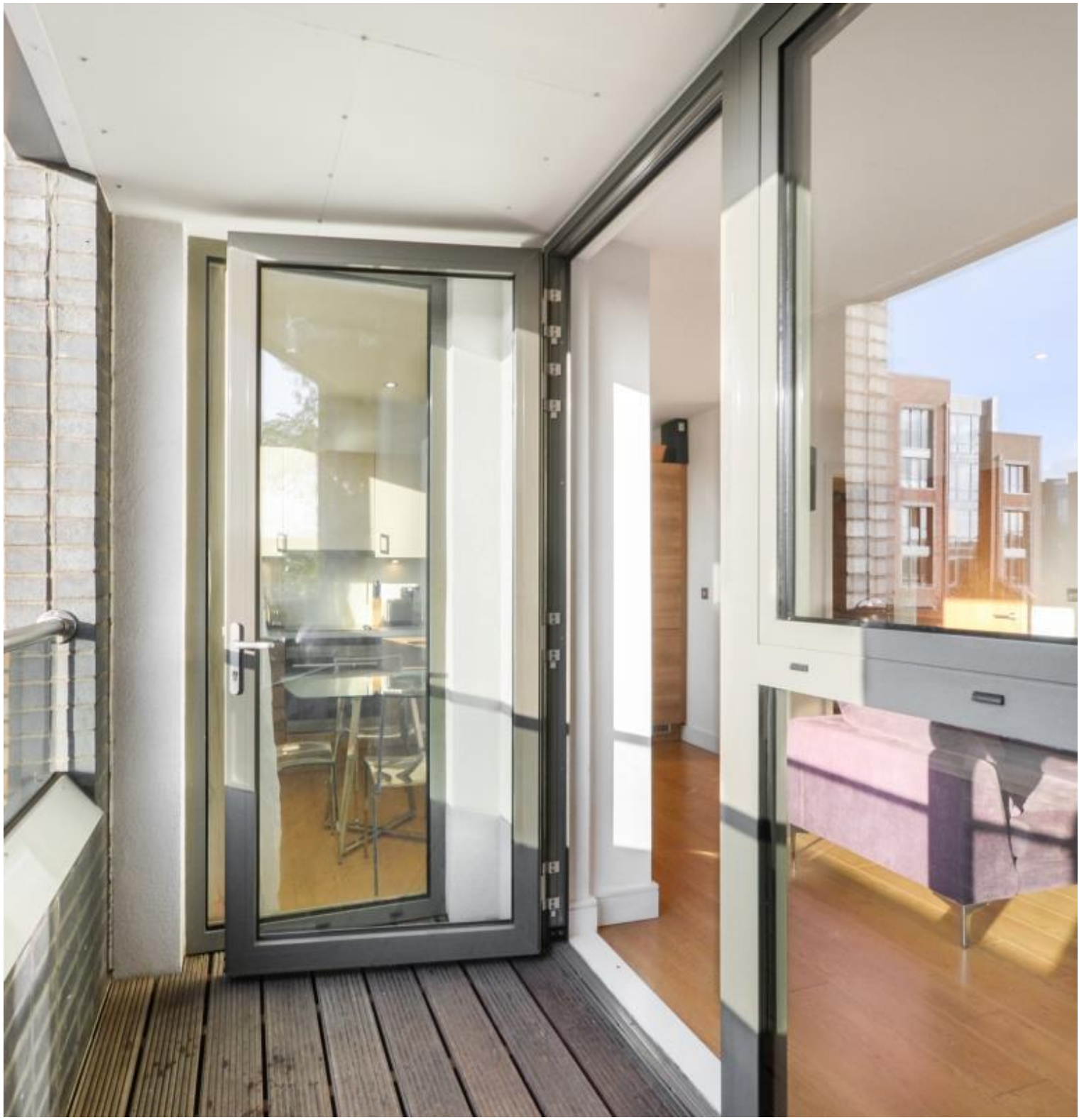


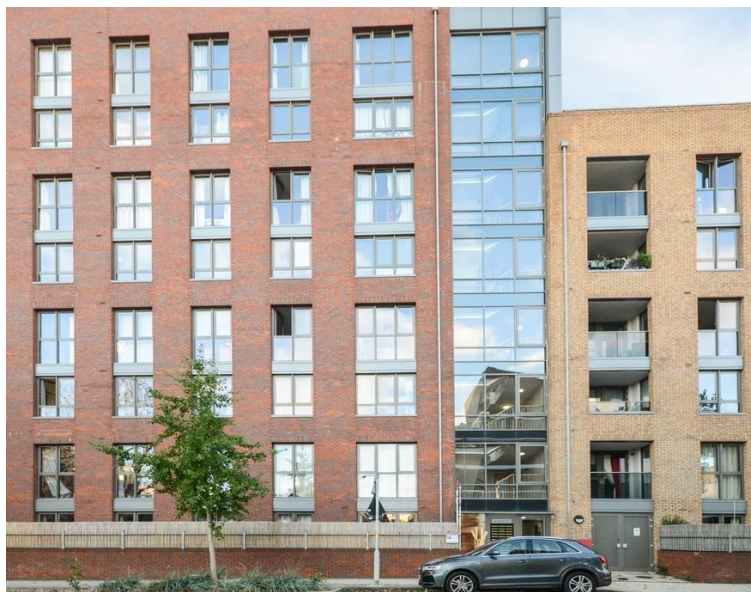


Silwood Street, London SE16

Guide price £350,000 Leasehold







Description

This fantastic modern one bedroom apartment has high spec fixtures and fittings throughout. The property is located perfectly between Surrey Quays Overground station and South Bermondsey mainline station which is just one stop from London bridge.

The property comprises of a large open plan fitted kitchen and living area leading to a good sized private balcony. Large double bedroom with fitted wardrobes. Family bathroom with bath and shower.

The property is available with no onward chain, early viewings are highly recommended.

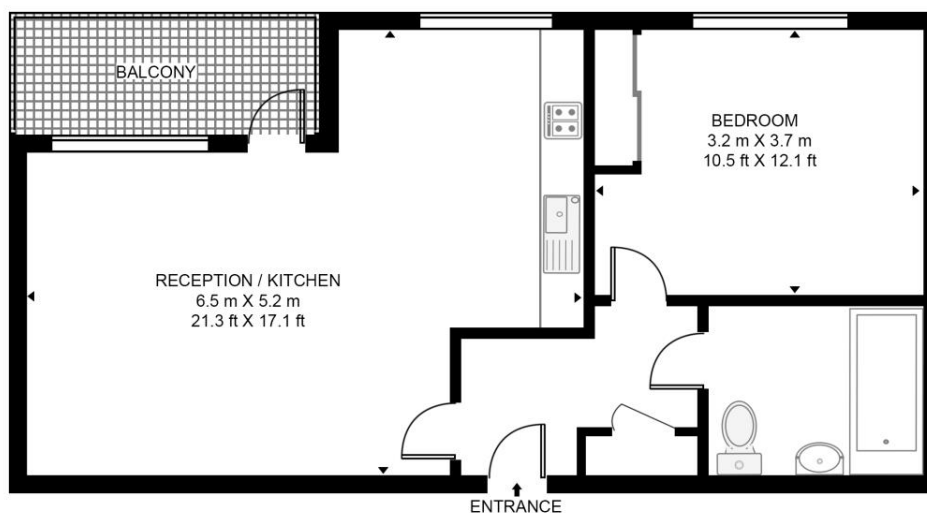
- 1 Bedroom
- 1 Bathroom
- Balcony
- Easy commute to London Bridge
- Modern
- Approx. 540 sq ft (50.2 sq m)
- Close to transport links
- Chain free
- EPC: B

Floorplan

540 sq ft | 50 sq m

DOWER COURT, SILWOOD STREET

APPROXIMATE GROSS INTERNAL FLOOR AREA 540 SQ.FT (50.2 SQ.M)



SECOND FLOOR

HDVA

This floor plan has been defined by the RICS Code of Measurement. This floor plan and all others are for approximate representative purposes only and upon usage is agreed to as such by the client.

WWW: hdvirtualart.com | TEL: 0203.974.1567 | EMAIL: info@hdvirtualart.com

Greenwich
22 College Approach,
London SE10 9HY
02088589986
greenwichlettings@eu.jll.com

Urban living, your way.

jll.co.uk/residential

© 2019 Jones Lang LaSalle IP, Inc. All rights reserved. All information contained herein is from sources deemed reliable; however, no representation or warranty is made to the accuracy thereof.

