

## Grace Allen Court, London E2

Guide price £675,000 Leasehold









## Description

This spacious 2 bedroom apartment is situated on the 5th floor and offers approximately 785 sq ft of accommodation and comprises 2 double bedrooms, two contemporary bathrooms, reception with open plan fitted kitchen and integrated Siemens appliances, large balcony which you can access from the reception and bedroom 2 and excellent storage space.

The development boasts an excellent location, next to Hackney City farm and Haggerston Park and close to London Fields. Mettle and Poise is also well connected for the City and is a short walk (0.4 miles) from Hoxton Overground station.

Early viewings are highly recommended.

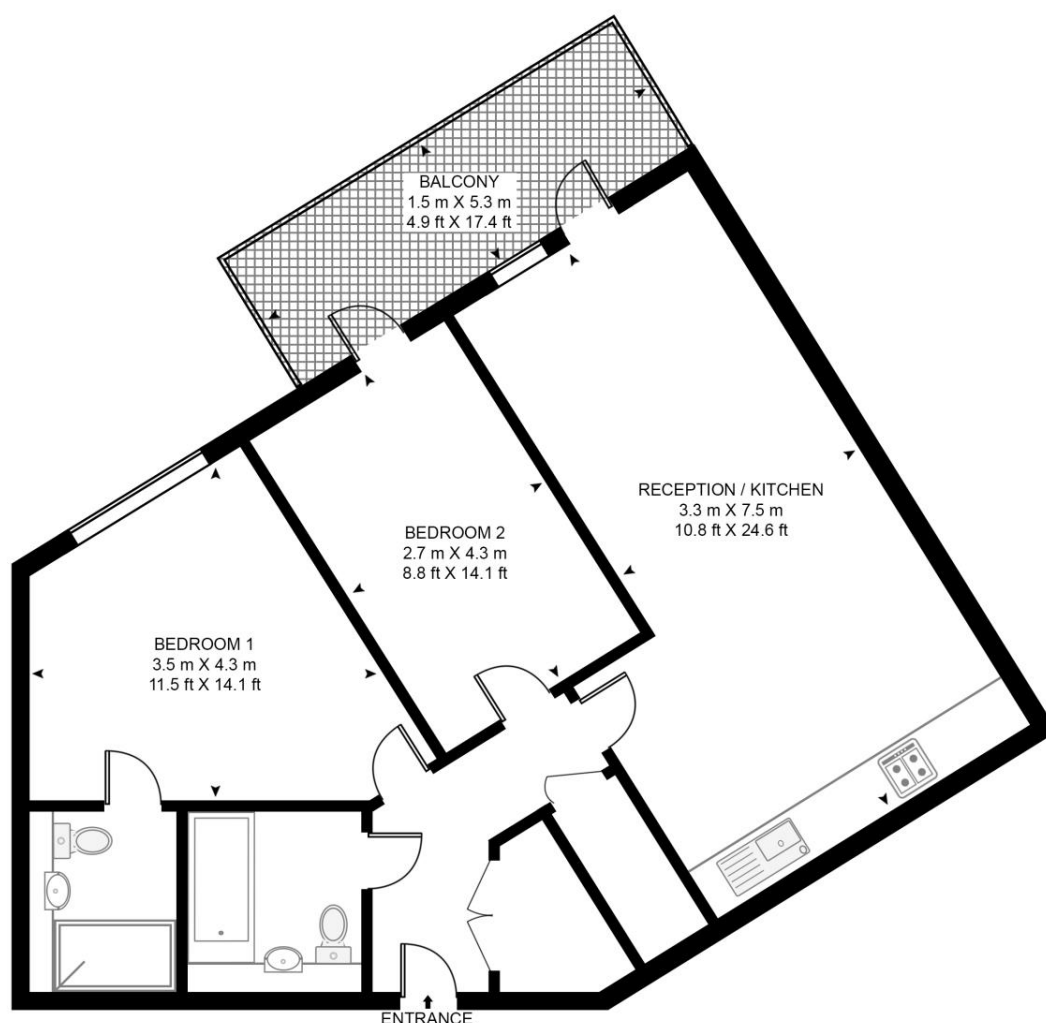
- 2 Bedrooms
- 2 Bathrooms
- Balcony
- Open plan fitted kitchen and integrated Siemens appliances
- 0.4 mile from Hoxton Overground station
- Approx. 785 sq ft (72.9.9 sq m)
- EPC: B

# Floorplan

785 sq ft | 73 sq m

## GRACE ALLEN COURT, 16 GOLDSMITHS ROW

APPROXIMATE GROSS INTERNAL FLOOR AREA 785 SQ.FT (72.9 SQ.M)



FIFTH FLOOR

**HDVA**

This floor plan has been defined by the RICS Code of Measurement. This floor plan and all others are for approximate representative purposes only and upon usage is agreed to as such by the client.

WWW: [hdvirtualart.com](http://hdvirtualart.com) | TEL: 0203.974.1567 | EMAIL: [info@hdvirtualart.com](mailto:info@hdvirtualart.com)

City  
25 Walbrook The Walbrook  
Building,  
London EC4N 8AF  
020 7337 4000

*Urban living, your way.*

[jll.co.uk/residential](http://jll.co.uk/residential)

© 2019 Jones Lang LaSalle IP, Inc. All rights reserved. All information contained herein is from sources deemed reliable; however, no representation or warranty is made to the accuracy thereof.

