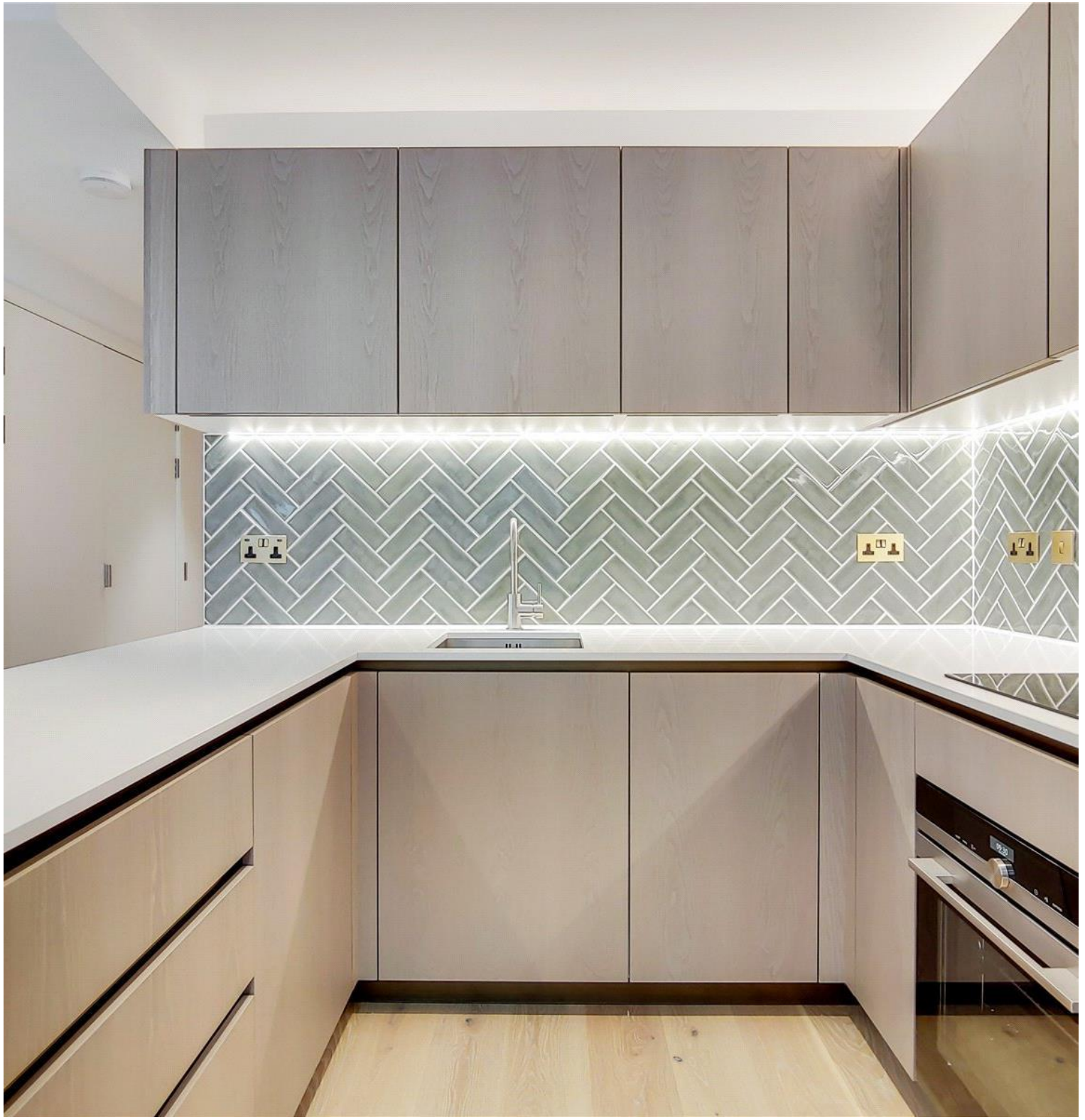


## City Road, London EC1V

Price £425 per week - Furnished







## Description

A well-presented 1 bedroom apartment in the Atlas Building, Old Street. EC1

This contemporary 1 bedroom apartment comprises a large open plan reception with fully fitted kitchen, large North facing balcony, bedroom with large fitted wardrobe, luxury bathroom with Porcelain finish and solid wood flooring throughout.

The development offers top of the range amenities which includes pool, spa, gymnasium, private cinema room, resident's only business lounge and 24 hour concierge.

Each apartment also benefits from comfort cooling / heating. The Atlas Building is next to Old Street station (0.1 mile) and a short walk to the City, Hoxton, Shoreditch and Angel.

We understand that cooling / heating is delivered via a communal system for which separate charges apply.

- 1 Bedroom
- 1 Bathroom
- Private balcony
- On-site leisure facilities including pool, spa and cinema
- 24 hour concierge
- 0.1 miles from Old Street Station
- Approx. 504 sq ft (46.9 sq m)
- Furnished
- EPC: B

# Floorplan

504 sq ft | 47 sq m

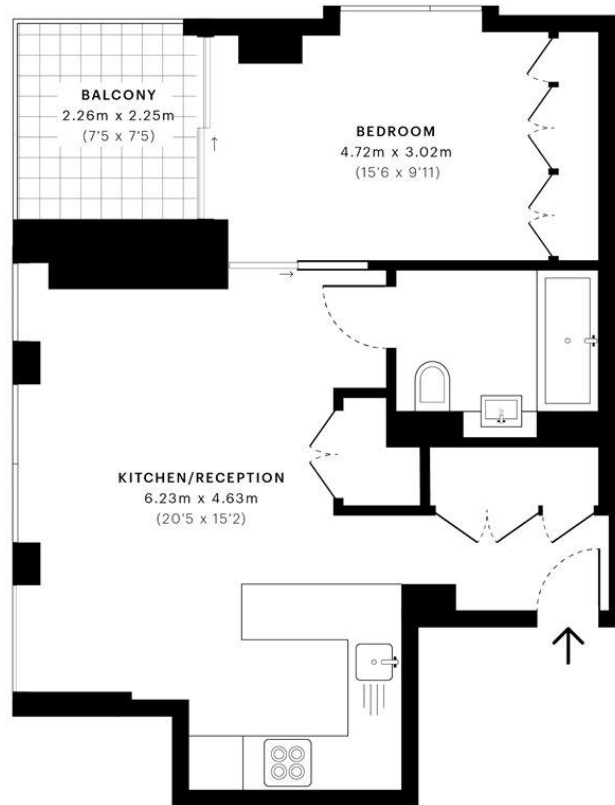


City Road, EC1V

CAPTURE DATE  
10/10/2019

LASER SCAN POINTS  
23,142,751


GROSS INTERNAL AREA  
48.1 Sqm / 517.9 Sqft



— Third Floor

 GROSS INTERNAL AREA  
The footprint of the property  
48.1 Sqm / 517.9 Sqft

 NET AREA (INTERNAL)  
Excludes walls and external features  
46.9 Sqm / 504.4 Sqft

 EXTERNAL STRUCTURAL FEATURES  
Balconies, terraces, verandas etc.  
5.1 Sqm / 54.6 Sqft

 RESTRICTED HEAD HEIGHT  
Limited use area under 1.5m  
0.0 Sqm / 0.0 Sqft



Spec floor plans are produced in accordance with the Royal Institution of Chartered Surveyors' Property Measurement Standards. Plots and gardens are illustrative only and are excluded from all area calculations. Due to rounding, numbers may not add up precisely. All measurements shown for the individual room lengths and widths are the maximum points of measurements captured in the scan.

IPMS 3B RESIDENTIAL  
53.2 Sqm / 572.6 Sqft

IPMS 3C RESIDENTIAL  
51.9 Sqm / 559.0 Sqft

SPEC ID  
5d9c743130921809f7037ff4

City  
25 Walbrook The Walbrook  
Building,  
London EC4N 8AF  
020 7337 4000

*Urban living, your way.*

[jll.co.uk/residential](http://jll.co.uk/residential)

© 2019 Jones Lang LaSalle IP, Inc. All rights reserved. All information contained herein is from sources deemed reliable; however, no representation or warranty is made to the accuracy thereof.

