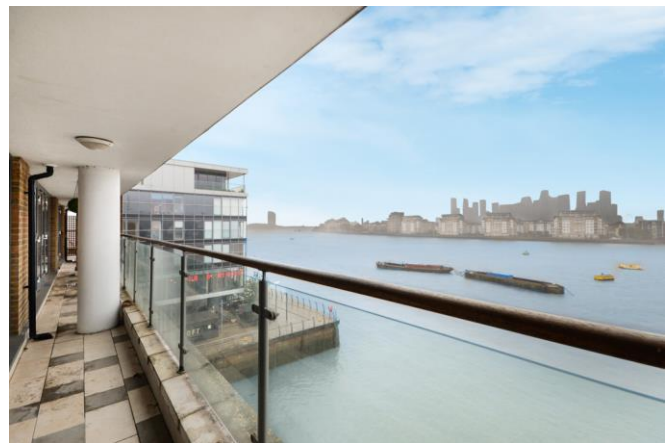




**WOOD WHARF,
GREENWICH SE10**





With its prime river facing position, this fantastic apartment must be viewed to be fully appreciated.

Offered chain free and presented in excellent order throughout we believe this property would appeal to the city professional or a local person looking to downsize. The property is finished in neutral tones throughout and has all the modern-day fittings you would expect.

This property offers a lifestyle right on your doorstep as Greenwich centre with all its attractions are just a stroll away.

Early viewings are highly recommended.

- 2 Bedrooms
- 2 Bathrooms
- 3rd Floor modern apartment
- Balcony
- Stunning river views
- Close to transport links
- No onward chain
- EPC: B

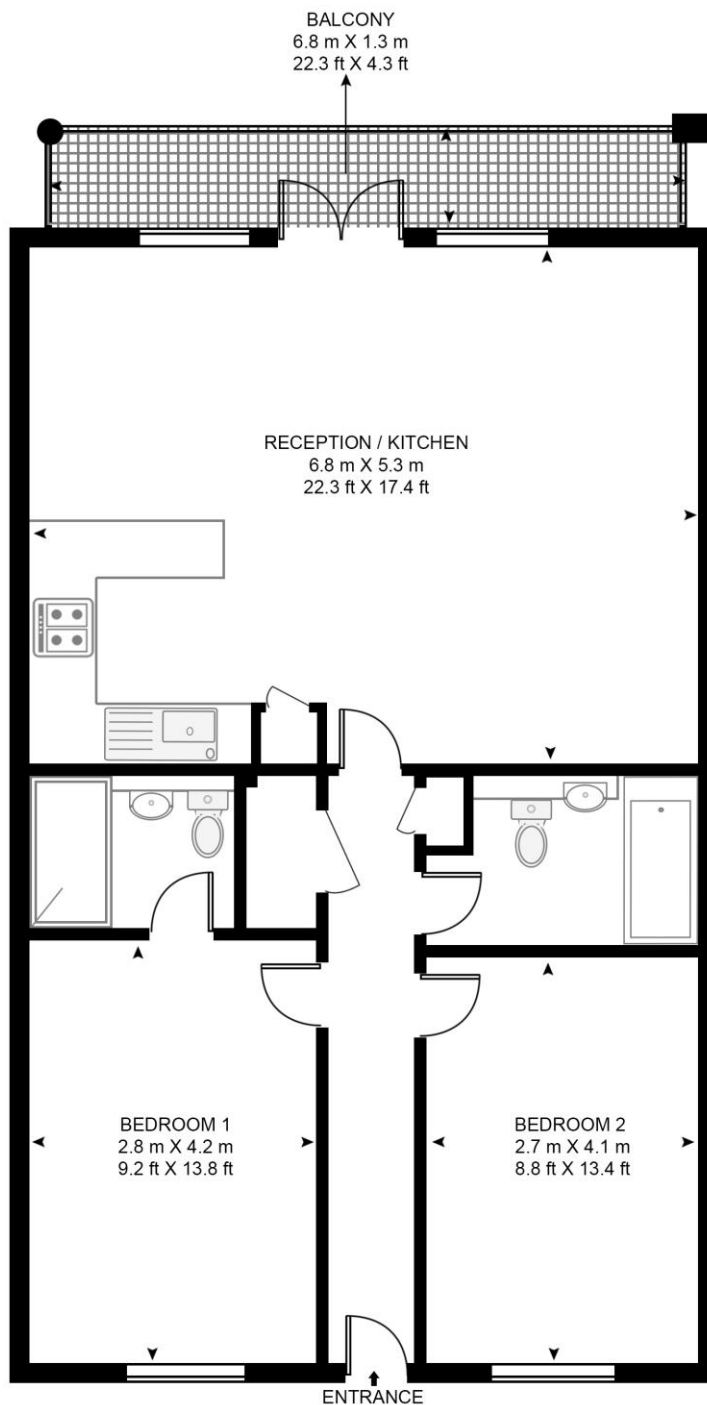
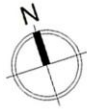
PRICE
£685,000

GROSS INTERNAL AREA
826 sq ft (76.7 sq m)

LOCAL AUTHORITY
Royal Borough of Greenwich

WOOD WHARF, HORSEFERRY PLACE

APPROXIMATE GROSS INTERNAL FLOOR AREA 826 SQ.FT (76.7 SQ.M)



THIRD FLOOR

HDVA

This floor plan has been defined by the RICS Code of Measurement. This floor plan and all others are for approximate representative purposes only and upon usage is agreed to as such by the client.

WWW: hdvirtualart.com | TEL: 0203.974.1567 | EMAIL: info@hdvirtualart.com

22 College Approach
Greenwich
London
SE10 9HY

These particulars are for general information only and do not constitute any part of an offer or contract. All statements contained therein are made without responsibility on the part of the vendors or lessors and are not to be relied upon as statement or representation of fact. Intending purchasers or lessees must satisfy themselves, by inspection, or otherwise, as to the correctness of each of the statements or dimensions contained in these particulars..