



## Gillingham Row, London SW1V

Price £525 per week - Furnished, Unfurnished







# Description

A well presented house in this modern development close to Victoria. The property consists of master bedroom with en suite shower room, second double bedroom, family bathroom, guest cloakroom, a large reception room, study and a fully fitted kitchen/breakfast room. The house is furnished in a contemporary style with neutral colours and wooden flooring in the reception room. Gillingham Row is in an excellent location with Victoria station and surrounding shops and restaurants within easy walking distance. Please note that the pictures shown may differ slightly from the actual apartment.

As well as paying the rent, you may also be required to make permitted payments. Please visit [jll.co.uk/fees](http://jll.co.uk/fees) for details of fees which may be payable when renting a property. If your tenancy does not qualify as an AST, additional fees may apply.

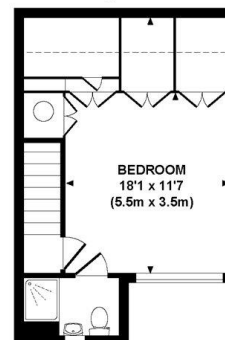
- 2 Double bedrooms
- 1 Bathroom
- 1 Shower room (en suite)
- Guest cloakroom
- Reception room
- Kitchen/dining room
- Study
- Approx. 991 sq ft (92 sq m)
- Furnished
- EPC: C



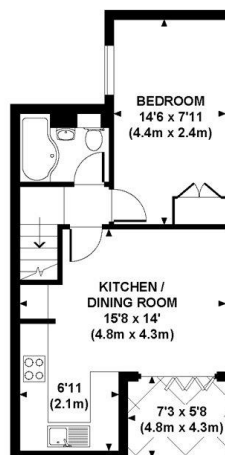
# Floorplan

991 sq ft | 92 sq m

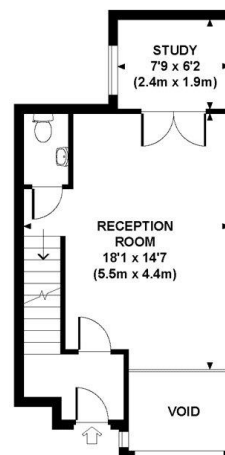
Approx. gross internal area 955 Sq Ft. / 89 Sq M.  
Approx. gross internal area 991 Sq Ft. / 92 Sq M. Inc. Restricted Height



FIRST FLOOR



LOWER GROUND FLOOR



GROUND FLOOR



Every attempt has been made to ensure the accuracy of this floor plan however, measurements are approximate and for indication purposes only. Not to scale. Photography, floor plans & brochures.  
© 2011 Dowling Jones Design Ltd. www.dowlingjonesdesign.com 020 7610 9933 / 07793 974 209

Westminster  
31 Palmer Street,  
Westminster SW1H 0NP  
020 7306 1630  
westminster@eu.jll.com

*Urban living, your way.*

[jll.co.uk/residential](http://jll.co.uk/residential)

© 2019 Jones Lang LaSalle IP, Inc. All rights reserved. All information contained herein is from sources deemed reliable; however, no representation or warranty is made to the accuracy thereof.

