



Bury Street, London SW1Y

Price £2,000 per week - Furnished



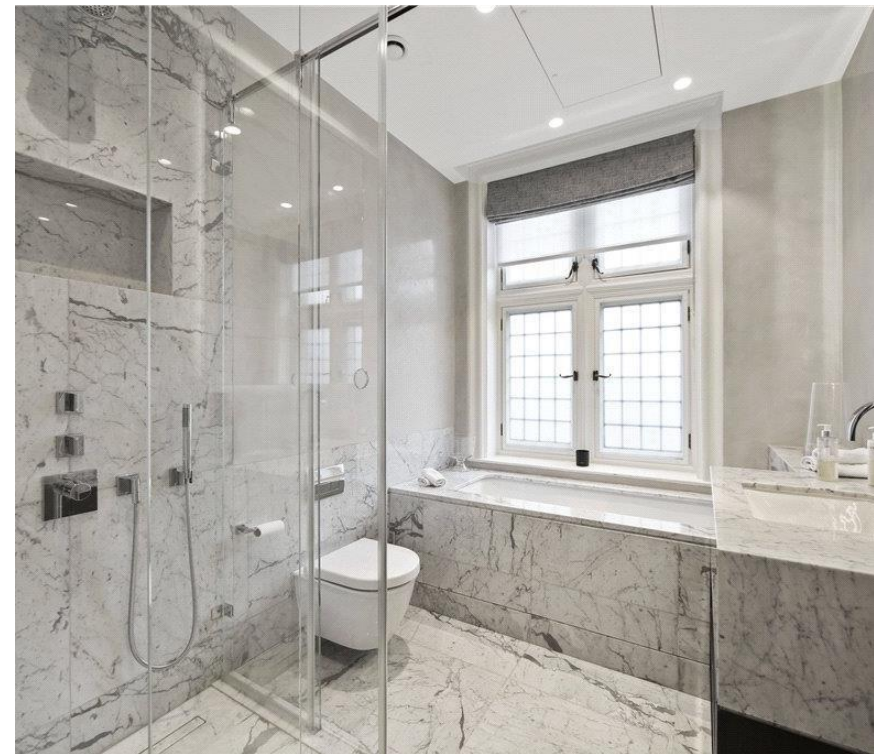


Description

A luxury apartment on the second floor of this exclusive development launched by The Crown Estate in the heart of St James's. The property comprises master bedroom with dressing room and en suite bathroom, second double bedroom with en suite shower room, third bedroom/study, reception room and a fully fitted kitchen/dining room. The flat is presented in excellent order and further benefits from wooden flooring in the reception room, underfloor heating, comfort cooling and a terrace. For one of London's most central locations, St James's is remarkably peaceful with wide uncrowded pavements and expanses of green space. The neighbourhood is bordered by Royal Parks, Green Park to the west and tranquil St James's Park to the south.

As well as paying the rent, you may also be required to make any applicable permitted payments. If your tenancy does not qualify as an AST, additional fees may apply. Please visit jll.co.uk/fees for details of fees which may be payable when renting a property.

- 3 Bedrooms
- 1 Bathroom (en suite)
- 1 Shower room
- Reception room
- Kitchen/dining room
- Second floor
- Lift
- Terrace
- Approx. 1,489 sq ft (138 sq m)
- Furnished

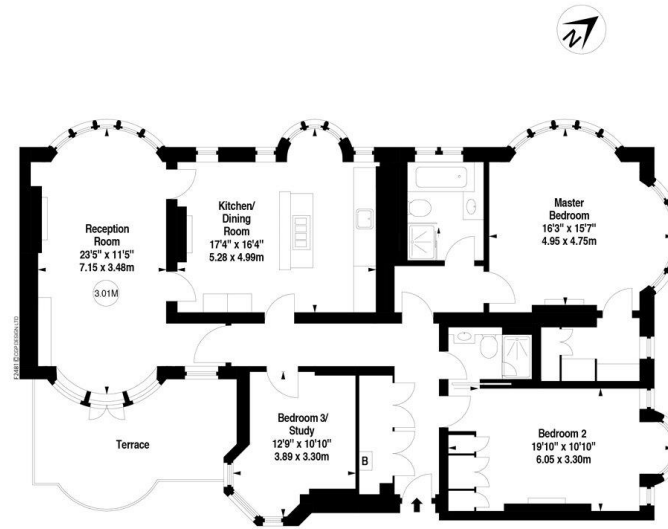


Floorplan

1,489 sq ft | 138 sq m

APPROX. GROSS INTERNAL AREA
1489 Ft² - 138.33 M²

This floorplan is for GUIDANCE ONLY and NOT FOR VALUATION purposes.



SECOND FLOOR



© CGP Design Ltd.
Measurements and features shown are approximate and for illustrative purposes only.
Whilst we don't doubt the accuracy of this floor plan, no responsibility is taken for any error or omission.
If there is any aspect of particular importance, you should carry out or commission your own inspection of the property.

Mayfair and Marylebone
JLL, 30 Warwick Street,
London W1B 5NH

Urban living, your way.

jll.co.uk/residential

© 2019 Jones Lang LaSalle IP, Inc. All rights reserved. All information contained herein is from sources deemed reliable; however, no representation or warranty is made to the accuracy thereof.

