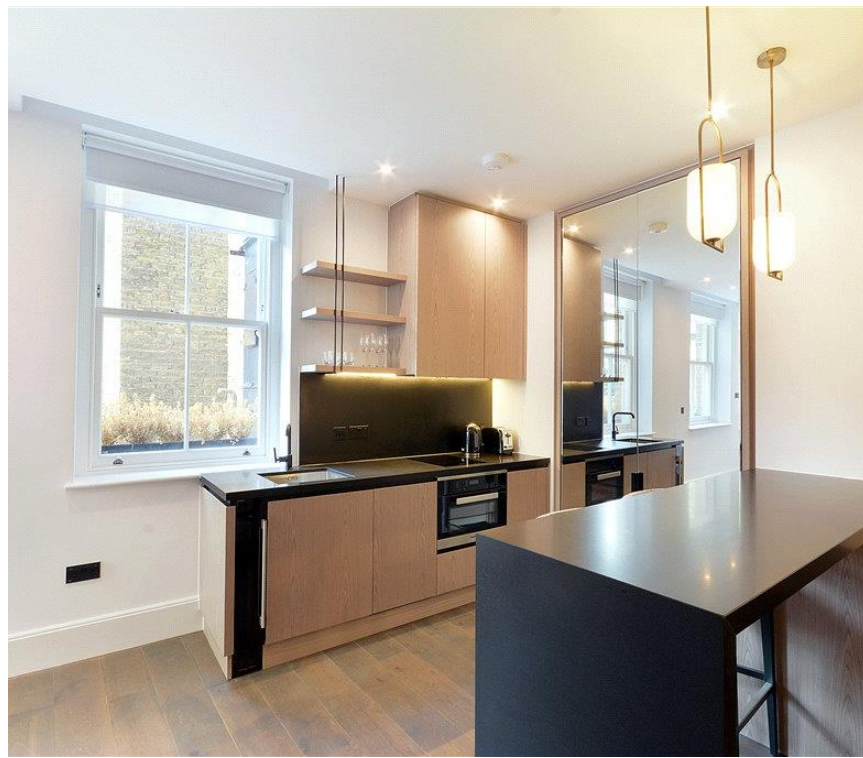
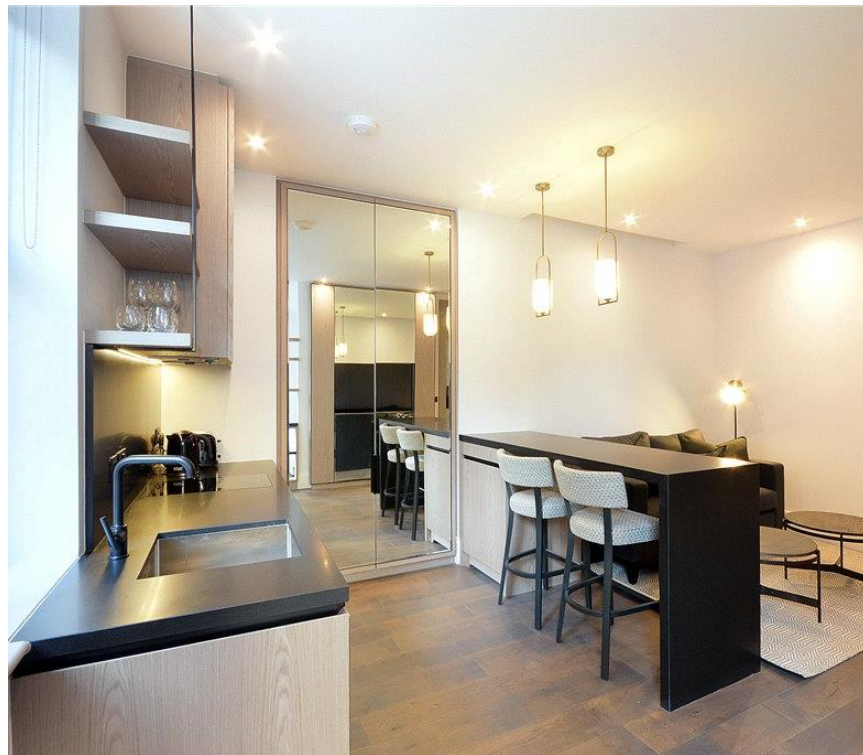




Cresswell Gardens, London SW5

Price £450 per week - Furnished



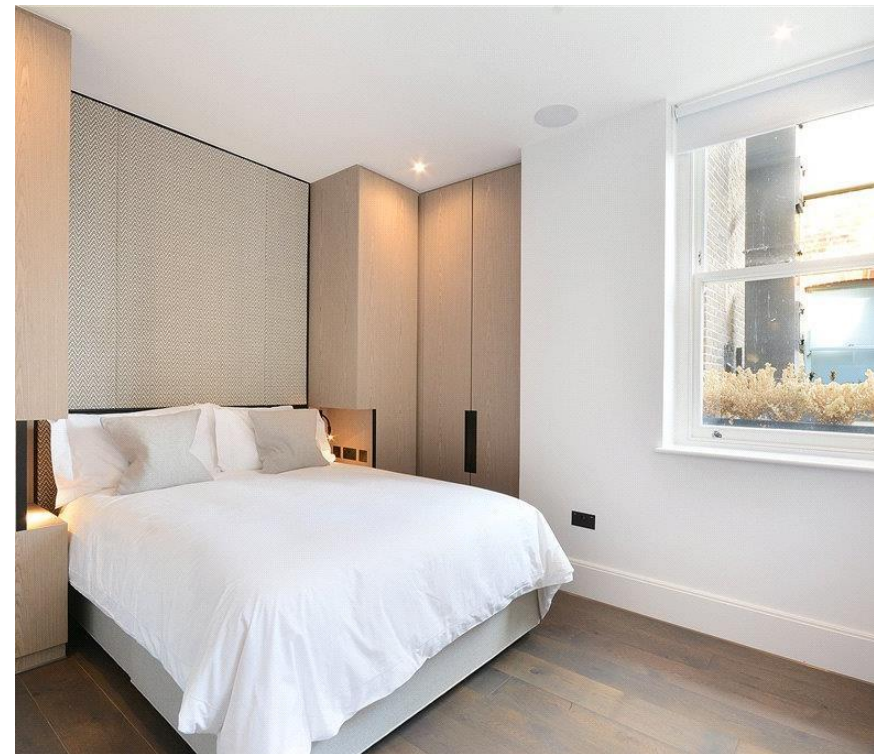
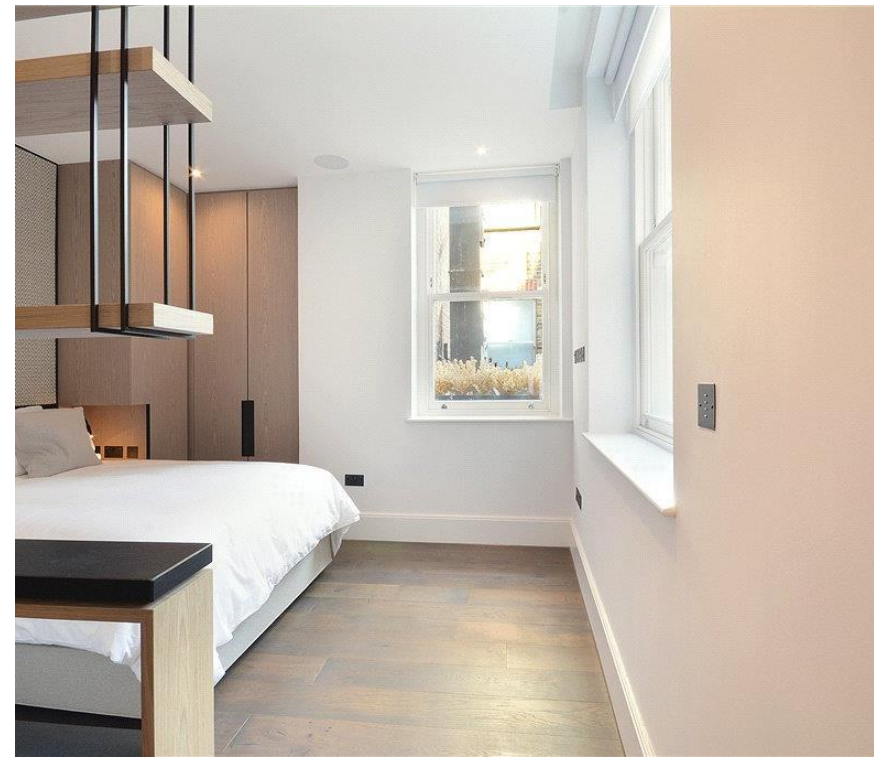


Description

A beautifully presented first floor apartment, interior designed throughout by TH2 Designs. Accommodation comprises reception room and bedroom area, one shower room and open plan kitchen, fully fitted with Miele and Neff appliances. The apartment also benefits from comfort cooling and heating in the reception room and underfloor heating to shower room and hallway. One Brompton is a stunning new development benefitting from a full concierge service, a lift to all floors, CCTV security system and audio visual entry system. The Old Brompton Road is ideally situated for the fashionable shops and restaurants of both Knightsbridge and Chelsea, as well as transport links across central London.

As well as paying the rent, you may also be required to make permitted payments. Please visit jll.co.uk/fees for details of fees which may be payable when renting a property. If your tenancy does not qualify as an AST, additional fees may apply.

- Reception room/bedroom area
- Open plan kitchen
- Separate shower room
- First floor
- Lift
- Concierge service
- Interior designed throughout by TH2 Designs
- Furnished
- Approx. 387 sq ft (35 sq m)
- EPC: C

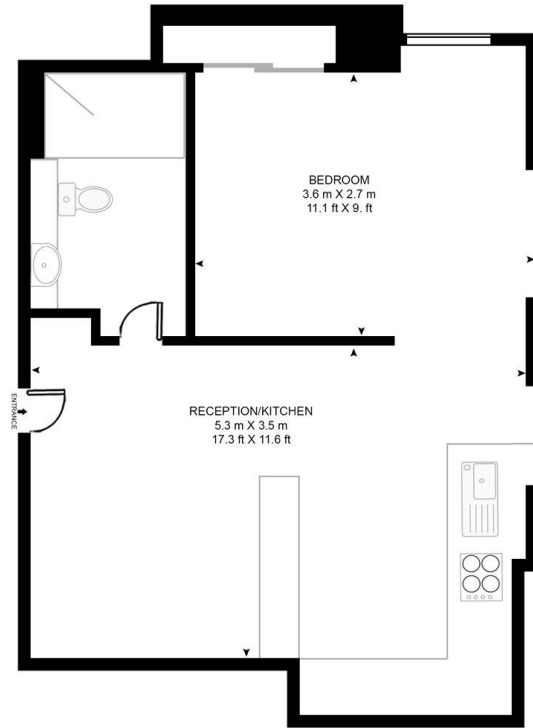


Floorplan

387 sq ft | 36 sq m

CRESSWELL GARDENS

APPROXIMATE GROSS INTERNAL FLOOR AREA 387 SQ.FT (35.9 SQ.M)



FIRST FLOOR

HDVA

This floor plan has been defined by the RICS Code of Measurement. This floor plan and all others are for approximate representative purposes only and upon usage is agreed to as such by the client.
WWW: hdvirtualart.com | TEL: 0203.974.1567 | EMAIL: info@hdvirtualart.com

Chelsea
2 Cale Street,
London SW3 3QU
020 7399 5010
chelsealettings@eu.jll.com

Urban living, your way.

jll.co.uk/residential

© 2019 Jones Lang LaSalle IP, Inc. All rights reserved. All information contained herein is from sources deemed reliable; however, no representation or warranty is made to the accuracy thereof.

