

PRINCES HOUSE, KINGSWAY,
LONDON WC2B





A superb sixth floor apartment (with lift) in this landmark development moments from Covent Garden.

The property consists of two double bedrooms, one shower room, guest cloakroom, reception room and a fully fitted, open plan kitchen. The flat is presented in excellent order and further benefits include underfloor heating, air conditioning and concierge.

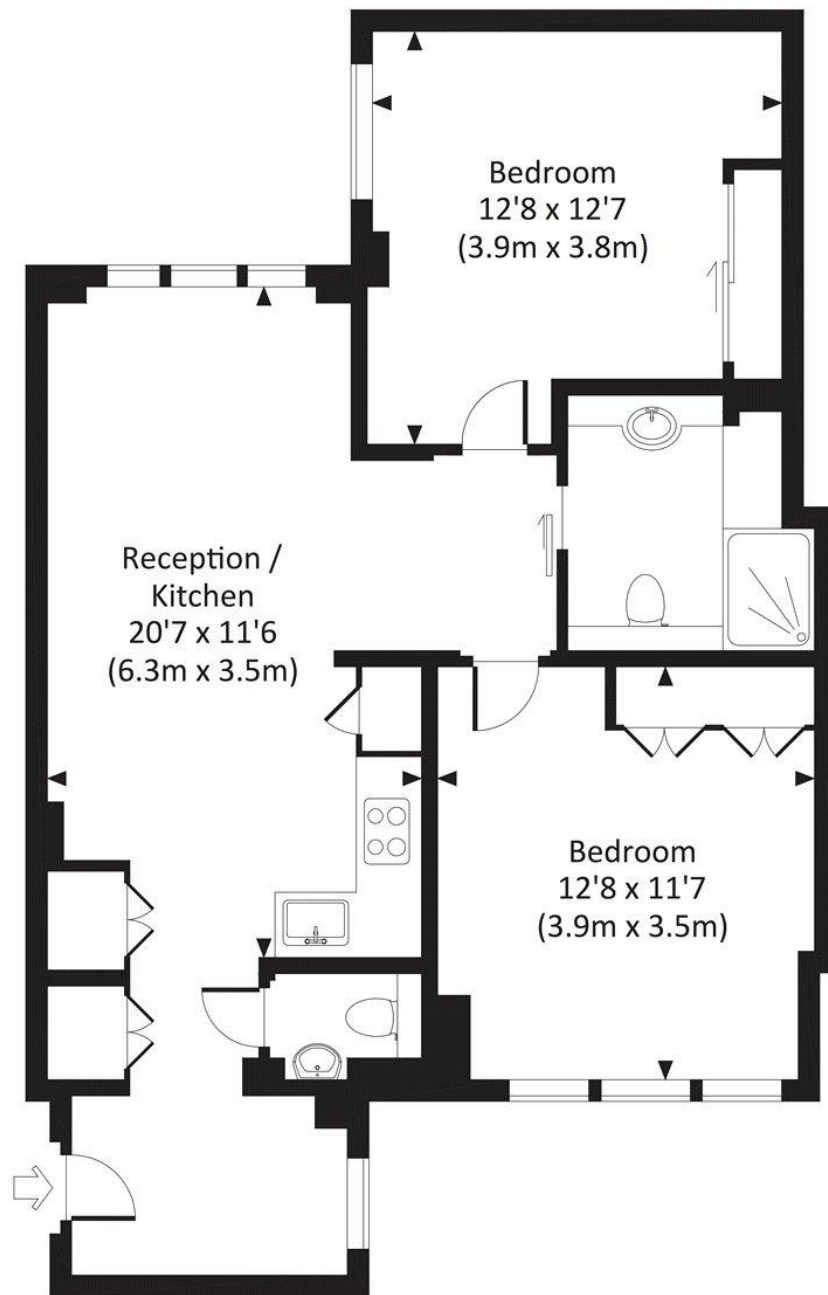
There is a total of 20 residential flats in this Neoclassical Kingsway property. Located just 0.1 miles from Aldwych, the theatre district, there are a plethora of theatres, restaurants, churches and historic buildings to see and visit. Further dining and retail opportunities can be found in the Notorious Covent Garden 0.3 miles and the wider West End.

- 2 Bedrooms
- 1 Bathroom + WC
- 6th Floor modern apartment
- Open-plan kitchen
- Concierge
- 0.2 miles from Holborn station
- Leasehold
- No onward chain
- EPC: C

PRICE
POA

GROSS INTERNAL AREA
714 sq ft (66.3 sq m)

Approx. gross internal area
714 Sq.Ft. / 66.3 Sq.M.



SIXTH FLOOR



All measurements have been made in accordance with RICS Code of Measuring Practice which are approximate only and only for illustrative purposes. For the avoidance of doubt, Dowling Jones Design shall not be liable for any reliance on these measurements. © 2017 www.dowlingjones.com 020 7610 9933

The Walbrook Building
25 Walbrook
London
EC4N 8AF

These particulars are for general information only and do not constitute any part of an offer or contract. All statements contained therein are made without responsibility on the part of the vendors or lessors and are not to be relied upon as statement or representation of fact. Intending purchasers or lessees must satisfy themselves, by inspection, or otherwise, as to the correctness of each of the statements or dimensions contained in these particulars..