

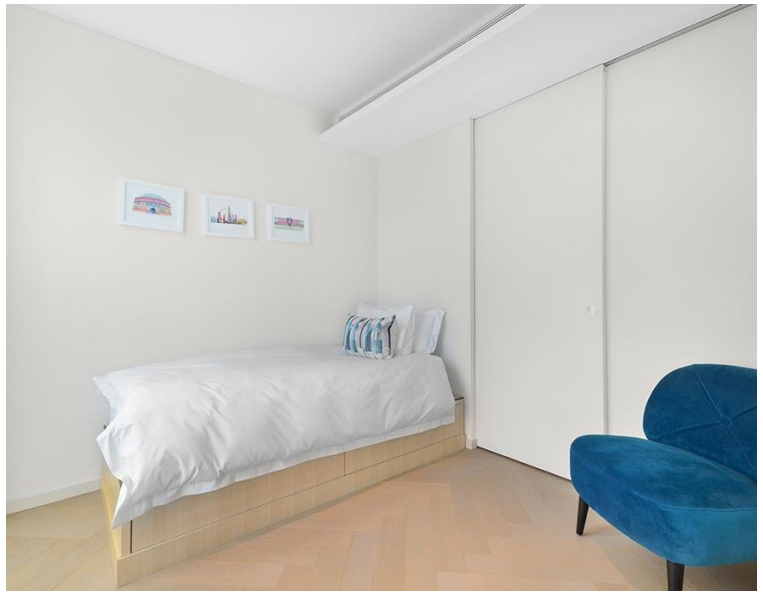


## Upper Ground, London SE1

Price £1,150 per week - Furnished







## Description

A truly spectacular 2 / 3 bedroom premier apartment at Southbank Tower, SE1.

Situated on the 25th floor, this large 2 / 3 bedroom apartment boasts approximately 1401 sq ft of internal living space and has truly stunning views over South London and towards the London Eye and Houses of Parliament. The apartment is comprised of two double bedrooms each with large fitted wardrobes, additional study room but can also be used as a guest bedroom, two luxurious bathrooms, spacious reception area with fully fitted open plan contemporary kitchen, wood flooring and plenty of storage space.

Southbank Tower is ideally situated on the Southbank of the Thames and is conveniently located for the City (0.5 miles from Blackfriars), and within easy reach of Waterloo (0.4 miles) and Southwark Station (0.4 miles).

Other benefits include luxury spa, gym and pool, resident's cinema and 24 hour concierge.

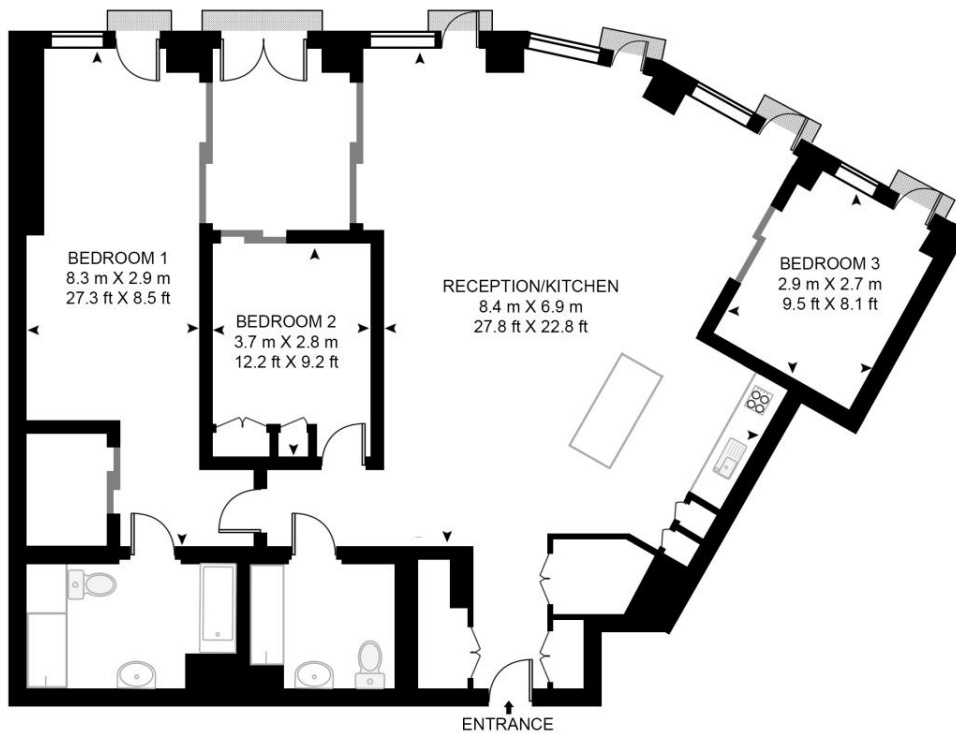
- ZERO DEPOSIT AVAILABLE!
- 2/3 Bedrooms
- 2 Bathrooms
- 25th floor
- Open-plan kitchen
- On-site leisure facilities including swimming pool, spa, gym and cinema
- 24 hour concierge
- 0.4 miles from Southwark Station
- Approx. 1401 sq ft (130.2 sq m)
- Furnished

# Floorplan

1,401 sq ft | 130 sq m

**SOUTHBANK TOWER, 55 UPPER GROUND, LONDON, SE1 9RB**

APPROXIMATE GROSS INTERNAL FLOOR AREA 1401 SQ.FT (130.2 SQ.M)



TWENTY FIFTH FLOOR

**HDVA**

This floor plan has been defined by the RICS Code of Measurement. This floor plan and all others are for approximate representative purposes only and upon usage is agreed to as such by the client.

WWW: [hdvirtualart.com](http://hdvirtualart.com) | TEL: 0203.974.1567 | EMAIL: [info@hdvirtualart.com](mailto:info@hdvirtualart.com)

City  
25 Walbrook The Walbrook  
Building,  
London EC4N 8AF  
020 7337 4000

*Urban living, your way.*

[jll.co.uk/residential](http://jll.co.uk/residential)

© 2019 Jones Lang LaSalle IP, Inc. All rights reserved. All information contained herein is from sources deemed reliable; however, no representation or warranty is made to the accuracy thereof.

