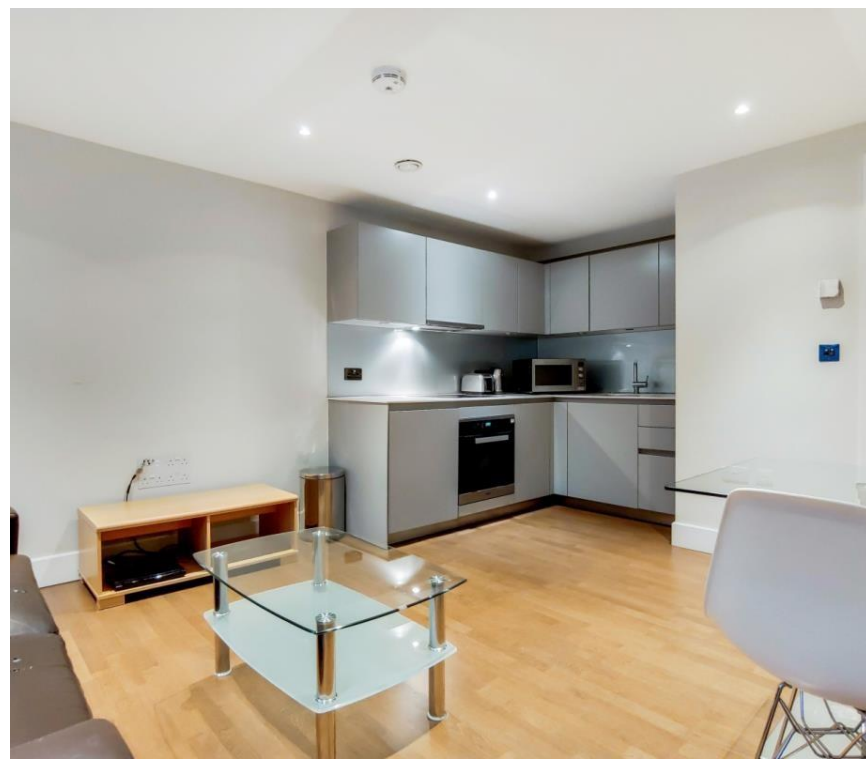




Whitechapel High Street, London E1

OIEO £450,000 Leasehold



Description

This luxury one bedroom apartment is on the 12th floor. It comprises bedroom with fitted wardrobes, fitted kitchen with Siemens appliances, contemporary bathroom and wood flooring throughout.

The development is located approximately 0.1 miles from Aldgate East underground station, in Zone 1 and also benefits from 24 hour concierge.

Early viewings are highly recommended.

- 1 Bedroom
- 1 Bathroom
- 12th Floor modern apartment
- 24 Hour concierge
- 0.1 miles from Aldgate East Station
- No onward chain
- EPC: B



Floorplan

366 sq ft | 34 sq m

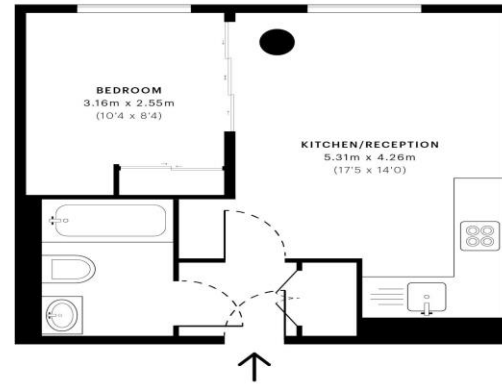


Crawford Building, E1

CAPTURE DATE 14/01/2021 LASER SCAN POINTS 890,948

GROSS INTERNAL AREA

34.00 sqm / 365.97 sqft



— Twentieth Floor

GROSS INTERNAL AREA (GIA)
The footprint of the property
34.00 sqm / 365.97 sqft

NET INTERNAL AREA (NIA)
Excludes walls and external features
Includes circulation, stairs and fixed height
32.25 sqm / 347.14 sqft

EXTERNAL STRUCTURAL FEATURES
Balconies, terraces, verandahs
0.00 sqm / 0.00 sqft

RESTRICTED HEAD HEIGHT
Limited use area under 1.5 m
0.00 sqm / 0.00 sqft



Spec Verified floor plans are produced in accordance with Royal Institution of Chartered Surveyors' Property Measurement Standards. Plans and gardens are illustrative only and excluded from all area calculations. Due to rounding, numbers may not add up precisely. All measurements shown for the individual room lengths and widths are the maximum points of measurements captured in the scan.

IPMS 2B RESIDENTIAL 34.85 sqm / 372.07 sqft
IPMS 2C RESIDENTIAL 32.91 sqm / 354.24 sqft

spec id: 58305ea07fe290dbed68f56

City
25 Walbrook The Walbrook
Building,
London EC4N 8AF
020 7337 4000

Urban living, your way.

jll.co.uk/residential

© 2019 Jones Lang LaSalle IP, Inc. All rights reserved. All information contained herein is from sources deemed reliable; however, no representation or warranty is made to the accuracy thereof.



