



Hyde Park Square, London W2

Price £575 per week - Furnished





Description

A bright and modern second floor apartment (with lift) located in the sought after building of Hyde Park Square. The property consists of master bedroom with en suite bathroom, one further double bedroom, one shower room and a spacious reception room with dining area and open plan kitchen, ideal for entertaining. Hyde Park Square is located just moments from the wonderful green open space of Hyde Park, as well as the shops, restaurants and transport links that the area has to offer.

As well as paying the rent, you may also be required to make permitted payments. Please visit jll.co.uk/fees for details of fees which may be payable when renting a property. If your tenancy does not qualify as an AST, additional fees may apply.

- Master bedroom with en suite bathroom
- Second double bedroom
- One shower room
- Reception room
- Open plan kitchen
- Access to garden square included
- Second floor
- Lift
- Furnished
- Approx. 682 sq ft (63 sq m)



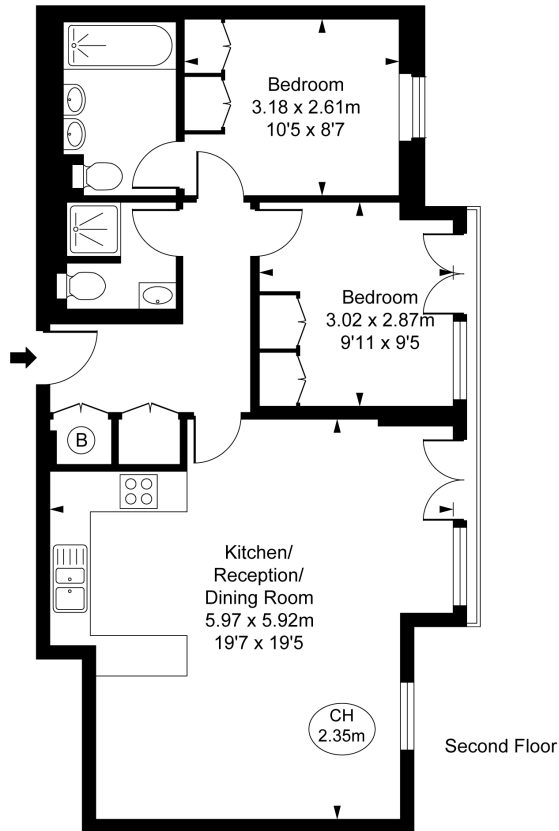
Floorplan

714 sq ft | 66 sq m

Hyde Park Square, W2

Approximate Gross Internal Area
63.38 sq m / 682 sq ft

(CH = Ceiling Heights)



This plan is not to scale. It is for guidance and not for valuation purposes.
All measurements and areas are approximate only, and have been prepared in accordance with the current edition of the RICS Code of Measuring Practice.
© Fulham Performance

Knightsbridge

174 Brompton Road,

London SW3 1HP

020 7306 1600

knightsbridge@eu.jll.com

Urban living, your way.

jll.co.uk/residential

© 2019 Jones Lang LaSalle IP, Inc. All rights reserved. All information contained herein is from sources deemed reliable; however, no representation or warranty is made to the accuracy thereof.

