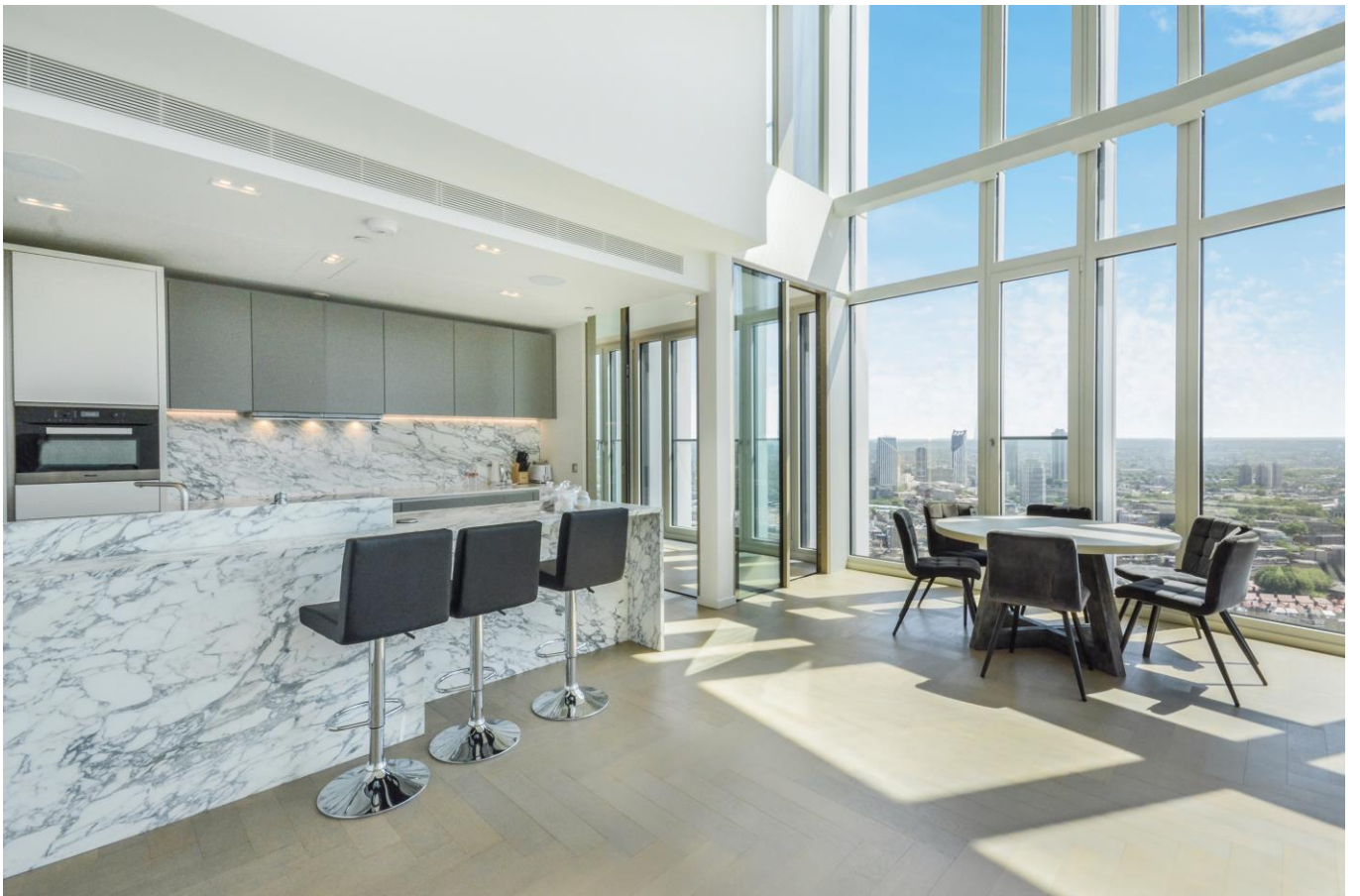




**SOUTHBANK TOWER,
LONDON SE1**





This absolutely stunning three bedroom “Black” edition premiere duplex apartment on the 34th floor in Southbank Tower, SE1.

Boasting approximately 2,360 sq ft of living space, this stunning apartment is furnished to an exceptional standard and has amazing views over South London and towards the London Eye and Houses of Parliament. The property comprises three double bedrooms each with large fitted wardrobes, spacious semi-circular reception with floor to ceiling windows, three luxury bathrooms, fully fitted open plan kitchen and winter garden.

The development benefits from a luxury spa, gym and pool, private business lounge, resident's cinema, private rooftop gardens and 24-hour concierge.

Southbank Tower is conveniently located for the City (0.5 miles from Blackfriars), and within easy reach of Waterloo (0.4 miles) and Southwark Station (0.4 miles).

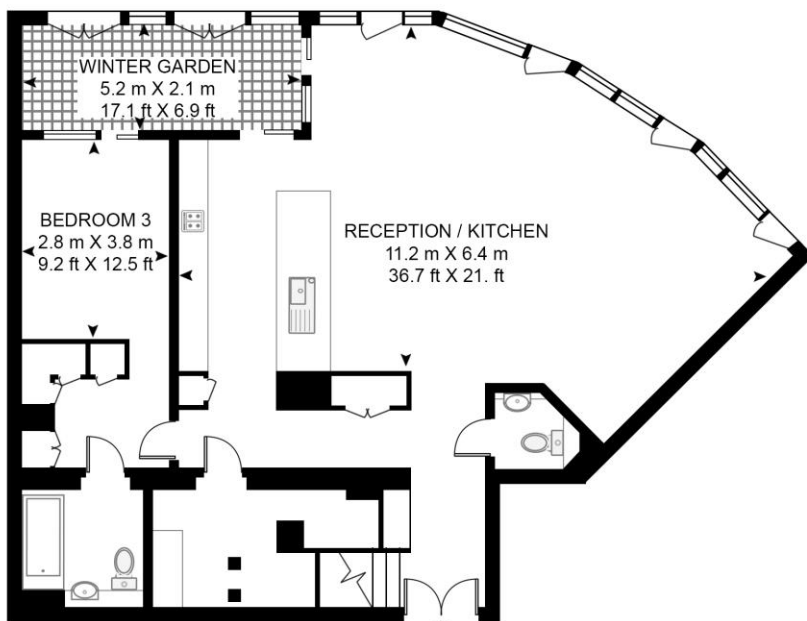
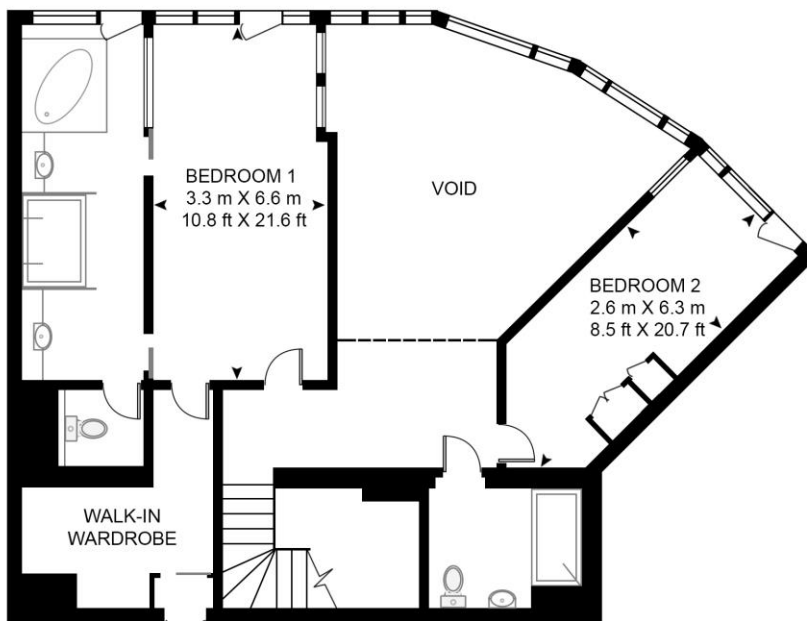
- 3 Bedrooms
- 3 Bathrooms
- Open-plan kitchen
- Stunning views over South London, London Eye and Houses of Parliament
- 24 Hour Concierge
- Residents' gym and swimming pool
- Winter garden
- 0.2 miles from Hoxton over ground Station
- Leasehold
- EPC: B

PRICE
POA

GROSS INTERNAL AREA
2,360 sq ft (219.2 sq m)

SOUTHBANK TOWER, 55 UPPER GROUND, LONDON, SE1 9RB

APPROXIMATE GROSS INTERNAL FLOOR AREA 2360 SQ.FT (219.2 SQ.M)
(INCLUDING WINTER GARDEN & EXCLUDING VOID)



THIRTY FOURTH FLOOR



This floor plan has been defined by the RICS Code of Measurement. This floor plan and all others are for approximate representative purposes only and upon usage is agreed to as such by the client.

WWW: hdvirtualart.com | TEL: 0203.974.1567 | EMAIL: info@hdvirtualart.com

The Walbrook Building
25 Walbrook
London
EC4N 8AF

These particulars are for general information only and do not constitute any part of an offer or contract. All statements contained therein are made without responsibility on the part of the vendors or lessors and are not to be relied upon as statement or representation of fact. Intending purchasers or lessees must satisfy themselves, by inspection, or otherwise, as to the correctness of each of the statements or dimensions contained in these particulars..