



Wilton Crescent, London SW1X

Price £1,265 per week - Furnished





Description

A beautiful maisonette arranged over the ground and lower ground floor of this prestigious crescent in the heart of Belgravia. The property comprises four bedrooms, two bathrooms, a double reception room and a fully fitted, eat-in kitchen. Further benefits include wooden flooring in the reception room and contemporary furnishings. Wilton Crescent is conveniently located moments from the many shopping and transport facilities of Sloane Street and Knightsbridge and the open spaces of Hyde Park.

As well as paying the rent, you may also be required to make permitted payments. Please visit jll.co.uk/fees for details of fees which may be payable when renting a property. If your tenancy does not qualify as an AST, additional fees may apply.

- 4 Double bedrooms
- 2 Bathrooms
- Double reception room
- Fully fitted kitchen
- Ground & lower ground floor
- Approx. 1,703 sq ft (158 sq m)
- Furnished
- EPC: E



Floorplan

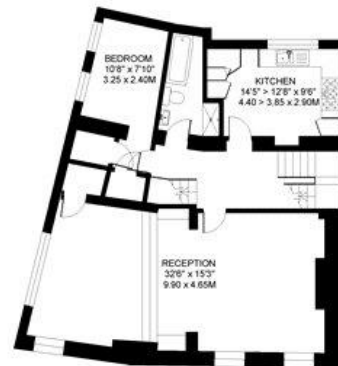
1,703 sq ft | 158 sq m

WILTON CRESCENT, KNIGHTSBRIDGE, LONDON SW1

APPROXIMATE INTERNAL (LIVING) FLOOR AREA
1698 SQ. FT. / 157.7 SQ. M.



GROUND FLOOR 700 SQ. FT.



LOWER GROUND FLOOR 998 SQ. FT.

COPYRIGHT: Floorplan produced for "Henry & James Estate Agents Ltd." by floorplanners.co.uk
This plan is not to a given scale, and is for guidance only, and must not be relied upon as a statement of fact.
All measurements are maximum, and include window bays, and wardrobes where applicable.
This plan has been prepared in accordance with the "RICS" Code of Measuring Practice.
Where a room has a sloping ceiling, the dotted line indicates height at 1.5m, and measurements are shown at floor level.

Knightsbridge
174 Brompton Road,
London SW3 1HP
020 7306 1600
knightsbridge@eu.jll.com

Urban living, your way.

jll.co.uk/residential

© 2019 Jones Lang LaSalle IP, Inc. All rights reserved. All information contained herein is from sources deemed reliable; however, no representation or warranty is made to the accuracy thereof.

