



William Mews

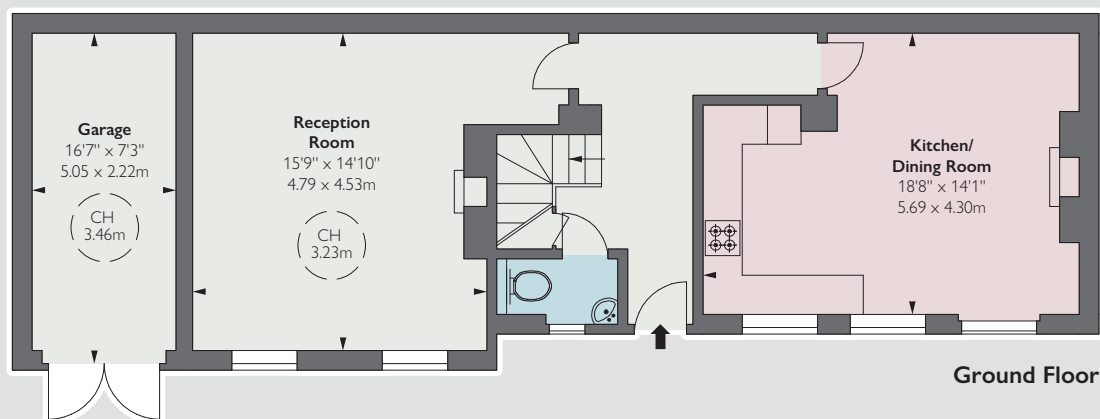
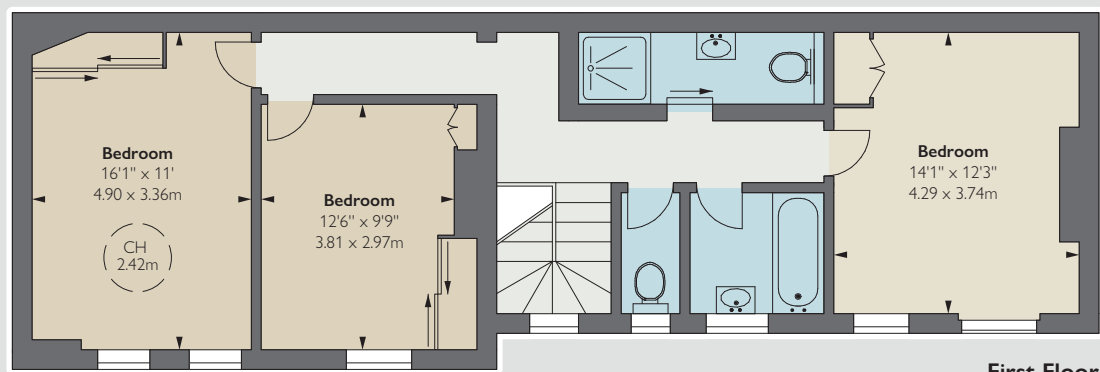
KNIGHTSBRIDGE SW1

Now requiring complete modernisation, an impressive mews house situated in this discreet and very quiet location on the border of Knightsbridge and Belgravia.

Arranged over just two floors, the house has a broad frontage onto the mews, high ceilings and an integral garage. The property is not Listed and an incoming purchaser may consider adding a mansard roof extension, or basement (subject to planning consent).

William Mews is a private mews with security and a barrier situated at the north east corner of Lowndes Square close to all the amenities of Knightsbridge, Motcomb Street and Hyde Park.

 **Approximate Gross Internal Area**
1,572 sq ft / 146.04 sq m



- 3 Bedrooms
- Shower room
- Bathroom
- 2 Cloakrooms
- Reception room
- Kitchen / Dining Room
- Garage
- EPC: D

Guide Price £2,250,000
Tenure Freehold
Mews Charge £810.88 per quarter
Local Authority City of Westminster

Floorplan for guidance only, not to scale or valuations purposes. It must not be relied upon as a statement of fact. All measurements and areas are approximate and have been prepared in accordance with the current edition of the RICS Code of Measuring Practice.

These particulars are for general information only and do not constitute any part of an offer or contract. All statements contained therein are made without responsibility on the part of the vendors or lessors and are not to be relied upon as statement or representation of fact. Intending purchasers or lessees must satisfy themselves, by inspection, or otherwise, as to the correctness of each of the statements or dimensions contained in these particulars. This floorplan is for guidance only and not for valuation purposes. 04/02/21 JLL-210202-04GG



JLL Knightsbridge
 174 Brompton Road, London SW3 1HP
 020 7306 1610

JLL Chelsea
 2 Cale Street, London SW3 3QU
 020 7399 5010

jll.co.uk/primecollection

