

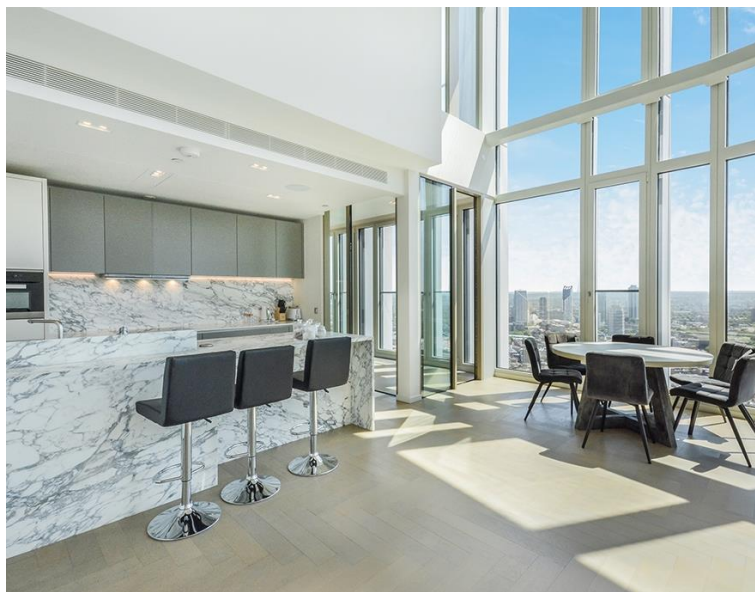


Upper Ground, London SE1

Price £2,250 per week - Furnished







Description

A rare opportunity to rent a 34th floor “Black” edition premiere duplex apartment in Southbank Tower, SE1.

Boasting approximately 2360 sq ft of living space, this stunning apartment is furnished to an exceptional standard and has stunning views over South London and towards the London Eye and Houses of Parliament. The property comprises three double bedrooms each with large fitted wardrobes, spacious semi-circular reception with floor to ceiling windows, three luxury bathrooms, fully fitted open plan kitchen and winter garden.

The development benefits from a luxury spa, gym and pool, private business lounge, resident's cinema, private rooftop gardens and 24 hour concierge. Southbank Tower is conveniently located for the City (0.5 miles from Blackfriars), and within easy reach of Waterloo (0.4 miles) and Southwark Station (0.4 miles).

- ZERO DEPOSIT AVAILABLE!
- 3 Bedroom Duplex Apartment
- 3 Bathrooms
- Open-plan kitchen
- Winter Garden
- Residents' gym & swimming pool
- 24 hour concierge
- 0.4 miles from London Waterloo East Station
- Approx. 2,360 sq ft (219.2 sq m)
- Furnished

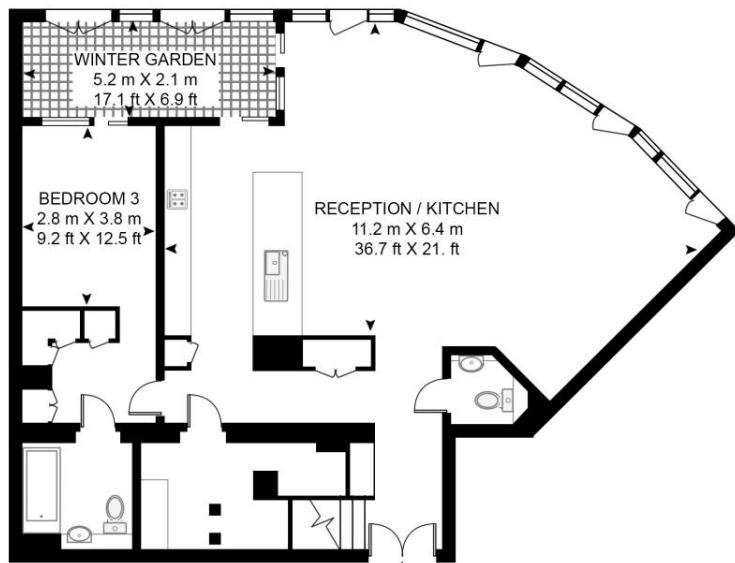
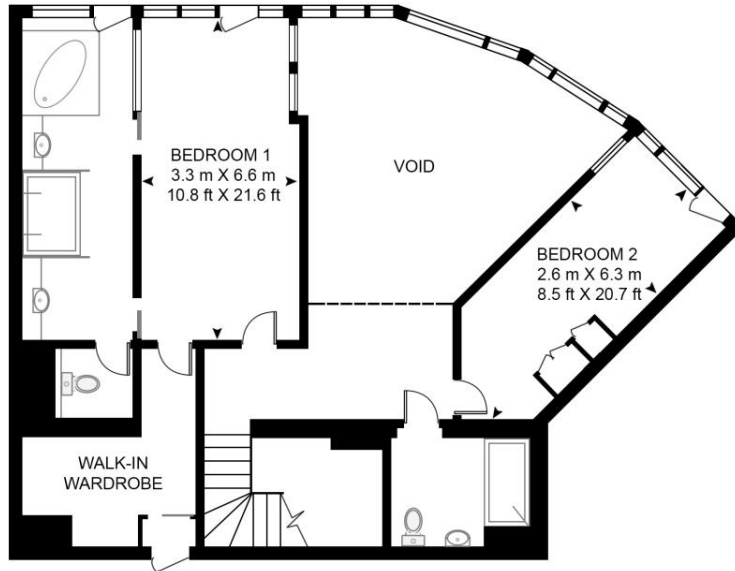
Floorplan

2,360 sq ft | 219 sq m

SOUTHBANK TOWER, 55 UPPER GROUND, LONDON, SE1 9RB

APPROXIMATE GROSS INTERNAL FLOOR AREA 2360 SQ.FT (219.2 SQ.M)

(INCLUDING WINTER GARDEN & EXCLUDING VOID)



ENTRANCE

THIRTY FOURTH FLOOR



This floor plan has been defined by the RICS Code of Measurement. This floor plan and all others are for approximate representative purposes only and upon usage is agreed to as such by the client.

WWW: hdvirtualart.com | TEL: 0203.974.1567 | EMAIL: info@hdvirtualart.com

City
25 Walbrook The Walbrook
Building,
London EC4N 8AF
020 7337 4000

Urban living, your way.

jll.co.uk/residential

© 2019 Jones Lang LaSalle IP, Inc. All rights reserved. All information contained herein is from sources deemed reliable; however, no representation or warranty is made to the accuracy thereof.

