

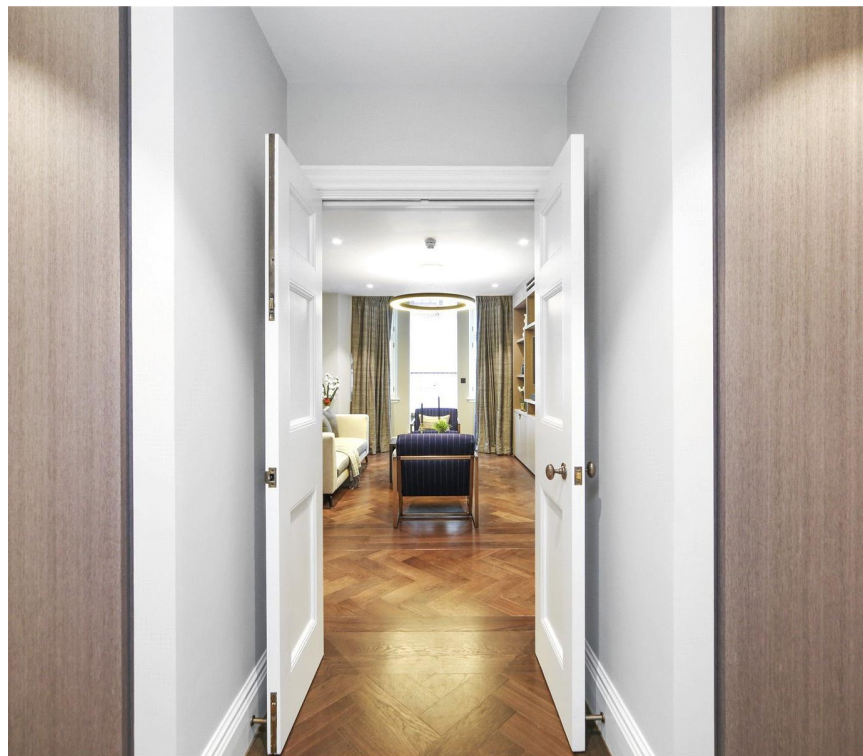


## Bury Street, London SW1Y

Price £1,050 per week - Furnished





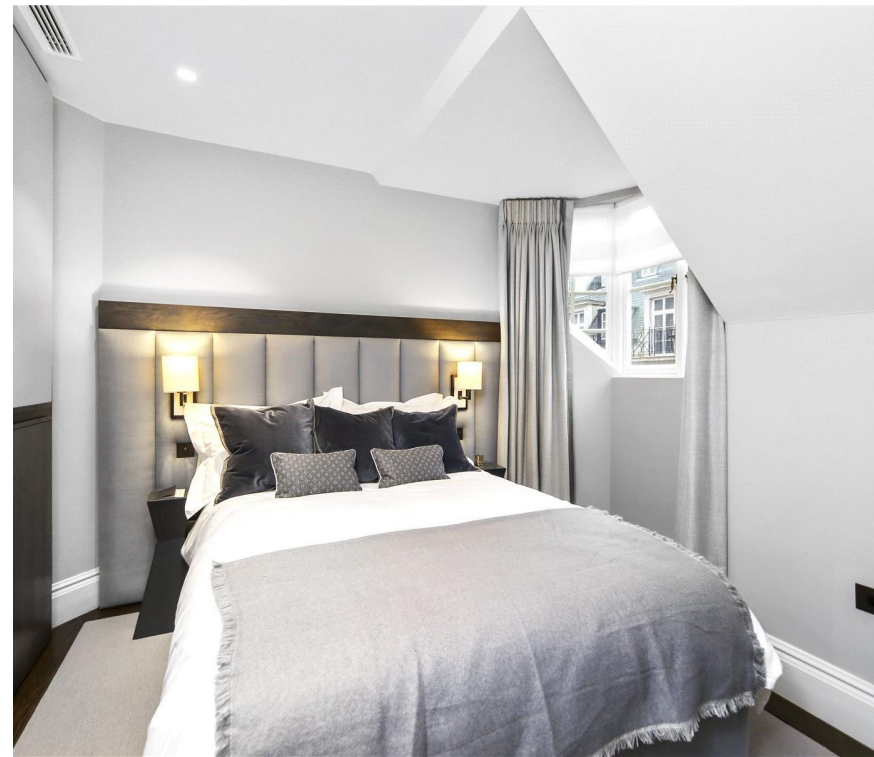


# Description

A luxury apartment on the top floor (with lift) of this exclusive development launched by The Crown Estate in the heart of St James's. The property comprises two double bedrooms, one bathroom, reception room and a fully fitted kitchen/dining room. The flat is presented in excellent order and further benefits from wooden flooring in the reception room, underfloor heating, comfort cooling and a terrace. For one of London's most central locations, St James's is remarkably peaceful with wide uncrowded pavements and expanses of green space. The neighbourhood is bordered by Royal Parks, Green Park to the west and tranquil St James's Park to the south.

As well as paying the rent, you may also be required to make any applicable permitted payments. If your tenancy does not qualify as an AST, additional fees may apply. Please visit [jll.co.uk/fees](http://jll.co.uk/fees) for details of fees which may be payable when renting a property.

- 2 Double bedrooms
- 1 Bathroom
- Reception room
- Kitchen/dining room
- Fourth floor
- Lift
- Terrace
- Approx. 816 sq ft (75 sq m)
- Furnished
- EPC: C



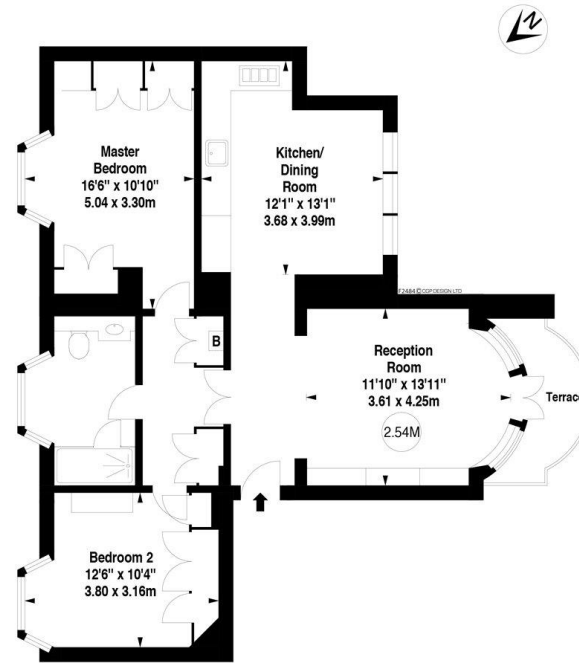


# Floorplan

816 sq ft | 76 sq m

APPROX. GROSS INTERNAL AREA  
816 Ft<sup>2</sup> - 75.81 M<sup>2</sup>

This floorplan is for GUIDANCE ONLY and NOT FOR VALUATION purposes.



FOURTH FLOOR



© CGP Design Ltd.  
Measurements and features shown are approximate and for illustrative purposes only.  
Whilst we don't doubt the accuracy of this floor plan, no responsibility is taken for any error or omission.  
If there is any aspect of particular importance, you should carry out or commission your own inspection of the property.

Mayfair and Marylebone  
JLL, 30 Warwick Street,  
London W1B 5NH

*Urban living, your way.*

[jll.co.uk/residential](http://jll.co.uk/residential)

© 2019 Jones Lang LaSalle IP, Inc. All rights reserved. All information contained herein is from sources deemed reliable; however, no representation or warranty is made to the accuracy thereof.

