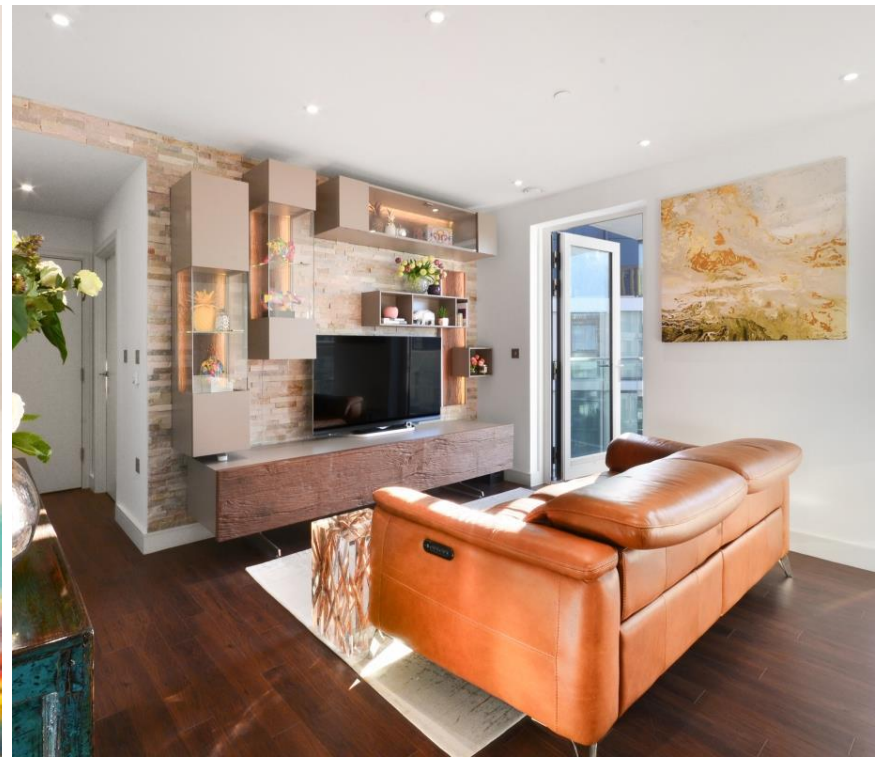




## Wandsworth Road, London SW8

Guide price £595,000 Leasehold





# Description

Offering fantastic 8th floor views, this 1 bedroom apartment situated in sought after Nine Elms development with communal gardens.

The apartment comprises an open plan reception with access to the balcony, a contemporary kitchen equipped with high quality appliances, double bedroom and a large bathroom with walk in shower.

Residents benefit from 24 hr concierge, cinema room, gym and lift access.

Ideally located for the soon to open Nine Elms Underground, Vauxhall Station is within 0.4 miles while local shops and supermarkets are on the doorstep.

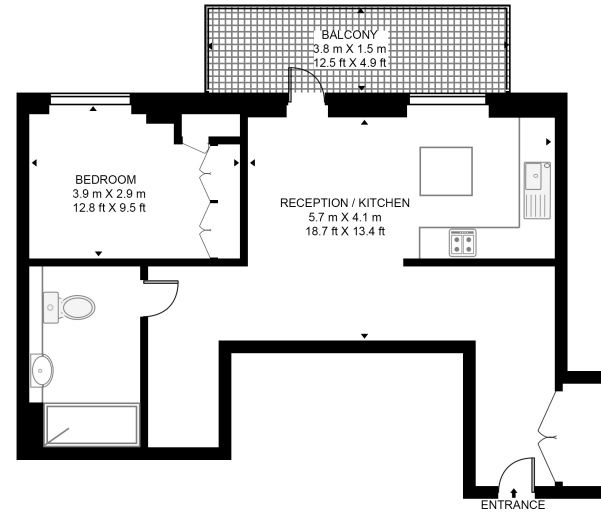


- 1 Double Bedroom
- 1 Bathroom
- Balcony
- 24hr Concierge
- Residents Gym
- Cinema Room
- 0.4 Miles to Vauxhall Station
- EPC: B

# Floorplan

532 sq ft | 49 sq m

**BRENT HOUSE, 50 WANDSWORTH ROAD**  
APPROXIMATE GROSS INTERNAL FLOOR AREA 532 SQ.FT (49.4 SQ.M)



EIGHTH FLOOR

**HDVA**

This floor plan has been defined by the RICS Code of Measurement. This floor plan and all others are for approximate representative purposes only and upon usage is agreed to as such by the client.  
WWW: [hdvirtualart.com](http://hdvirtualart.com) | TEL: 0203.974.1567 | EMAIL: [info@hdvirtualart.com](mailto:info@hdvirtualart.com)

Nine Elms  
4 Riverlight Quay,  
London SW11 8DG  
020 3147 1333  
[nineelms@eu.jll.com](mailto:nineelms@eu.jll.com)

*Urban living, your way.*

[jll.co.uk/residential](http://jll.co.uk/residential)

© 2019 Jones Lang LaSalle IP, Inc. All rights reserved. All information contained herein is from sources deemed reliable; however, no representation or warranty is made to the accuracy thereof.

