



Malthouse Road, London SW11

Guide price £630,000 Leasehold





Description

Beautiful 1 apartment set on the 4th floor in Lexington Gardens, an exclusive development in Nine Elms, London's newest quarter and a short journey from London's most fashionable neighborhoods.

With New York inspiration this apartment offers luxurious living with full heights windows, spacious, light and stylish interior. Comprises an open plan reception leading to the private balcony, modern fitted kitchen, double bedroom and a spacious bathroom.

With a 24-hour concierge service, private residents' gymnasium, state-of-the-art Media Room and private roof garden available for use, Lexington Gardens has been designed to perfectly cater for the modern London lifestyle.

Uniquely situated in Zone 1 between Vauxhall transport hub and Battersea Park and surrounded by the buzz of London's newest quarter.

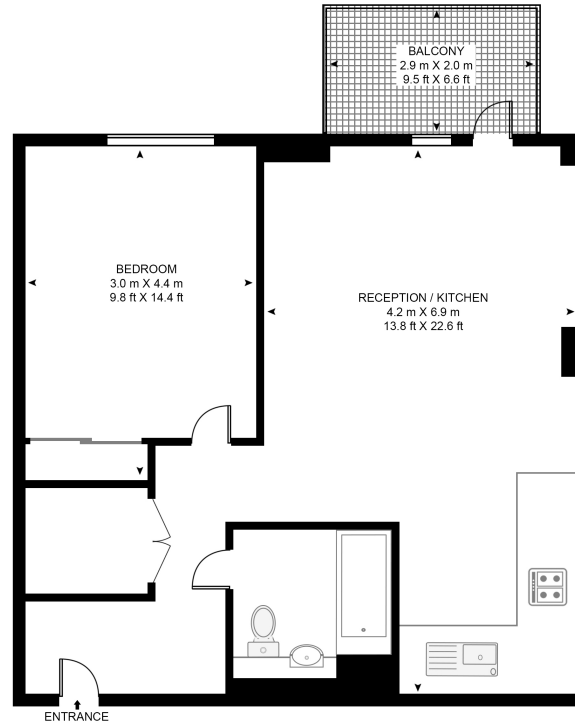
- 1 Bedroom
- 1 Bathroom
- Private Balcony
- 24hr Concierge, Gym & Media Room
- Vauxhall Station 0.7 Miles
- Battersea Park Station 0.8 Miles
- EPC: B



Floorplan

555 sq ft | 52 sq m

DENVER BUILDING, LEXINGTON GARDENS
APPROXIMATE GROSS INTERNAL FLOOR AREA 555 SQ.FT (52.2 SQ.M)



FOURTH FLOOR

HDVA

This floor plan has been defined by the RICS Code of Measurement. This floor plan and all others are for approximate representative purposes only and upon usage is agreed to as such by the client.
WWW: hdvirtualart.com | TEL: 0203.974.1567 | EMAIL: info@hdvirtualart.com

Nine Elms
4 Riverlight Quay,
London SW11 8DG
020 3147 1333
nineelms@eu.jll.com

Urban living, your way.

jll.co.uk/residential

© 2019 Jones Lang LaSalle IP, Inc. All rights reserved. All information contained herein is from sources deemed reliable; however, no representation or warranty is made to the accuracy thereof.

