



Wandsworth Road, London SW8

Guide price £640,000 Leasehold





Description

A beautiful 1 bedroom apartment with private balcony on the 5th floor set in the popular Nine Elms Point development located close to the transport links of Vauxhall Cross and the River Thames.

This luxury apartment comprises of open plan kitchen reception room leading to private balcony, master bedroom with fitted wardrobes and a spacious modern bathroom.

Further benefits include comfort cooling and wooden floors.

Within the development the residents have exclusive use of a private gymnasium, residents library, cinema room & lounge, business suite and 24 hr concierge. Conveniently a large Sainsbury's Supermarket is located under the development.

Set across seven thoughtfully designed and architecturally individual buildings each connected with one another via landscaped podium gardens. Nine Elms Point benefits from various transport connections at Vauxhall Cross.

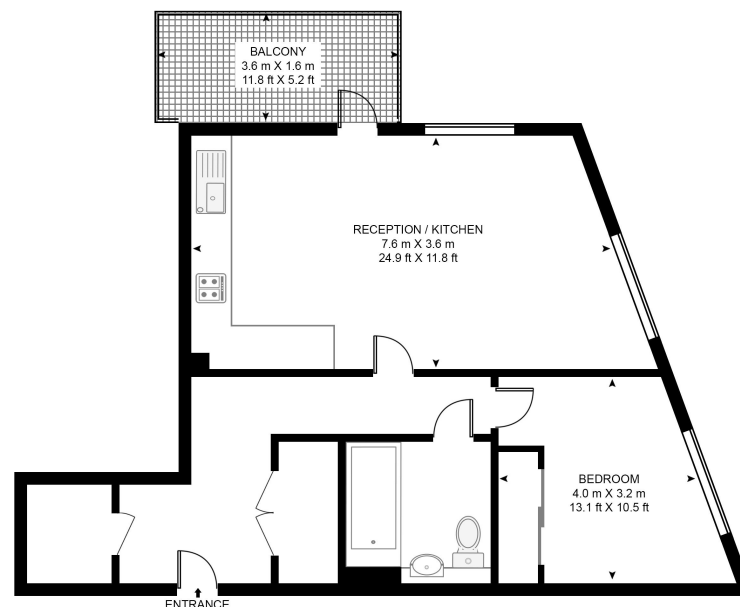
- 1 Bedroom
- 1 Bathroom
- Private Balcony
- Comfort Cooling System
- 24hr Concierge, Residents Gym & Cinema
- Vauxhall Station 0.5 Miles
- Stockwell Underground 0.8 Miles
- EPC: B



Floorplan

529 sq ft | 49 sq m

BRENT HOUSE, 50 WANDSWORTH ROAD
APPROXIMATE GROSS INTERNAL FLOOR AREA 529 SQ.FT (49.2 SQ.M)



FIFTH FLOOR

HDVA

This floor plan has been defined by the RICS Code of Measurement. This floor plan and all others are for approximate representative purposes only and upon usage is agreed to as such by the client.
WWW: hdvirtualart.com | TEL: 0203.974.1567 | EMAIL: info@hdvirtualart.com

Nine Elms
4 Riverlight Quay,
London SW11 8DG
020 3147 1333
nineelms@eu.jll.com

Urban living, your way.

jll.co.uk/residential

© 2019 Jones Lang LaSalle IP, Inc. All rights reserved. All information contained herein is from sources deemed reliable; however, no representation or warranty is made to the accuracy thereof.

