



## Troon Close, London SE16

Guide price £325,000 Leasehold





# Description

A bright and spacious one bedroom apartment on the third floor of this small development close to South Bermondsey mainline station.

The accommodation comprises large entrance hall, separate fitted kitchen, good sized reception room with access to a balcony. Double bedroom and a separate bathroom. The property also benefits from good storage space.

Troon Close is located within easy reach of South Bermondsey Station as well as the shops and restaurants of Old Kent Road. The green space of Southwark park is also nearby.

With no onward chain, early viewings are highly recommended.

- 1 Bedroom
- 1 Bathroom
- 3rd Floor apartment
- Private balcony
- Plenty of built in storage
- Approx. 640 sq ft (59.5 sq m)
- Close to South Bermondsey mainline station
- Close to local amenities
- Chain free
- EPC: B

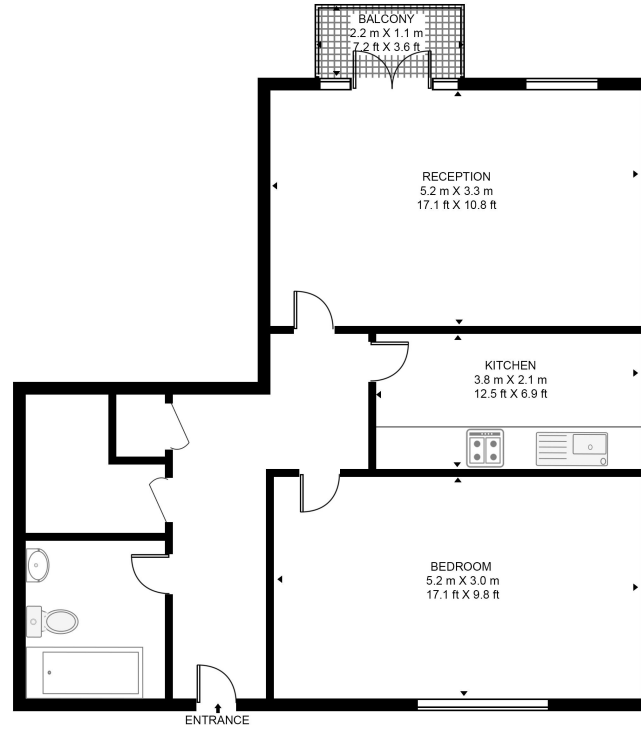


# Floorplan

640 sq ft | 60 sq m

## TRON CLOSE

APPROXIMATE GROSS INTERNAL FLOOR AREA 640 SQ.FT (59.5 SQ.M)



THIRD FLOOR

**HDVA**

This floor plan has been defined by the RICS Code of Measurement. This floor plan and all others are for approximate representative purposes only and upon usage is agreed to as such by the client.

WWW: [hdvirtualart.com](http://hdvirtualart.com) | TEL: 0203.974.1567 | EMAIL: [info@hdvirtualart.com](mailto:info@hdvirtualart.com)

Greenwich  
22 College Approach,  
London SE10 9HY  
02088589986  
[greenwichlettings@eu.jll.com](mailto:greenwichlettings@eu.jll.com)

*Urban living, your way.*

[jll.co.uk/residential](http://jll.co.uk/residential)

© 2019 Jones Lang LaSalle IP, Inc. All rights reserved. All information contained herein is from sources deemed reliable; however, no representation or warranty is made to the accuracy thereof.

