



**EASTNEY STREET,
GREENWICH SE10**





Utterly charming would be the best way to describe this terrace cottage which is located just yards away from the Thames, Royal Naval College, and all of the attractions The Royal Borough has to offer.

Principally the property offers a beautiful fitted kitchen to the front, a reception that opens out into a lovely courtyard garden with outhouse. On the first floor comes two good sized double bedrooms, one with a handy wc for guests. On the top floor comes a lovely bathroom with exposed brickwork and a further study room.

This super home has a lovely homely feel and has been fully renovated by the current owners with original features including fireplaces and wooden floorboards throughout.

Eastney Street comes with a lifestyle right on your doorstep as there are some lovely local pubs, bars and restaurants just a short stroll away.

This property is bursting with character and has to be viewed internally to be fully appreciated.

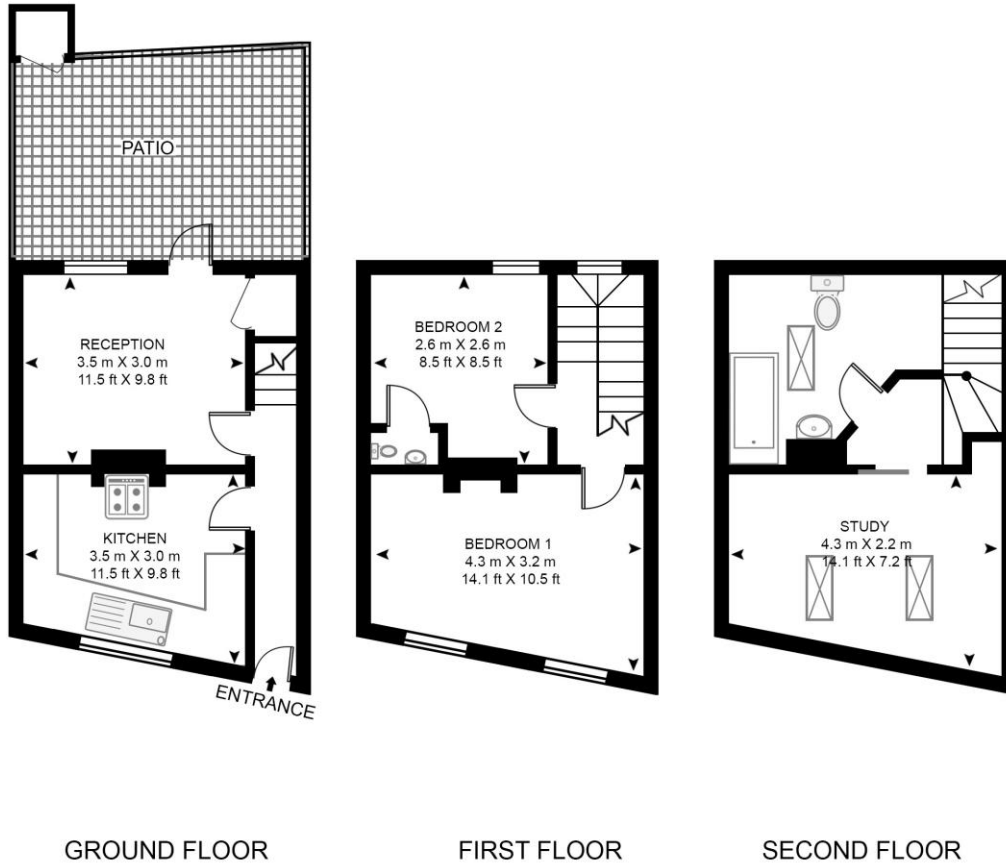
- 2 Bedrooms
- 1 Bathroom
- Period terrace house
- Study
- Approx. 719 sq ft (66.8 sq m)
- Patio
- Period features
- Beautifully presented throughout
- Walk to Central Royal Greenwich
- Close to mainline stations and Cutty Sark DLR
- EPC: C

PRICE
£625,000

LOCAL AUTHORITY
Royal Borough of Greenwich

EASTNEY STREET

APPROXIMATE GROSS INTERNAL FLOOR AREA 719 SQ.FT (66.8 SQ.M)



HDVA

This floor plan has been defined by the RICS Code of Measurement. This floor plan and all others are for approximate representative purposes only and upon usage is agreed to as such by the client.

WWW: hdvirtualart.com | TEL: 0203.974.1567 | EMAIL: info@hdvirtualart.com

22 College Approach
Greenwich
London
SE10 9HY

These particulars are for general information only and do not constitute any part of an offer or contract. All statements contained therein are made without responsibility on the part of the vendors or lessors and are not to be relied upon as statement or representation of fact. Intending purchasers or lessees must satisfy themselves, by inspection, or otherwise, as to the correctness of each of the statements or dimensions contained in these particulars..