



## High Street, London E15

Guide price £480,000 Leasehold





# Description

A stunning sixth floor, three bedroom apartment located in Galliard Homes fantastic development, Sky View Towers, E15.

This fabulous property comprises 909.3 sq ft of luxurious living space and is finished to the highest of specifications throughout.

The apartment benefits from a large array of high specification choices, from a designer kitchen unit with integrated appliances, to an exclusive living space with every emphasis on natural light and beautifully proportioned rooms that exude the highest levels of quality and style.

Residents at Sky View Tower will also enjoy a garden terrace at level 34, providing over 880 sq ft of dramatic communal landscaped space. Residents can also enjoy exclusive facilities which include a private lounge, concierge service and fully equipped resident's gymnasium.

Located for access into the City, Canary Wharf and the West End with Pudding Mill DLR station only a few minutes walk away.

- Three Bedrooms
- Two Bathrooms
- Access to Roof Terrace
- Concierge
- Residential Gymnasium
- 0.3 mile from Pudding Mill Lane Station
- Approx 909.3 sq ft (84.5 sq m)
- Leasehold
- EPC: B



# Floorplan

909 sq ft | 85 sq m

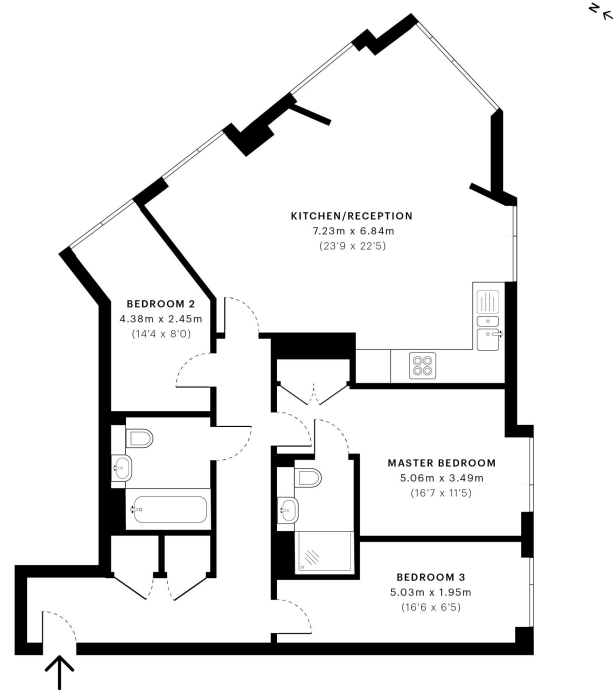


Sky View Tower, E15

CAPTURE DATE  
09/08/2019

LASER SCAN POINTS  
27,104,511

GROSS INTERNAL AREA  
84.5 Sqm / 909.3 Sqft



— Sixth Floor

GROSS INTERNAL AREA  
The footprint of the property  
84.5 Sqm / 909.3 Sqft

NET AREA (INTERNAL)  
Excludes walls and external features  
80.6 Sqm / 867.4 Sqft

EXTERNAL STRUCTURAL FEATURES  
Balconies, terraces, verandas etc.  
0.0 Sqm / 0.0 Sqft

RESTRICTED HEAD HEIGHT  
Limited use area under 1.8m  
0.0 Sqm / 0.0 Sqft



Spec floor plans are produced in accordance with the Royal Institution of Chartered Surveyors' Property Measurement Standards. Plots and gardens are illustrative only and are excluded from all area calculations. Due to rounding, numbers may not add up precisely.



IPMS 3B RESIDENTIAL  
84.5 Sqm / 909.3 Sqft

IPMS 3C RESIDENTIAL  
80.6 Sqm / 867.4 Sqft

SPEC ID  
5d4bd32f67d899edc287185

Stratford  
5 Station Street,  
London E15 1DA  
+4420 3147 1500  
stratford@eu.jll.com

*Urban living, your way.*

[jll.co.uk/residential](http://jll.co.uk/residential)

© 2019 Jones Lang LaSalle IP, Inc. All rights reserved. All information contained herein is from sources deemed reliable; however, no representation or warranty is made to the accuracy thereof.

