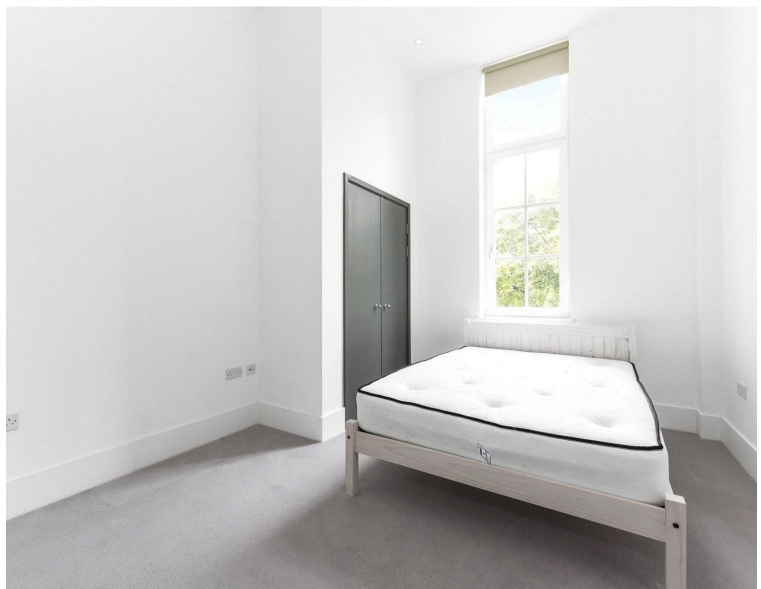
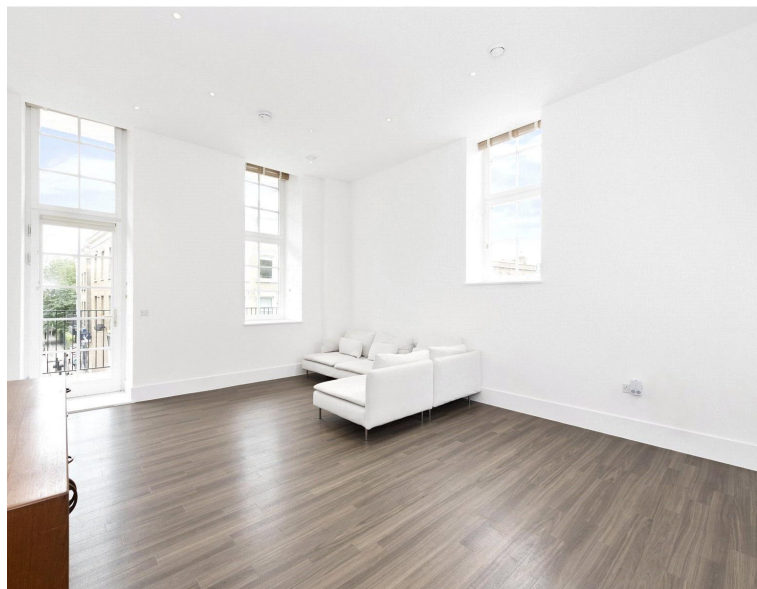


Goldsmiths Row, London E2

Price £500 per week - Unfurnished







Description

A stunning 2 bedroom apartment in the Mettle & Poise development, next to Hackney City farm and Haggerston Park.

This spacious 2 bedroom apartment is situated on the 1st floor and offering approximately 901 sq ft of living space and character. The property comprises 2 double bedrooms each with fitted wardrobes, two luxury bathrooms with Porcelain tiled finish, contemporary kitchen with integrated Siemens appliances, capacious reception with access to large balcony and wood effect Amtico flooring.

The apartment boasts high ceilings and floor to ceiling windows, maximising character and natural light. The development is excellently connected for the City and is a short walk (0.4 miles) from Hoxton Overground station.

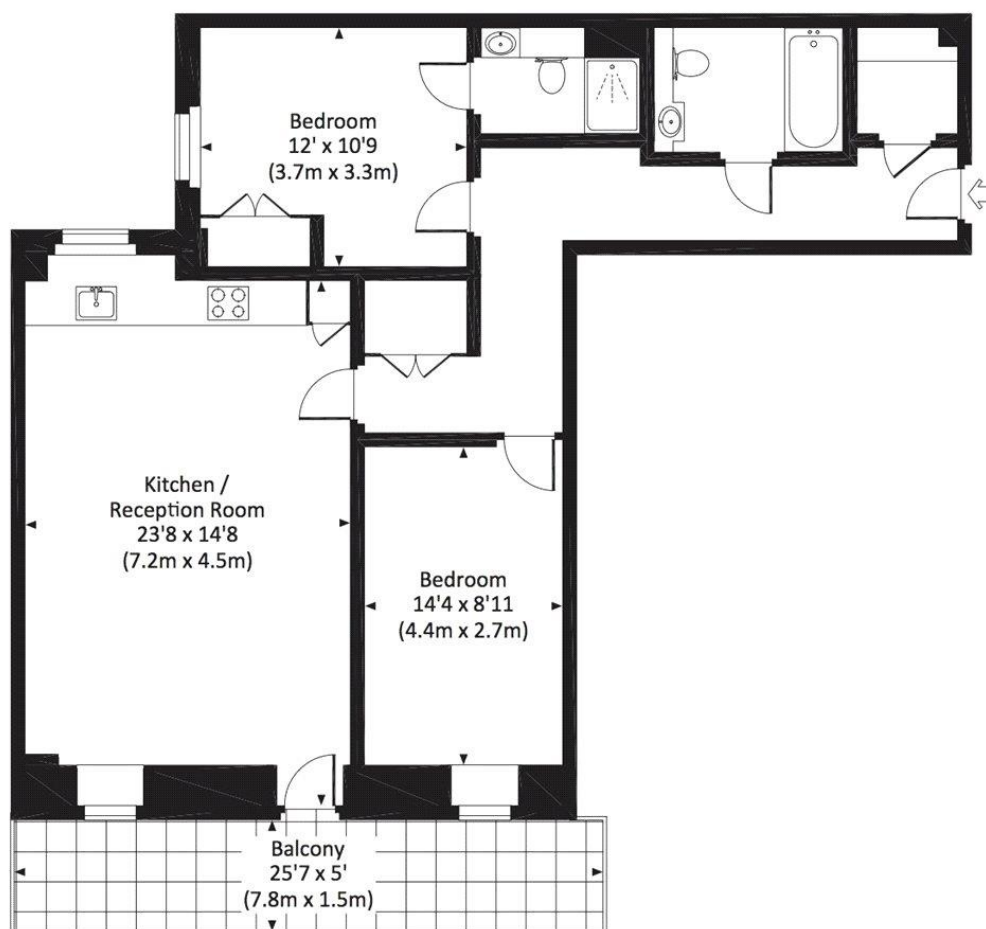
- 2 Bedrooms
- 2 Bathrooms
- Balcony
- Contemporary kitchen with integrated Siemens appliances
- Floor to ceiling windows
- 0.4 mile from Hoxton Overground station
- Approx. 901 sq ft (83.7 sq m)
- Furnished
- EPC: B

Floorplan

901 sq ft | 84 sq m

GOLDSMITHS ROW, E2

Approx. gross internal area
901 Sq Ft. / 83.7 Sq M.



FIRST FLOOR



All measurements have been made in accordance with RICS Code of Measuring Practice which are approximate only and only for illustrative purposes. For the avoidance of doubt, Dowling Jones Design shall not be liable for any reliance on these measurements. © 2016 www.dowlingjones.com 020 7610 9933

City
25 Walbrook The Walbrook
Building,
London EC4N 8AF
020 7337 4000

Urban living, your way.

jll.co.uk/residential

© 2019 Jones Lang LaSalle IP, Inc. All rights reserved. All information contained herein is from sources deemed reliable; however, no representation or warranty is made to the accuracy thereof.

