



Hadrian Street, London SE10

Guide price £650,000 Freehold







Description

A beautifully presented two bedroom, two bathroom mid terrace, period cottage in the heart of East Greenwich.

The accommodation comprises reception room to front with period fireplace and stairs leading up to the first floor. Downstairs bathroom and an openplan kitchen / dining room which leads onto a secluded landscaped rear garden with the benefit of a garden studio.

The first floor offers two double bedrooms with a jack and jill style WC with can be accessed from both bedrooms.

The property is beautifully presented throughout and is close to transport links with Central Greenwich close by with its selection of shops, bar, restaurants and Royal Greenwich Park.

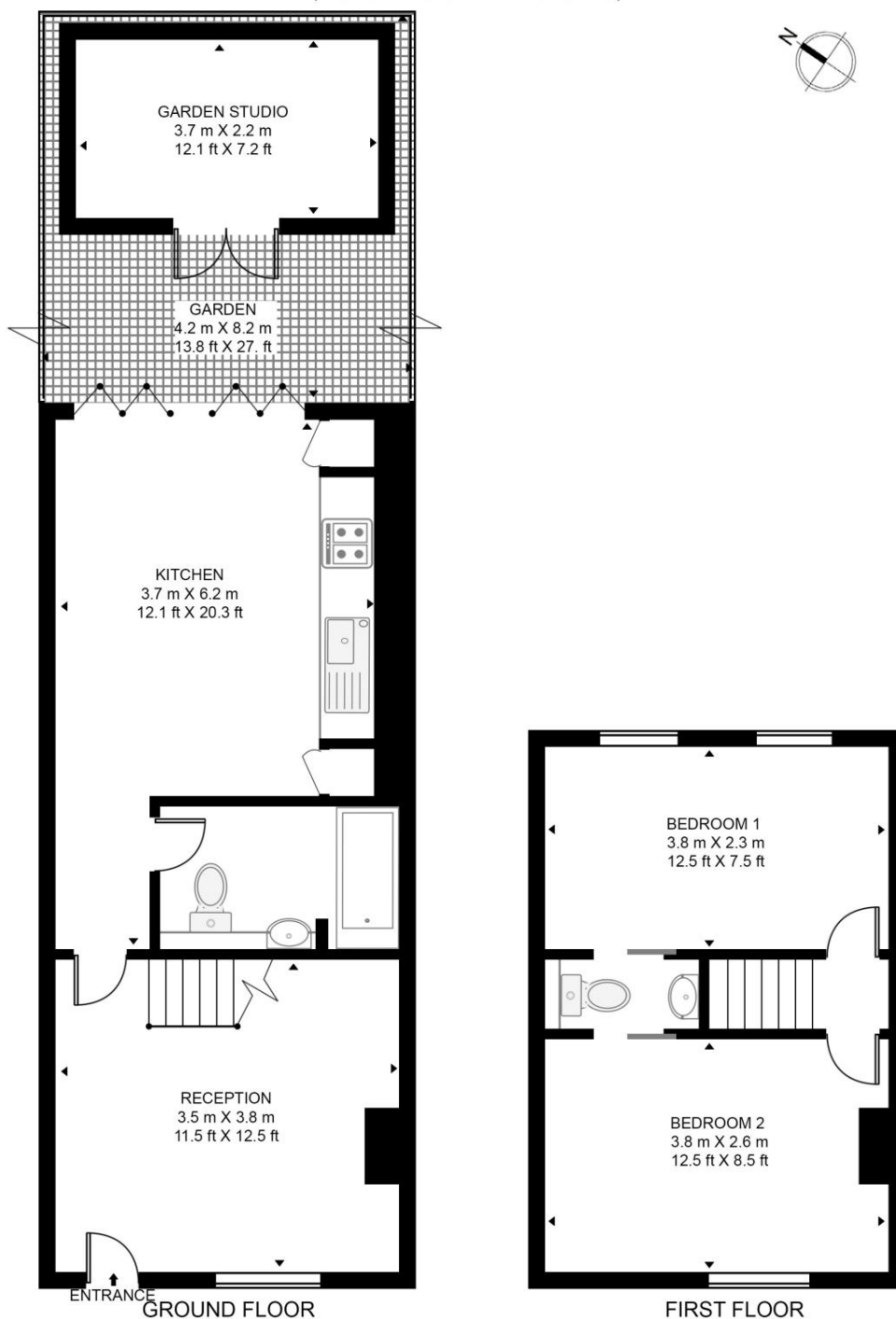
Early viewings are highly recommended.

- 2 Double bedrooms
- 1 Bathroom + separate WC
- Mid-terraced period cottage
- Secluded landscaped rear garden
- Approx. 733 sq ft (68.1 sq m)
- Beautifully presented throughout
- Underfloor heating in kitchen and bathroom
- Close to transport links
- EPC: D

Floorplan

733 sq ft | 68 sq m

HADRIAN STREET
APPROXIMATE GROSS INTERNAL FLOOR AREA 733 SQ.FT (68.1 SQ.M)
(INCLUDING GARDEN STUDIO)



HDVA

This floor plan has been defined by the RICS Code of Measurement. This floor plan and all others are for approximate representative purposes only and upon usage is agreed to as such by the client.

WWW: hdvirtualart.com | TEL: 0203.974.1567 | EMAIL: info@hdvirtualart.com

Greenwich
22 College Approach,
London SE10 9HY
02088589986
greenwichlettings@eu.jll.com

Urban living, your way.

jll.co.uk/residential

© 2019 Jones Lang LaSalle IP, Inc. All rights reserved. All information contained herein is from sources deemed reliable; however, no representation or warranty is made to the accuracy thereof.

