



# Burnsall Street

CHELSEA SW3



# Burnsall Street

CHELSEA SW3

A wide, double-fronted house in this quiet street between the King's Road and Chelsea Green in the heart of Chelsea.

Formerly the home of actress Diana Dors (the house bears a blue plaque) and now refurbished throughout, the house has the unusual feature of a large basement housing a spacious guest, or principal bedroom.

Modernised and offering bright, airy accommodation extending to 2,152 sq ft the house comprises four double bedrooms, three bathrooms (two en-suite), a large kitchen/dining room and a well-proportioned ground floor drawing room.

Burnsall Street is a one way street situated just to the north of King's Road and approximately seven minutes' walk from Sloane Square with its underground station, restaurants and shops.





- 4 Bedrooms
- Bathroom (en suite)
- 2 Shower rooms (1 en suite)
- Double reception room
- Kitchen / dining room
- Guest cloakroom
- Patio
- EPC: D

**GUIDE PRICE**

£4,500,000

**TENURE**

Freehold

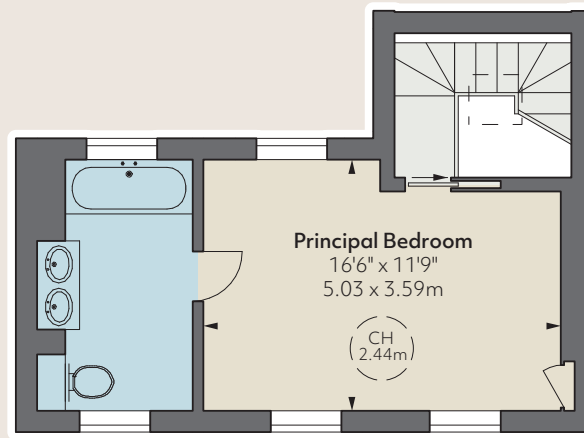
**LOCAL AUTHORITY**

The Royal Borough of  
Kensington & Chelsea

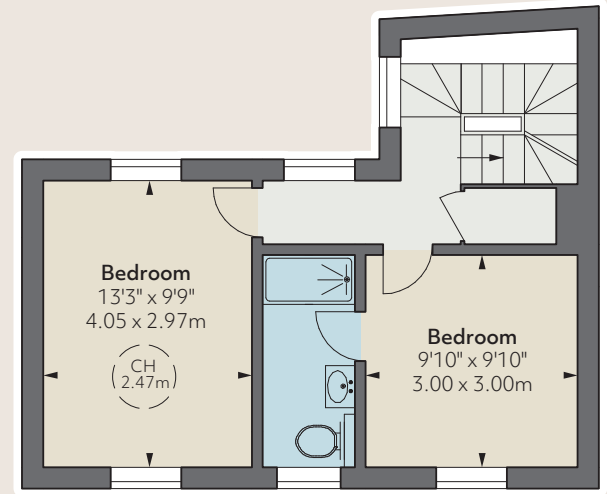
**APPROXIMATE GROSS  
INTERNAL AREA**

2,152 sq ft

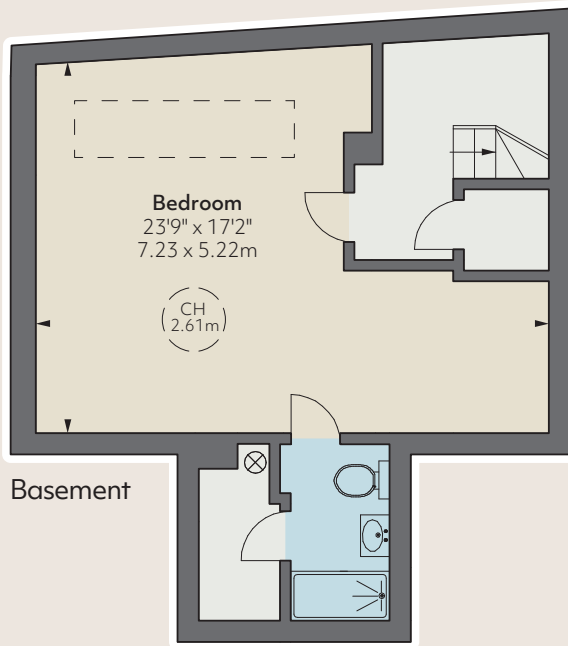
199.66 sq m



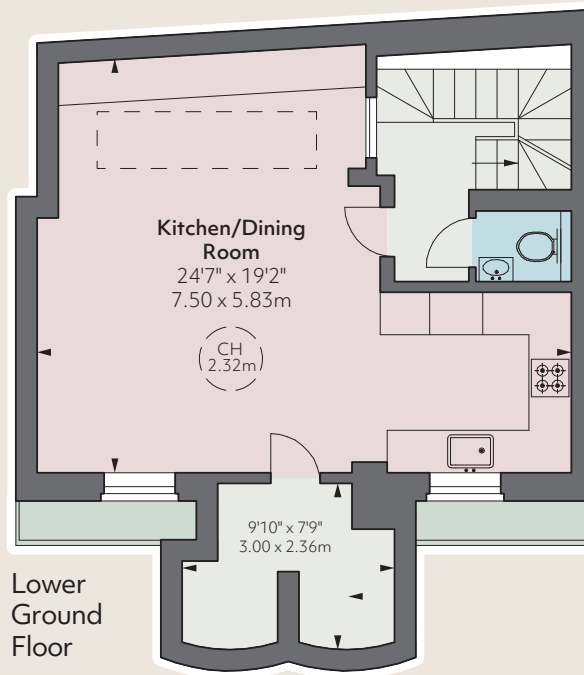
Second Floor



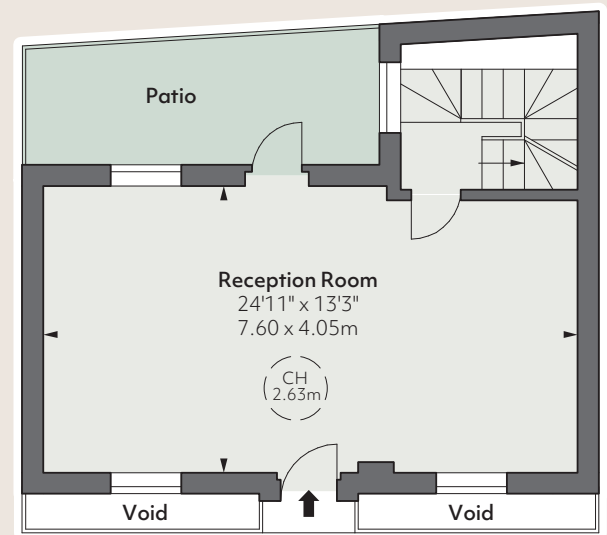
First Floor



Basement



Lower  
Ground  
Floor



Ground Floor

Floorplan for guidance only,  
not to scale or valuations  
purposes. It must not be relied  
upon as a statement of fact. All  
measurements and areas are  
approximate and have been  
prepared in accordance with the  
current edition of the RICS  
Code of Measuring Practice.

These particulars are for general  
information only and do not  
constitute any part of an offer  
or contract. All statements  
contained therein are made  
without responsibility on the  
part of the vendors or lessors  
and are not to be relied upon  
as statement or representation  
of fact. Intending purchasers  
or lessees must satisfy  
themselves, by inspection, or  
otherwise, as to the correctness  
of each of the statements or  
dimensions contained in these  
particulars. This floorplan  
is for guidance only and  
not for valuation purposes.  
16/06/21 JLL-201123B-03GG

**JLL Knightsbridge**

174 Brompton Road, London SW3 1HP

020 7306 1610

**JLL Chelsea**

2 Cale Street, London SW3 3QU

020 7399 5010

[jll.co.uk/primecollection](http://jll.co.uk/primecollection)

