



**WOOD WHARF,
GREENWICH SE10**





With its prime river facing position, this stunning Duplex Penthouse has the most remarkable, panoramic river views across the Thames with Canary Wharf in the distance.

The accommodation is arranged over two floors and comprises two double bedrooms, master with ensuite wet room. Open plan reception / kitchen and dining area which opens onto a large balcony with the most stunning views over the River Thames. On the top floor offers a large study / family room together offering stunning views across the River Thames.

The property is located within Central Royal Greenwich within walking distance of the Greenwich market, local shops, bars and restaurants together with the Cutty Sark DLR and Greenwich mainline station.

This property offers a lifestyle right on your doorstep, early viewings are highly recommended.

- 2 Bedrooms
- 2 Bathrooms
- Arranged over two floors
- Penthouse riverside apartment
- Balcony
- Stunning river views
- Close to mainline and DLR stations
- Parking
- Concierge
- Central Greenwich location
- EPC: C

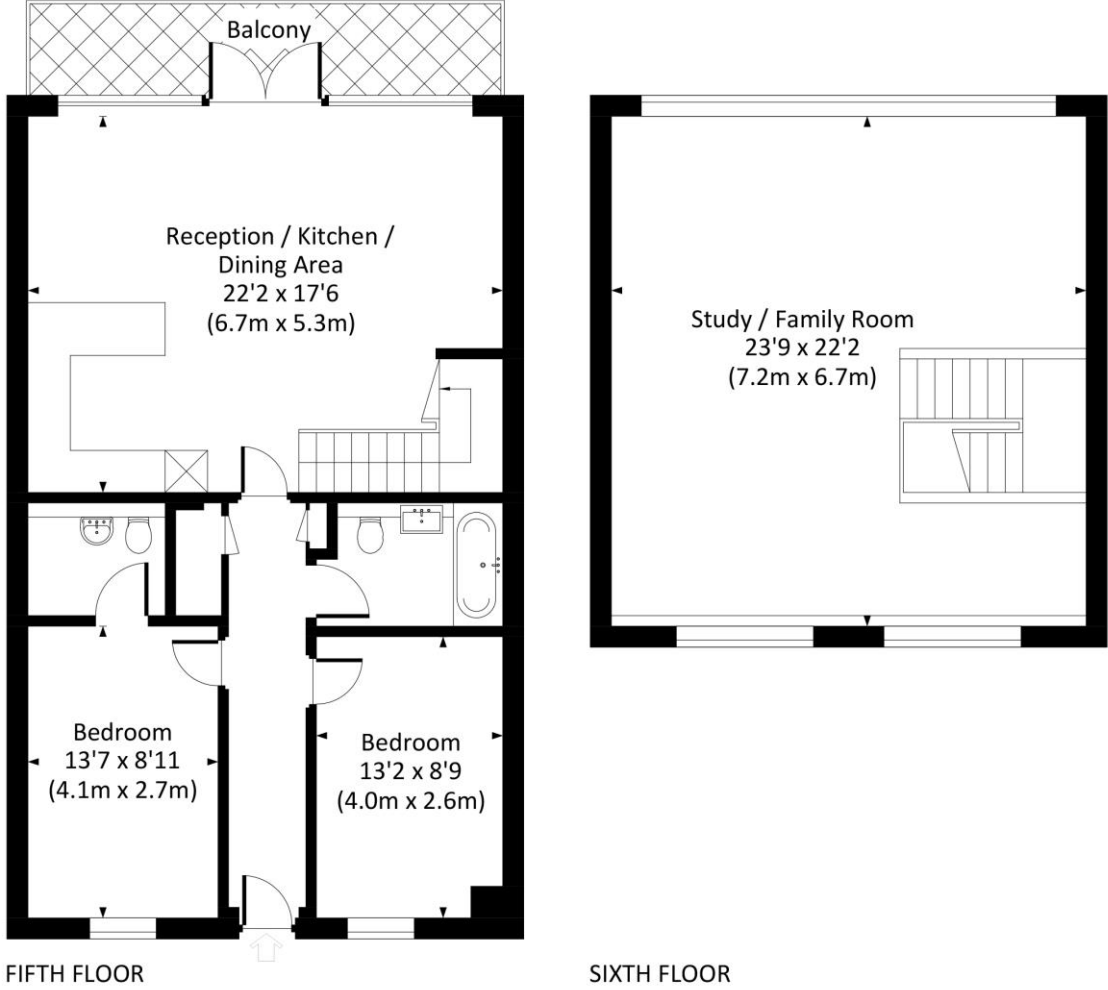
PRICE
OIEO £1,000,000

GROSS INTERNAL AREA
1,365 sq ft (126.8 sq m)

LOCAL AUTHORITY
Royal Borough of Greenwich

HORSEFERRY PLACE, SE10

Approx. gross internal area
1365 Sq Ft. / 126.8 Sq M.



All measurements have been made in accordance with RICS code of Measuring Practice which are approximate only and only for illustrative purposes. For the avoidance of doubt, Dowling Jones Design shall not be liable for any reliance on these measurements. © 2021 www.dowlingjones.com 020 7610 9933

22 College Approach
Greenwich
London
SE10 9HY

These particulars are for general information only and do not constitute any part of an offer or contract. All statements contained therein are made without responsibility on the part of the vendors or lessors and are not to be relied upon as statement or representation of fact. Intending purchasers or lessees must satisfy themselves, by inspection, or otherwise, as to the correctness of each of the statements or dimensions contained in these particulars..