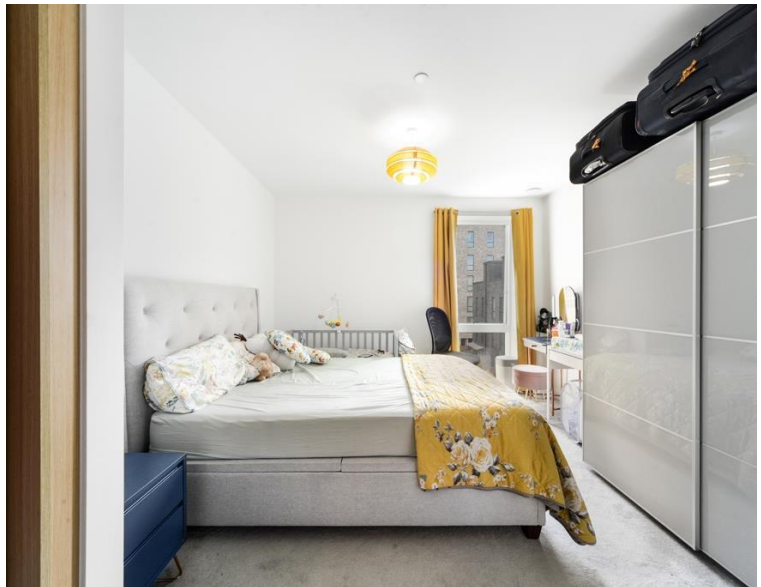




Latimer Square, London SE10

Guide price £430,000 Leasehold







Description

Superbly located for all of the attractions that North Greenwich has to offer, comes this one bedroom apartment with the added benefit of an up to date EWS1 certification.

The apartment is located on the second floor and comprises large entrance hall with built in storage cupboards, double bedroom with built in wardrobes, contemporary bathroom and an open plan fitted kitchen / reception room with access onto a balcony with far reaching views.

North Greenwich is close by with its excellent transport links: Jubilee Line, River Boat service and Westcombe Park. The peninsula is also home to the O2 arena and many restaurants.

Early viewings are highly recommended.

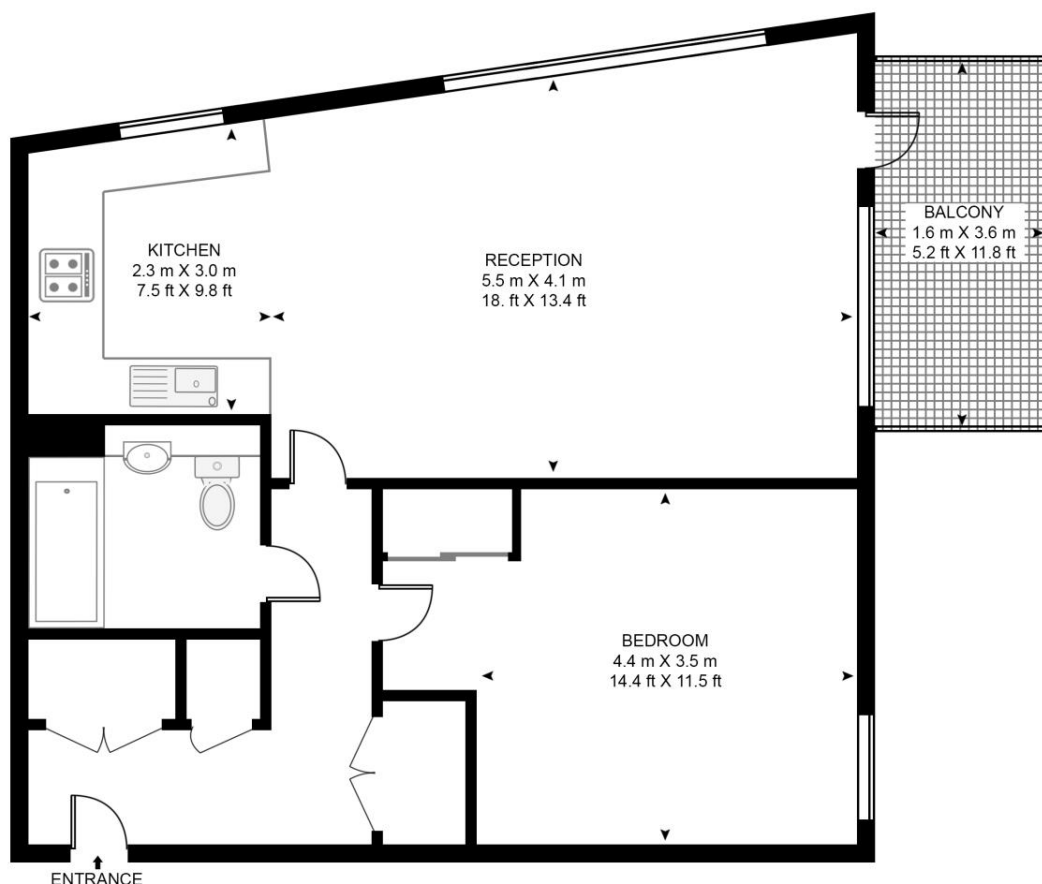
- 1 Bedroom
- 1 Bathroom
- 2nd Floor modern apartment
- Balcony
- Light and spacious
- Approx. 645 sq ft (59.9 sq m)
- Close to Jubilee Line for easy access into City and Canary Wharf
- EWS1 Compliant
- EPC: B

Floorplan

645 sq ft | 60 sq m

MUNYARD HOUSE

APPROXIMATE GROSS INTERNAL FLOOR AREA 645 SQ.FT (59.9 SQ.M)



SECOND FLOOR

HDVA

This floor plan has been defined by the RICS Code of Measurement. This floor plan and all others are for approximate representative purposes only and upon usage is agreed to as such by the client.

WWW: hdvirtualart.com | TEL: 0203.974.1567 | EMAIL: info@hdvirtualart.com

Greenwich
22 College Approach,
London SE10 9HY
02088589986
greenwichlettings@eu.jll.com

Urban living, your way.

jll.co.uk/residential

© 2019 Jones Lang LaSalle IP, Inc. All rights reserved. All information contained herein is from sources deemed reliable; however, no representation or warranty is made to the accuracy thereof.

