



Leyton Road, London E15

Guide price £560,000 Leasehold





Description

An excellent, two double bedroom apartment in this prestigious modern development set within the heart of Stratford - Pacific Building.

Beautifully kept by the owner and immaculately presented throughout, the property consists of two double bedroom, a family bathroom and, a modern fitted kitchen, reception room and plenty of storage throughout. Offering outside space with a private roof balcony.

The Atlantic Building is perfectly positioned to benefit from all Stratford has to offer including excellent transport links and is within walking distance to The Olympic Park.

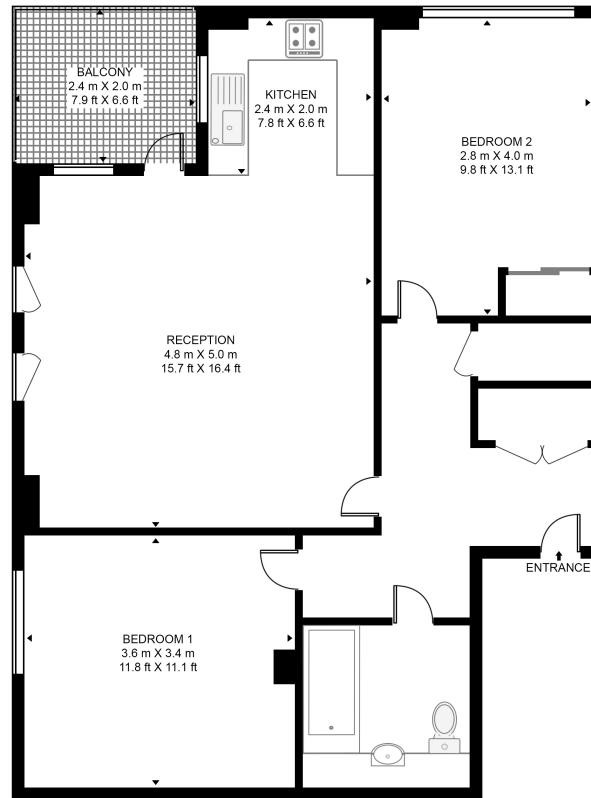


- Two Double Bedrooms
- Two Bathrooms
- Open kitchen and living area
- Balcony
- Approx 763 sq ft (70.9 sq m)
- 0.4 mile Stratford International Station
- Leasehold
- EPC: B

Floorplan

763 sq ft | 71 sq m

PACIFIC BUILDING, 154 LEYTON ROAD
APPROXIMATE GROSS INTERNAL FLOOR AREA 763 SQ.FT (70.9 SQ.M)



FIFTH FLOOR

HDVA

This floor plan has been defined by the RICS Code of Measurement. This floor plan and all others are for approximate representative purposes only and upon usage is agreed to as such by the client.
WWW: hdvirtualart.com | TEL: 0203.974.1567 | EMAIL: info@hdvirtualart.com

Stratford
5 Station Street,
London E15 1DA
020 3147 1500
stratford@eu.jll.com

Urban living, your way.

jll.co.uk/residential

© 2019 Jones Lang LaSalle IP, Inc. All rights reserved. All information contained herein is from sources deemed reliable; however, no representation or warranty is made to the accuracy thereof.

