



New Bond Street, London W1S

Price £1,050 per week - Furnished





Description

A stunning first floor flat (no lift) in this period building on New Bond Street. The property is newly renovated and consists of two double bedrooms with en suite bathrooms, guest cloakroom, a spacious open plan living room with double height sash windows allowing natural light to flood through. The flat has been finished to an excellent standard, is newly furnished and further benefits from wooden flooring throughout. New Bond Street is conveniently located moments from the shopping and transport amenities of Bond Street and Oxford Circus.

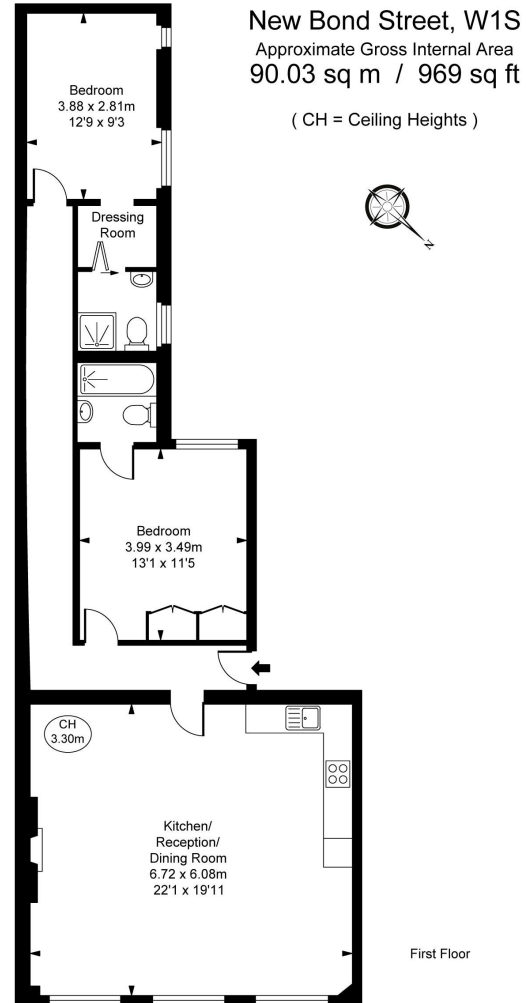
As well as paying the rent, you may also be required to make any applicable permitted payments. If your tenancy does not qualify as an AST, additional fees may apply. Please visit jll.co.uk/fees for details of fees which may be payable when renting a property.

- 2 Double bedrooms
- 2 Bathrooms (en suite)
- Guest cloakroom
- Reception room
- Eat-in kitchen
- First floor
- Approx. 975 sq ft (90 sq m)
- Furnished
- EPC: C



Floorplan

1,000 sq ft | 93 sq m



This plan is not to scale. It is for guidance and not for valuation purposes.
All measurements and areas are approximate only, and have been prepared in accordance with the current edition of the RICS Code of Measuring Practice.
© Fulham Performance

Mayfair and Marylebone
JLL, 30 Warwick Street,
London W1B 5NH

Urban living, your way.

jll.co.uk/residential

© 2019 Jones Lang LaSalle IP, Inc. All rights reserved. All information contained herein is from sources deemed reliable; however, no representation or warranty is made to the accuracy thereof.

