



New Bond Street, London W1S

Price £825 per week - Furnished





Description

A stunning fourth floor flat (no lift) in this period building on New Bond Street. The property consists of master bedroom with en suite bathroom, second double bedroom, one further bathroom, reception room and a fully fitted, eat-in kitchen. The flat has been finished to an excellent standard and further benefits from wooden flooring throughout. New Bond Street is conveniently located moments from the excellent shopping and transport amenities of Bond Street and Oxford Circus.

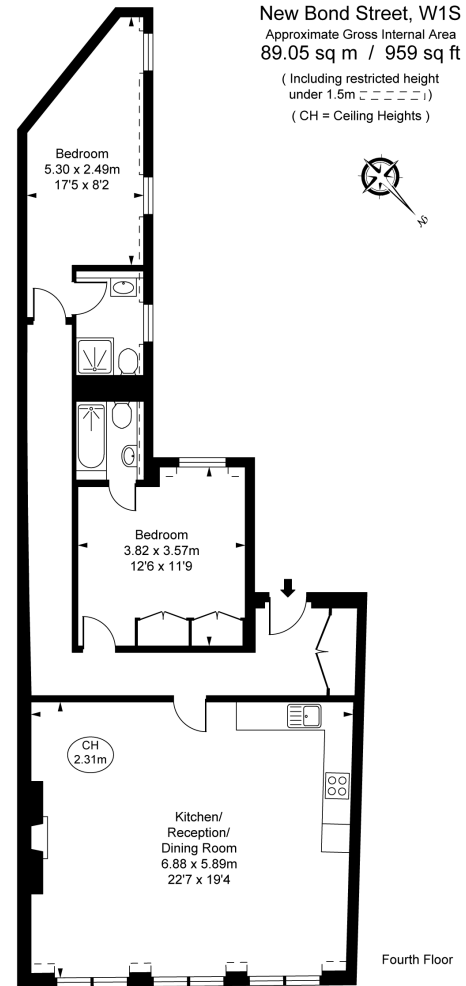
As well as paying the rent, you may also be required to make permitted payments. Please visit jll.co.uk/fees for details of fees which may be payable when renting a property. If your tenancy does not qualify as an AST, additional fees may apply.

- 2 Double bedrooms
- 2 Bathrooms (1 en suite)
- Reception room
- Eat-in kitchen
- Fourth floor
- Approx. 952 sq ft (88 sq m)
- Furnished
- EPC: C



Floorplan

952 sq ft | 88 sq m



This plan is not to scale. It is for guidance and not for valuation purposes.
All measurements and areas are approximate only, and have been prepared in accordance with the current edition of the RICS Code of Measuring Practice.
© Fulham Performance

Mayfair and Marylebone
JLL, 30 Warwick Street,
London W1B 5NH

Urban living, your way.

jll.co.uk/residential

© 2019 Jones Lang LaSalle IP, Inc. All rights reserved. All information contained herein is from sources deemed reliable; however, no representation or warranty is made to the accuracy thereof.

