



# Hither Farm Road, London SE3

Guide price £450,000 Freehold











## Description

A light and spacious end of terrace two bedroom house located on this popular development close to Kidbrooke mainline station.

The beautiful accommodation offers lounge, kitchen breakfast room and doors out to a sizable rear garden. Upstairs comes two double bedrooms the master with en suite and a further family bathroom. There is also allocated parking.

Presented in excellent decorative order throughout this property represents a real find and ideal first time purchase.

Early viewings are highly recommended.

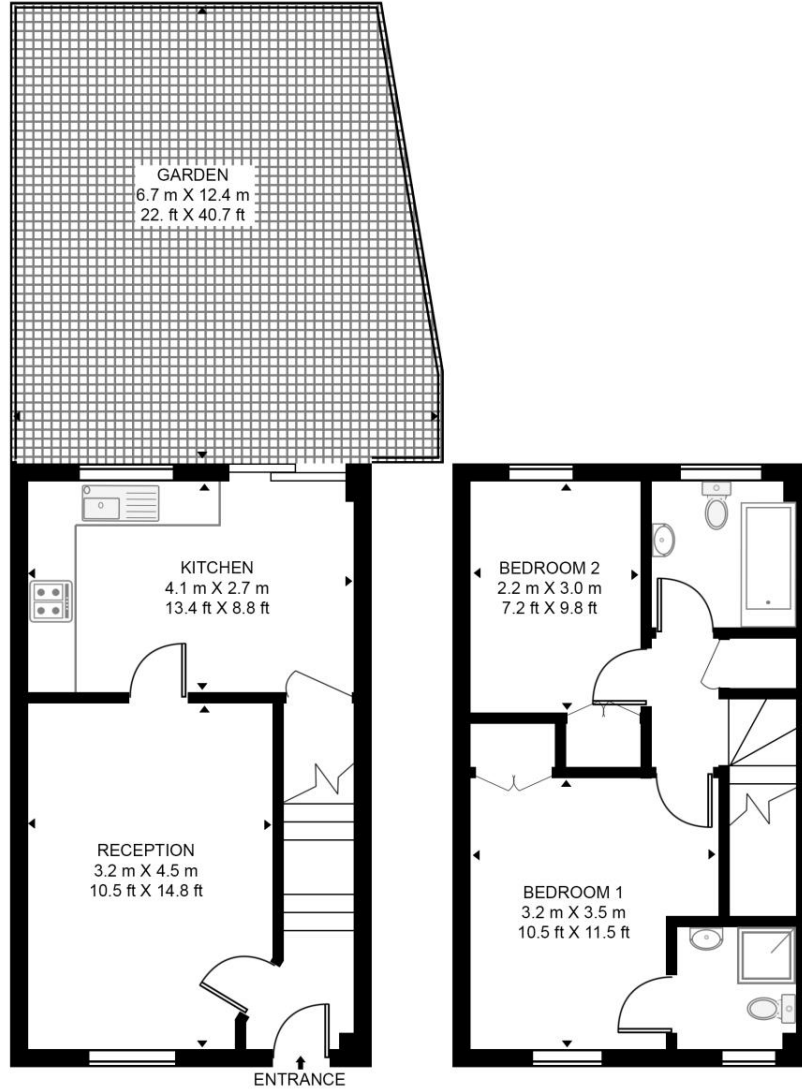
- 2 Bedrooms
- 2 Bathrooms (ensuite)
- End of terrace modern house
- Sizeable rear garden
- Approx. 655 sq ft (60.9 sq m)
- Allocated parking
- 0.3 miles Kidbrooke Mainline Station
- No onward chain
- EPC: C

# Floorplan

655 sq ft | 61 sq m

## HITHER FARM ROAD

APPROXIMATE GROSS INTERNAL FLOOR AREA 655 SQ.FT (60.9 SQ.M)



GROUND FLOOR

FIRST FLOOR



This floor plan has been defined by the RICS Code of Measurement. This floor plan and all others are for approximate representative purposes only and upon usage is agreed to as such by the client.

WWW: [hdvirtualart.com](http://hdvirtualart.com) | TEL: 0203.974.1567 | EMAIL: [info@hdvirtualart.com](mailto:info@hdvirtualart.com)

Greenwich  
22 College Approach,  
London SE10 9HY  
02088589986  
[greenwichlettings@eu.jll.com](mailto:greenwichlettings@eu.jll.com)

*Urban living, your way.*

[jll.co.uk/residential](http://jll.co.uk/residential)

© 2019 Jones Lang LaSalle IP, Inc. All rights reserved. All information contained herein is from sources deemed reliable; however, no representation or warranty is made to the accuracy thereof.

