



MONTPELIER WALK

KNIGHTSBRIDGE SW7

Distinguished by its bright pink façade, the "Pink House" has been extended and modernised and now extends to approximately 1,864 square feet. Arranged over four floors the property offers an attractive drawing room opening onto a secluded, sheltered terrace, a large kitchen/ breakfast room on the lower ground floor and three bedrooms and two bathrooms on the upper floors.

The house faces west and is situated within Knightsbridge Village some 300 metres from the Brompton Road, Harrods and the shopping and transport facilities of Knightsbridge.

FREEHOLD

Guide price £3,250,000

City of Westminster

EPC: C



MONTPELIER WALK

KNIGHTSBRIDGE SW7



APPROXIMATE GROSS INTERNAL AREA

1,815 sq ft

168.61 sq m

VAULT AREA

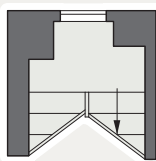
50 sq ft

4.65 sq m

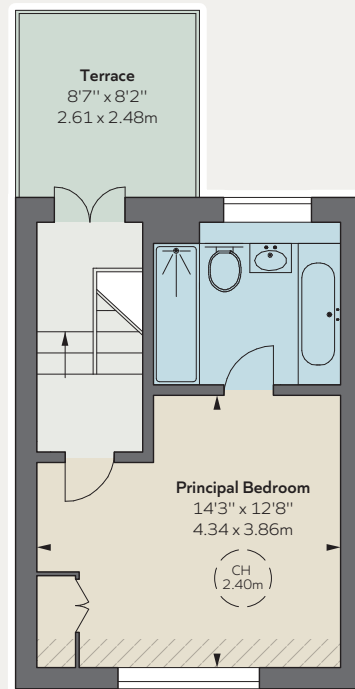
TOTAL

1,864 sq ft

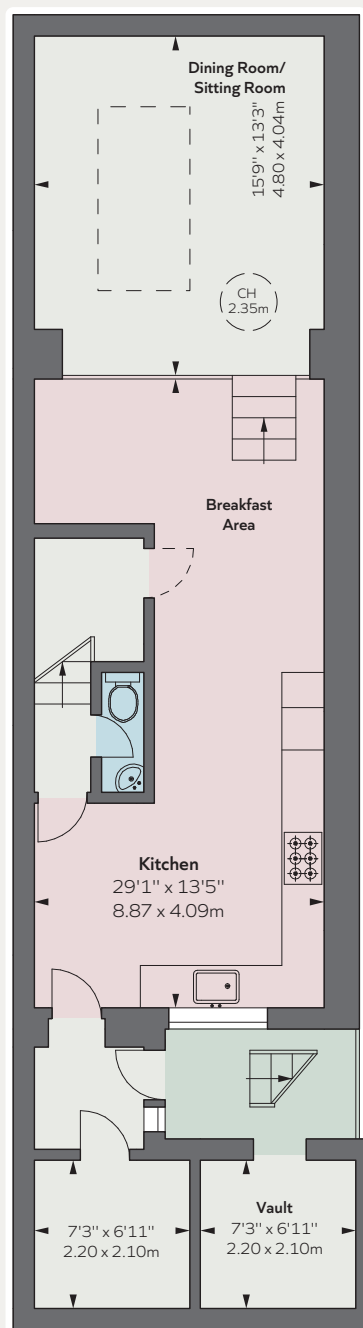
173.25 sq m



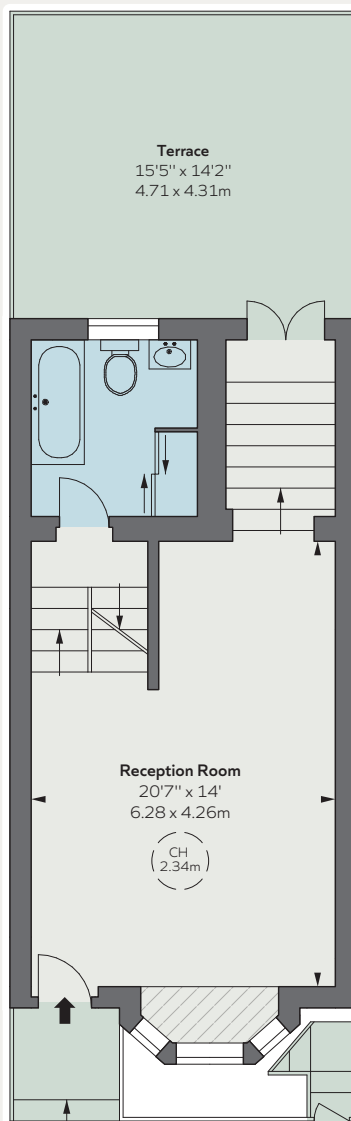
LOWER GROUND FLOOR
HALF LANDING



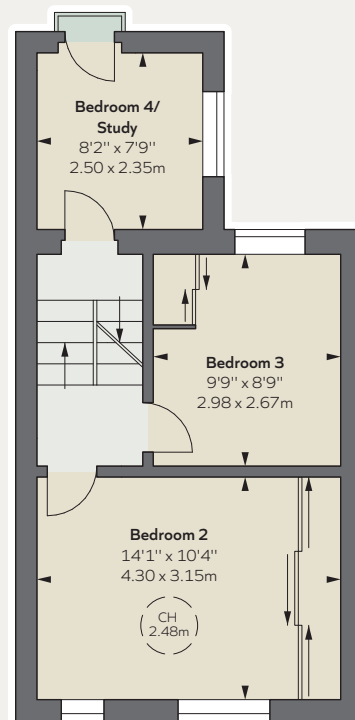
SECOND FLOOR



LOWER GROUND FLOOR



GROUND FLOOR



FIRST FLOOR

Floorplan for guidance only, not to scale or valuations purposes. It must not be relied upon as a statement of fact. All measurements and areas are approximate and have been prepared in accordance with the current edition of the RICS Code of Measuring Practice.

These particulars are for general information only and do not constitute any part of an offer or contract. All statements contained therein are made without responsibility on the part of the vendors or lessors and are not to be relied upon as statement or representation of fact. Intending purchasers or lessees must satisfy themselves, by inspection, or otherwise, as to the correctness of each of the statements or dimensions contained in these particulars. This floorplan is for guidance only and not for valuation purposes. 01/04/22 JLL-210427B-05GG