



Maitland Close, London SE10

Guide price £400,000 Leasehold







Description

An ideal first time buy or investment opportunity. This purpose built flat is located within the Ashburnham Triangle.

The accommodation is split level and comprises large entrance hall with built in storage and access to the top floor, a good sized reception room and separate fitted kitchen. The top floor offers two double bedrooms both with built in storage/warbrobes and a family bathroom.

Greenwich mainline station and the DLR are within easy reach providing fantastic links into the city and Canary Wharf making commuting a dream. Greenwich Village is also within easy reach with its array of shops, bars and restaurants, not to mention the attractions such as The Observatory, The Historic Market, The Cutty Sark and of course The Royal Park.

The property benefits from no onward chain, early viewings are highly recommended.

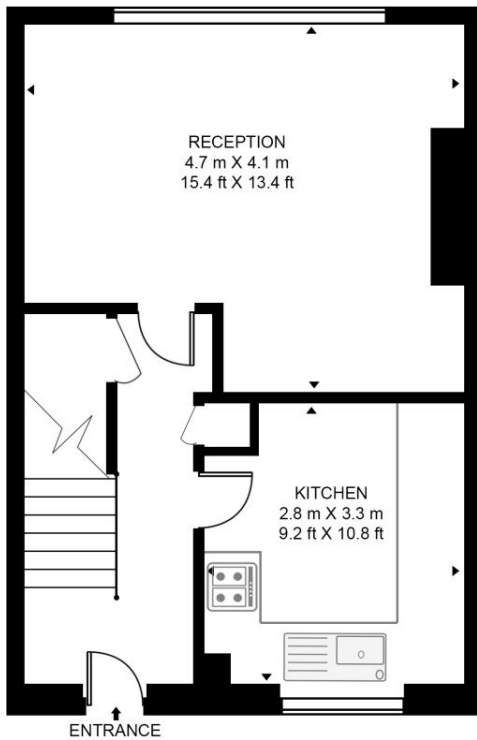
- 2 Bedrooms
- 1 Bathroom
- Top floor split level apartment
- Ashburnham Triangle
- Approx. 763 sq ft (70.9 sq m)
- Close to mainline and DLR stations
- Walk to Central Greenwich
- No onward chain
- EPC: C

Floorplan

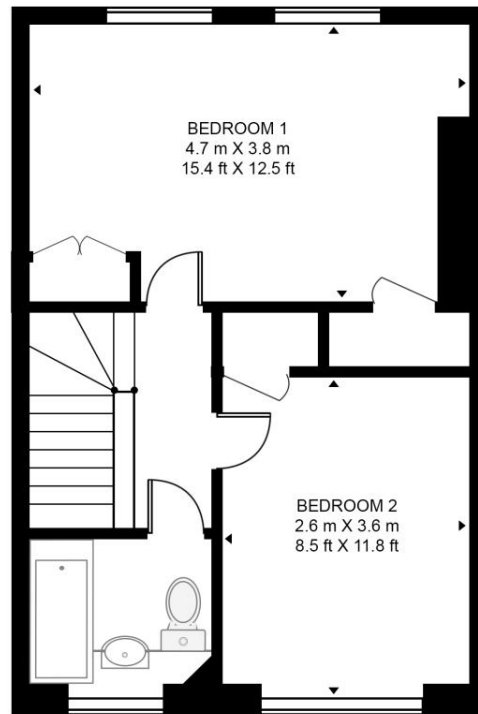
763 sq ft | 71 sq m

MAITLAND CLOSE

APPROXIMATE GROSS INTERNAL FLOOR AREA 763 SQ.FT (70.9 SQ.M)



SIXTH FLOOR



SEVENTH FLOOR

HDVA

This floor plan has been defined by the RICS Code of Measurement. This floor plan and all others are for approximate representative purposes only and upon usage is agreed to as such by the client.

WWW: hdvirtualart.com | TEL: 0203.974.1567 | EMAIL: info@hdvirtualart.com

Greenwich
22 College Approach,
London SE10 9HY
02088589986
greenwichlettings@eu.jll.com

Urban living, your way.

jll.co.uk/residential

© 2019 Jones Lang LaSalle IP, Inc. All rights reserved. All information contained herein is from sources deemed reliable; however, no representation or warranty is made to the accuracy thereof.

