



## Wandsworth Road, London SW8

Price £435 per week - Furnished





# Description

**\*Zero Deposit Available\*** A bright and modern 1 bedroom in the recently built Sky Gardens close to Vauxhall.

Comprising of an open plan kitchen and reception room with far reaching views and access to a winter garden, master bedroom with built in storage and luxury bathroom.

Residents benefit from a fully equipped gym overlooking an indoor garden, a 24 hour concierge service, secure entry and bike storage.

On top of the building is the sky garden itself which offers panoramic views of London.

Located in the Nine Elms district, just across the river south of Chelsea, a short distance from Vauxhall station, offering mainline train services and the underground.

- 1 Bedroom
- 1 Bathroom
- Zero Deposit Available
- Winter garden
- 24 hr. concierge
- Residents gym
- Vauxhall stations
- 546 sq. ft. (50 sq.m)
- Furnished
- EPC: B

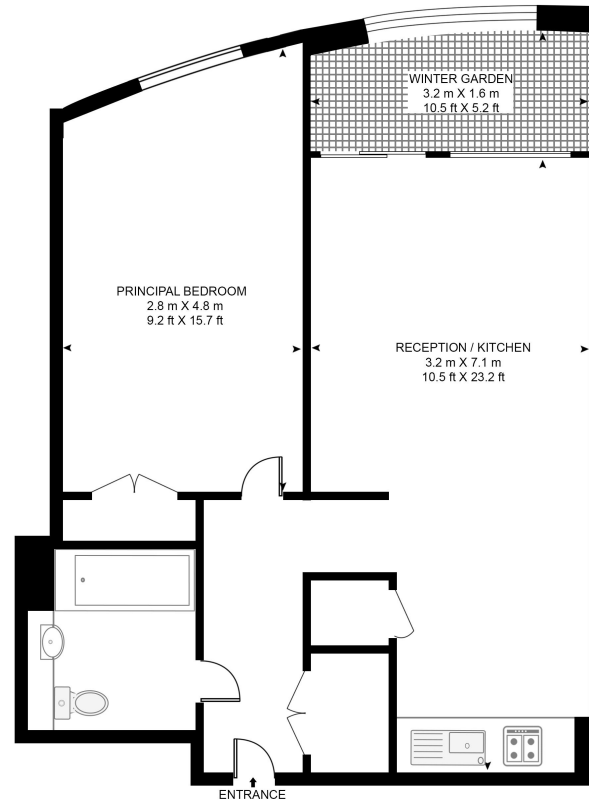


# Floorplan

546 sq ft | 51 sq m

## SKY GARDENS, 155 WANDSWORTH ROAD

APPROXIMATE GROSS INTERNAL FLOOR AREA 493 SQ.FT (45.8 SQ.M)  
(INCLUDING WINTER GARDEN 546 SQ.FT (50.7 SQ.M))



SIXTEENTH FLOOR

**HDVA**

This floor plan has been defined by the RICS Code of Measurement. This floor plan and all others are for approximate representative purposes only and upon usage is agreed to as such by the client.  
WWW: [hdvirtualart.com](http://hdvirtualart.com) | TEL: 0203.974.1567 | EMAIL: [info@hdvirtualart.com](mailto:info@hdvirtualart.com)

Nine Elms  
4 Riverlight Quay,  
London SW11 8DG  
020 3147 1333  
[nineelms@eu.jll.com](mailto:nineelms@eu.jll.com)

*Urban living, your way.*

[jll.co.uk/residential](http://jll.co.uk/residential)

© 2019 Jones Lang LaSalle IP, Inc. All rights reserved. All information contained herein is from sources deemed reliable; however, no representation or warranty is made to the accuracy thereof.

