



South Eaton Place, London SW1W

Price £1,350 per week - Furnished





Description

A wonderful ground and lower ground floor apartment in this period building in the heart of Belgravia. The property consists of master bedroom with en suite bathroom, two further bedrooms, one shower room, guest cloakroom, a large reception room and a fully fitted kitchen. Further benefits include wooden flooring in the reception room, air conditioning and a daytime caretaker. There is also use of communal gardens by negotiation. South Eaton Place is conveniently located moments from the many shopping and transport amenities of Sloane Square.

As well as paying the rent, you may also be required to make permitted payments. Please visit jll.co.uk/fees for details of fees which may be payable when renting a property. If your tenancy does not qualify as an AST, additional fees may apply.

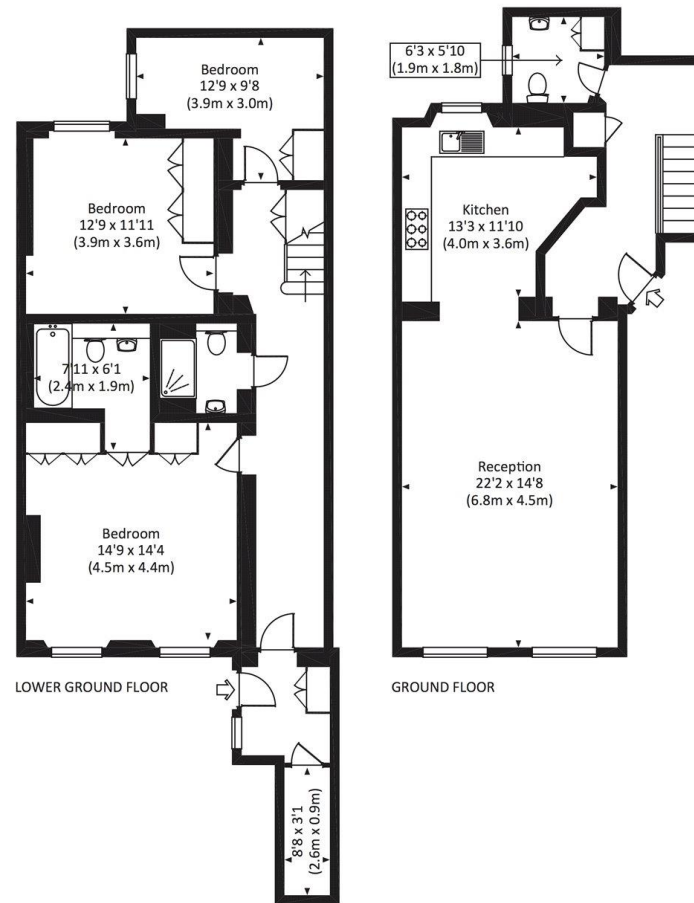
- 3 Bedrooms
- 1 Bathroom (en suite)
- 1 Shower room
- Guest cloakroom
- Reception room
- Fully fitted kitchen
- Ground & lower ground floor
- Communal gardens by application
- Approx. 1,514 sq ft (140 sq m)
- Furnished



Floorplan

1,514 sq ft | 141 sq m

Approx. gross internal area
1514 Sq Ft. / 140.7 Sq M.



dpf All measurements have been made in accordance with RICS Code of Measuring Practice which are approximate only and only for illustrative purposes. For the avoidance of doubt, Dowling Jones Design shall not be liable for any reliance on these measurements. © 2018 www.dowlingjones.com 020 7610 9933

Knightsbridge
174 Brompton Road,
London SW3 1HP
020 7306 1600
knightsbridge@eu.jll.com

Urban living, your way.

jll.co.uk/residential

© 2019 Jones Lang LaSalle IP, Inc. All rights reserved. All information contained herein is from sources deemed reliable; however, no representation or warranty is made to the accuracy thereof.

