

## St. George Wharf, London SW8

Asking price £795,000 Leasehold







## Description

Beautiful and spacious 2 bedroom apartment situated on the 4th floor of Drake House, offering an attractive outlook over the development's landscape gardens towards the River Thames.

The apartment comprises spacious semi open plan reception with the option to separate the kitchen with French doors, 2 double bedrooms - one of which benefits from en suite bathroom - all with access to the full length private balcony providing views towards the landscaped gardens and the River Thames, and a further family bathroom.

Residents of St George Wharf benefit from 24 hour security and concierge service, as well as a range of on site amenities including a small supermarket, gym, doctor's surgery and a selection of cafes and restaurants.

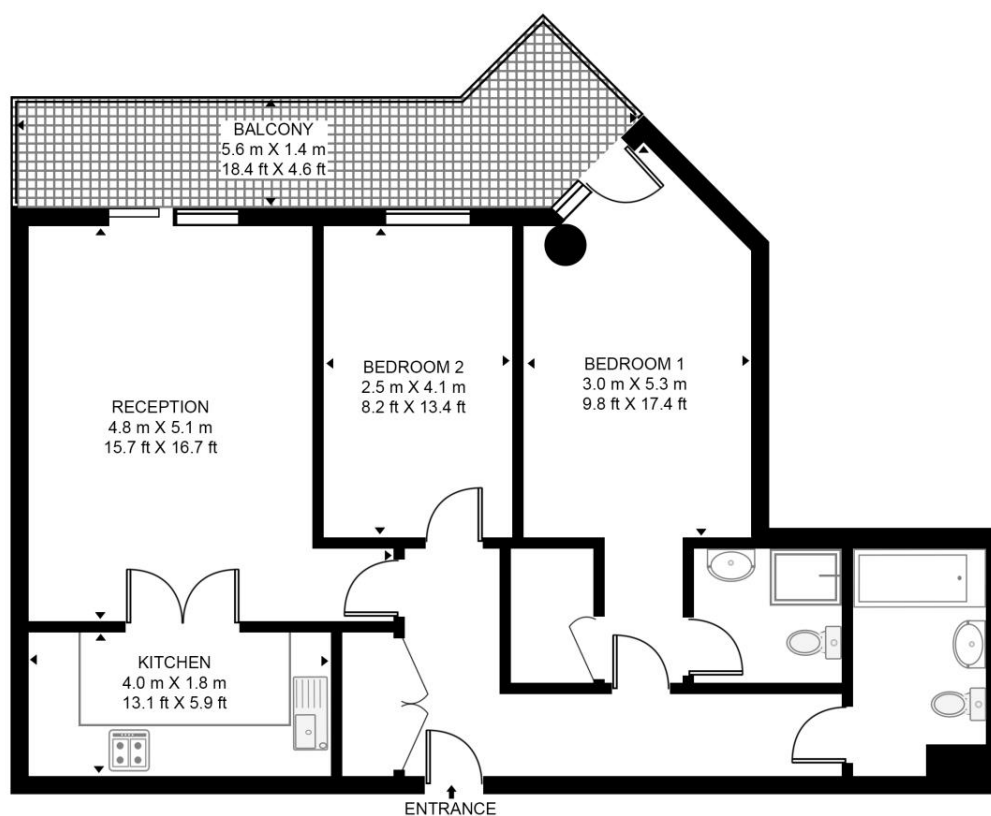
- River Views
- 2 Double Bedrooms
- 2 Bathrooms
- Full Length Private Balcony
- 24Hr Concierge
- Supermarket, Gym, GP Surgery
- 0.2 Miles to Vauxhall Station
- EPC D

# Floorplan

855 sq ft | 79 sq m

## DRAKE HOUSE, ST GEORGE'S WHARF

APPROXIMATE GROSS INTERNAL FLOOR AREA 855 SQ.FT (79.4 SQ.M)



### FOURTH FLOOR

**HDVA**

This floor plan has been defined by the RICS Code of Measurement. This floor plan and all others are for approximate representative purposes only and upon usage is agreed to as such by the client.

WWW: [hdvirtualart.com](http://hdvirtualart.com) | TEL: 0203.974.1567 | EMAIL: [info@hdvirtualart.com](mailto:info@hdvirtualart.com)

Nine Elms  
4 Riverlight Quay,  
London SW11 8DG  
+4420 3147 1333  
[nineelms@eu.jll.com](mailto:nineelms@eu.jll.com)

*Urban living, your way.*

[jll.co.uk/residential](http://jll.co.uk/residential)

© 2019 Jones Lang LaSalle IP, Inc. All rights reserved. All information contained herein is from sources deemed reliable; however, no representation or warranty is made to the accuracy thereof.

