



Queen Anne Street, London W1G

Price £750 per week - Furnished, Unfurnished





Description

A bright and spacious fourth floor apartment, in the heart of Marylebone on Queen Anne Street. The property consists of master bedroom with en suite shower room, second double bedroom, one further shower room and reception room with open plan kitchen. Queen Anne Street is situated within easy walking distance of Oxford Street, Mayfair and Baker Street.

Having your property professionally managed by The Howard de Walden Estate not only offers exceptional levels of service and high quality, professional property management. Marylebone Village is one of central London's most distinctive and characterful shopping destinations, home to a high proportion of small, independent businesses. Residents of HDWE also benefit from access to an array of discounts within Marylebone Village, resident social opportunities and local events which make Marylebone Village a unique and vibrant place to call home.

As well as paying the rent, you may also be required to make permitted payments. Please visit jll.co.uk/fees for details of fees which may be payable when renting a property. If your tenancy does not qualify as an AST, additional fees may apply.


- Master bedroom with en suite shower room
- Second double bedroom
- One further shower room
- Reception room
- Open plan kitchen
- Fourth floor
- Unfurnished/furnished by separate negotiation
- Professional property management
- Eligibility for local discounts in Marylebone Village
- Wifi included

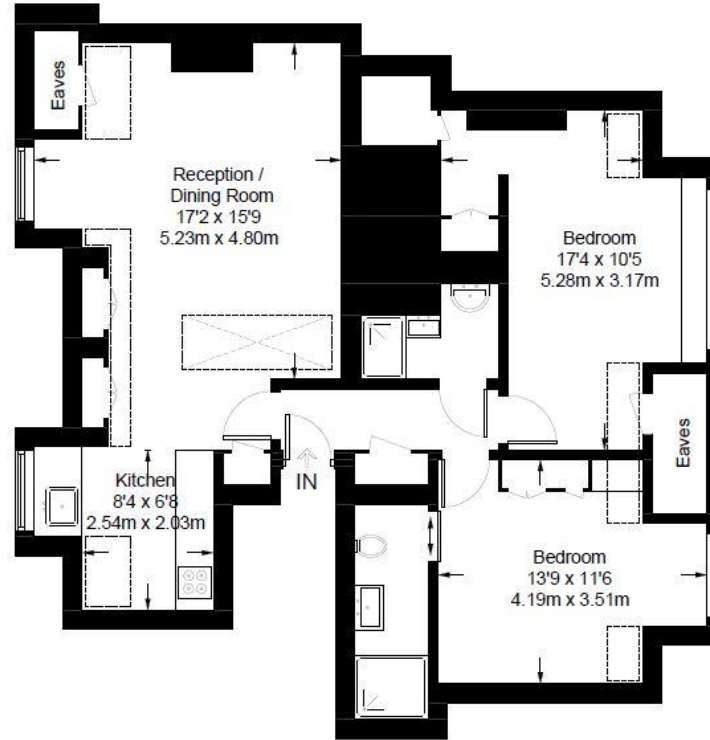


Fourth Floor Flat, Queen Anne Street

Approximate Gross Internal Area = 794 sq ft / 73.8 sq m
(Excluding Eaves / Reduced Headroom)
Eaves / Reduced Headroom = 115 sq ft / 10.7 sq m
Total = 909 sq ft / 84.5 sq m



 = Reduced headroom below 1.5m / 5'0"



Fourth Floor

Not to scale, for guidance only and must not be relied upon as a statement of fact.
All measurements and areas are approximate only and have been prepared in
accordance with the current edition of the RICS Code of Measuring Practice.