



## Park Crescent Mews West, London W1G

Price £750 per week - Furnished, Unfurnished





# Description

A wonderful mews house, spread over three floors and situated in the heart of Marylebone. The property comprises two double bedrooms, one bathroom, reception room, eat in kitchen and garage parking. Park Crescent Mews West is located within walking distance of Marylebone Village, Regents Park, and the ample shops, restaurants and transport links that the area has to offer.

Having your property professionally managed by The Howard de Walden Estate not only offers exceptional levels of service and high quality, professional property management. Marylebone Village is one of central London's most distinctive and characterful shopping destinations, home to a high proportion of small, independent businesses. Residents of HDWE also benefit from access to an array of discounts within Marylebone Village, resident social opportunities and local events which make Marylebone Village a unique and vibrant place to call home.

As well as paying the rent, you may also be required to make permitted payments. Please visit [jll.co.uk/fees](http://jll.co.uk/fees) for details of fees which may be payable when renting a property. If your tenancy does not qualify as an AST, additional fees may apply.

- Two double bedrooms
- One bathroom
- Reception room
- Eat in kitchen
- Garage
- Unfurnished/furnished by separate negotiation
- Professional property management
- Eligibility for local discounts in Marylebone Village
- Wifi included
- Approx. 1216 sq ft (113 sq m)

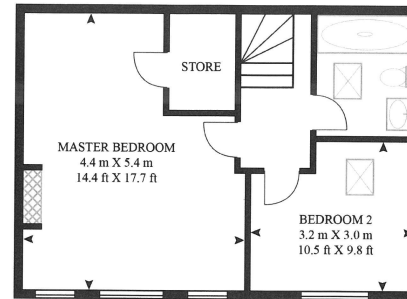


# Floorplan

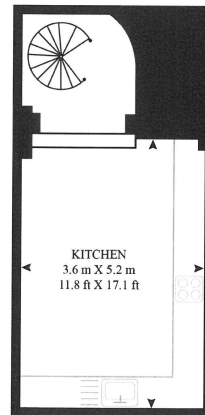
1,216 sq ft | 113 sq m

## PARK CRESCENT MEWS WEST

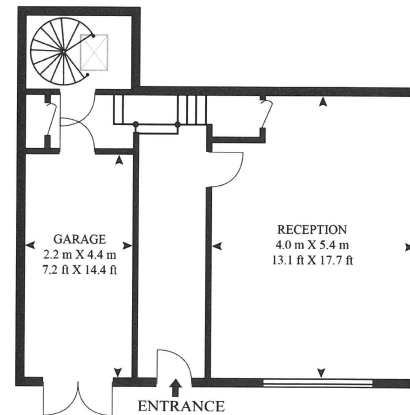
APPROXIMATE GROSS INTERNAL FLOOR AREA 1216 SQ.FT (113 SQ.M)



FIRST FLOOR



LOWER GROUND FLOOR



GROUND FLOOR

Mayfair and Marylebone  
JLL, 30 Warwick Street,  
London W1B 5NH

*Urban living, your way.*

[jll.co.uk/residential](http://jll.co.uk/residential)

© 2019 Jones Lang LaSalle IP, Inc. All rights reserved. All information contained herein is from sources deemed reliable; however, no representation or warranty is made to the accuracy thereof.

