



Walton Street
KNIGHTSBRIDGE SW3



A charming upper maisonette situated on the first, second and third floors of a London stucco fronted period building with retail on the ground floor. It is located at the eastern end of Walton Street, near to the junction with Pont Street and close the Brompton Road, Harrods and Sloane Street.

- 3 Bedrooms
- Bathroom (en suite)
- Shower room
- Kitchen / breakfast room
- Reception room
- Independent gas central heating and hot water
- EPC: D

Guide Price £1,780,000

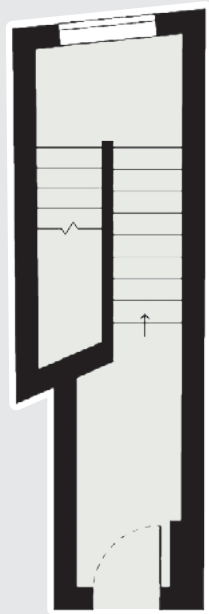
Tenure Leasehold, 91 years remaining (expiring 09/2/2112)

Ground Rent £250 per annum (re-viewable)

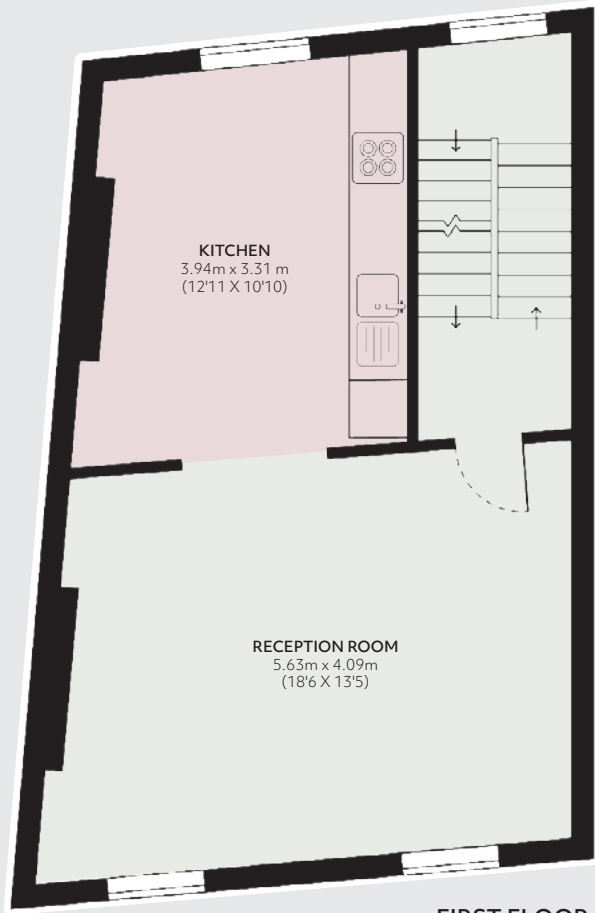
Service Charge £642 for year to 27/09/20

Local Authority The Royal Borough of Kensington & Chelsea





↑
GROUND FLOOR



FIRST FLOOR



SECOND FLOOR



THIRD FLOOR

Approximate Gross Internal Area

1,110.41 sqft

103.16sqm

Restricted Head Height

55 sqft

5.11 sqm



THE
BROCHURE

These particulars are for general information only and do not constitute any part of an offer or contract. All statements contained therein are made without responsibility on the part of the vendors or lessors and are not to be relied upon as statement or representation of fact. Intending purchasers or lessees must satisfy themselves, by inspection, or otherwise, as to the correctness of each of the statements or dimensions contained in these particulars. This floorplan is for guidance only and not for valuation purposes. 15/07/21 JLL-210714-02GG

Floorplan for guidance only, not to scale or valuations purposes. It must not be relied upon as a statement of fact. All measurements and areas are approximate and have been prepared in accordance with the current edition of the RICS Code of Measuring Practice.

JLL Knightsbridge

174 Brompton Road, London SW3 1HP

020 7306 1610

JLL Chelsea

2 Cale Street, London SW3 3QU

020 7399 5010

jll.co.uk/primecollection

