



City North Place, London N4

Guide price £770,000 Leasehold





Description

A stunning 2 bedroom, 2 bathroom property on the 18th floor within vibrant, cosmopolitan development in Finsbury Park, City North is integrated within a growing cultural community. It is only moments from underground and mainline stations that can transport you to the sights and attractions of central London within minutes.

This beautiful apartment has been finished to the highest standard and offers a spacious open plan living area with triple aspect floor to ceiling windows allowing maximum natural light. The living area leads to a 907 Sq Ft offering two balconies.

Both bedrooms are good size doubles with en-suite bathroom to master and built in storage.

City North is set across four sleek and stylish buildings including two awe-inspiring towers, this exclusive collection of spacious 2, 3 & 4 bedroom apartments, Sky Villas & penthouses offers you the very best of 360° living, only 15 minutes from the heart of the City of London.

Early viewing is recommended

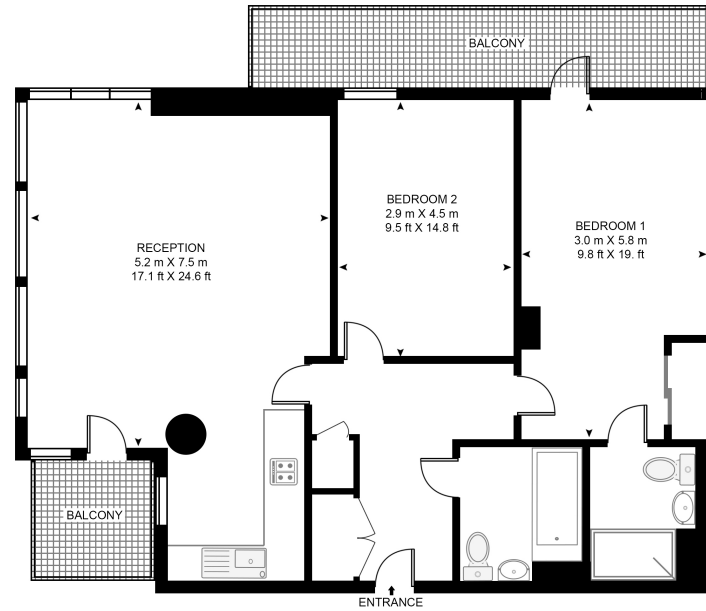
- 2 Bedrooms
- 2 Bathrooms
- 2 Balconies
- 18th Floor
- Stunning views
- Approx. 907 sq ft (84.3 sq m)
- Leasehold
- EPC: B



Floorplan

907 sq ft | 84 sq m

CITY NORTH EAST TOWER
APPROXIMATE GROSS INTERNAL FLOOR AREA 907 SQ.FT (84.3 SQ.M)



HDVA

This floor plan has been defined by the RICS Code of Measurement. This floor plan and all others are for approximate representative purposes only and upon usage is agreed to as such by the client.
WWW: hdvirtualart.com | TEL: 0203.974.1567 | EMAIL: info@hdvirtualart.com

Finsbury Park
Woodberry Park,
London N4 2BL
020 7870 6667
finsburypark@eu.jll.com

Urban living, your way.

jll.co.uk/residential

© 2019 Jones Lang LaSalle IP, Inc. All rights reserved. All information contained herein is from sources deemed reliable; however, no representation or warranty is made to the accuracy thereof.

