



Blackfriars Road, London SE1

Guide price £650,000 Leasehold







Description

Situated on the 7th floor, this stunning apartment boasts specular South Eastern views and offers approximately 695 sq. ft. of living space. The property is offered to a high standard and comprises a double bedroom, spacious reception room and open plan kitchen with AEG appliances, sun room / winter garden with stunning South east facing views of the iconic London Skyline, Porcelain tiled flooring, contemporary bathroom and excellent storage space.

Conquest Tower is part of the 'Blackfriars Circus' development with excellent amenities a 24 hour concierge, residents gym and a stunning roof top terrace with panoramic views across London. Conquest Tower is well situated for the City of London, approximately 0.4 miles from Waterloo Station, 0.3 Miles from Blackfriars Station approximately 0.3 miles from Southwark Station in Zone 1.

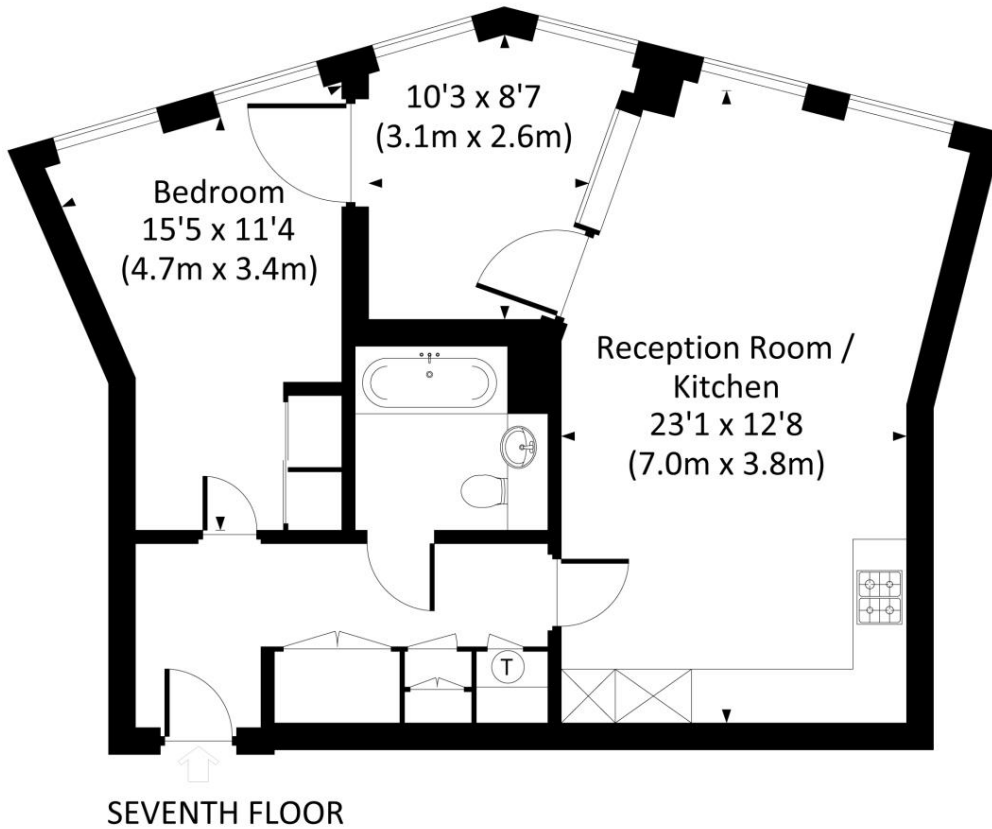
- 1 Bedroom
- 1 Bathroom
- Panoramic views across London
- Winter garden
- 7th Floor modern apartment
- Approx. 695 sq ft (64.6 sq m)
- Designed to an exceptionally high standard
- 24-Hour concierge
- Fitness suite for residents
- Roof terrace with panoramic views over London

Floorplan

695 sq ft | 65 sq m

Conquest Tower, SE1

Approx. gross internal area
695 Sq Ft. / 64.6 Sq M.



All measurements have been made in accordance with RICS code of Measuring Practice which are approximate only and only for illustrative purposes. For the avoidance of doubt, Dowling Jones Design shall not be liable for any reliance on these measurements. © 2021 www.dowlingjones.com 020 7610 9933

City
25 Walbrook The Walbrook
Building,
London EC4N 8AF
+4420 7337 4000

Urban living, your way.

jll.co.uk/residential

© 2019 Jones Lang LaSalle IP, Inc. All rights reserved. All information contained herein is from sources deemed reliable; however, no representation or warranty is made to the accuracy thereof.

