

Sloane Court East

CHELSEA SW3



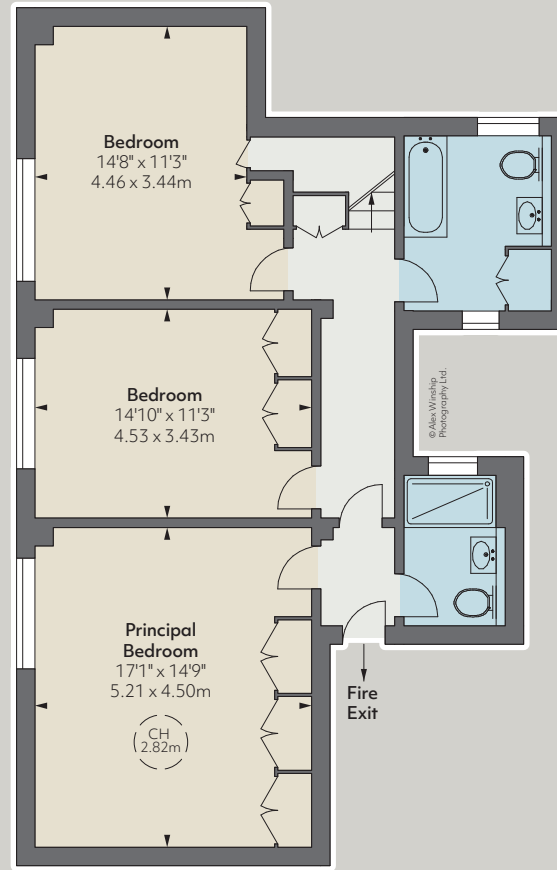
CGI FURNITURE ADDED



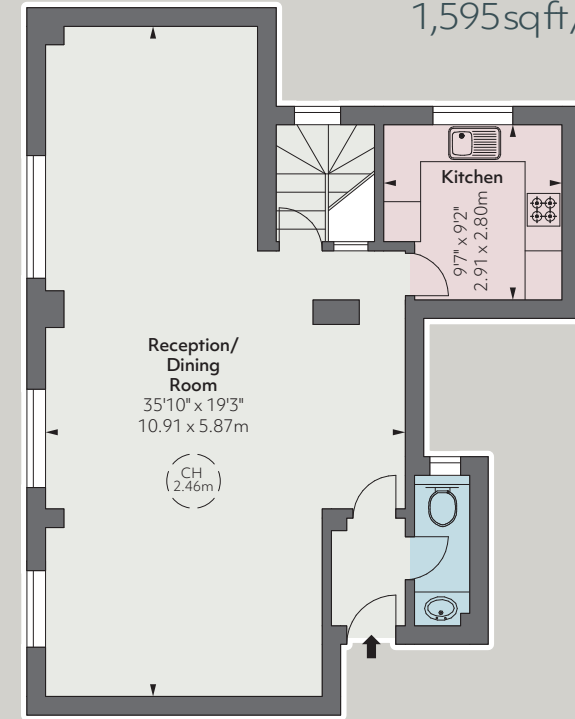
CGI FURNITURE ADDED



CGI FURNITURE ADDED



Lower Ground Floor



Raised Ground Floor

Approximate Gross Internal Area
1,595sqft/148.29sqm



A ground and basement maisonette facing west over the street and having three good sized bedrooms and a large double reception room. The building lies quietly at the northern end of the street near to the junction with Turks Row. Sloane Square and the King's Road are close by.

- 3 Double bedrooms
- Shower room (en suite)
- Bathroom
- Double reception room
- Kitchen
- Cloakroom
- Lift
- Caretaker
- Communal heating and hot water
- EPC: C

Guide Price £2,000,000
Tenure Leasehold, 994 years remaining
Service Charge £2,746.49 for the quarter ending 24/3/21
Ground Rent Peppercorn
Local Authority The Royal Borough of Kensington & Chelsea

Savills Knightsbridge
knightsbridge_sales@savills.com
020 7581 5234
Savills Sloane Street
sloanestreet@savills.com
020 7730 0822
savills.co.uk



JLL Knightsbridge
knightsbridge@eu.jll.com | 020 7306 1600
JLL Chelsea
chelsea@eu.jll.com | 020 7399 5010
jll.co.uk/residential