



**LEGACY TOWER
GREAT EASTERN ROAD
LONDON E15**





Opportunity to purchase within Stratford's popular developments, Legacy Tower E15.

Studio-suite apartment situated on the tenth floor and comprising of approximately 438 square feet. The property boasts an open-plan kitchen/living area with integrated appliances, with a separate sleeping area and bathroom.

The development is located just a short walk from Stratford Underground Station. Residents further benefit from a concierge service, residential gymnasium, lift access and is close to local amenities.

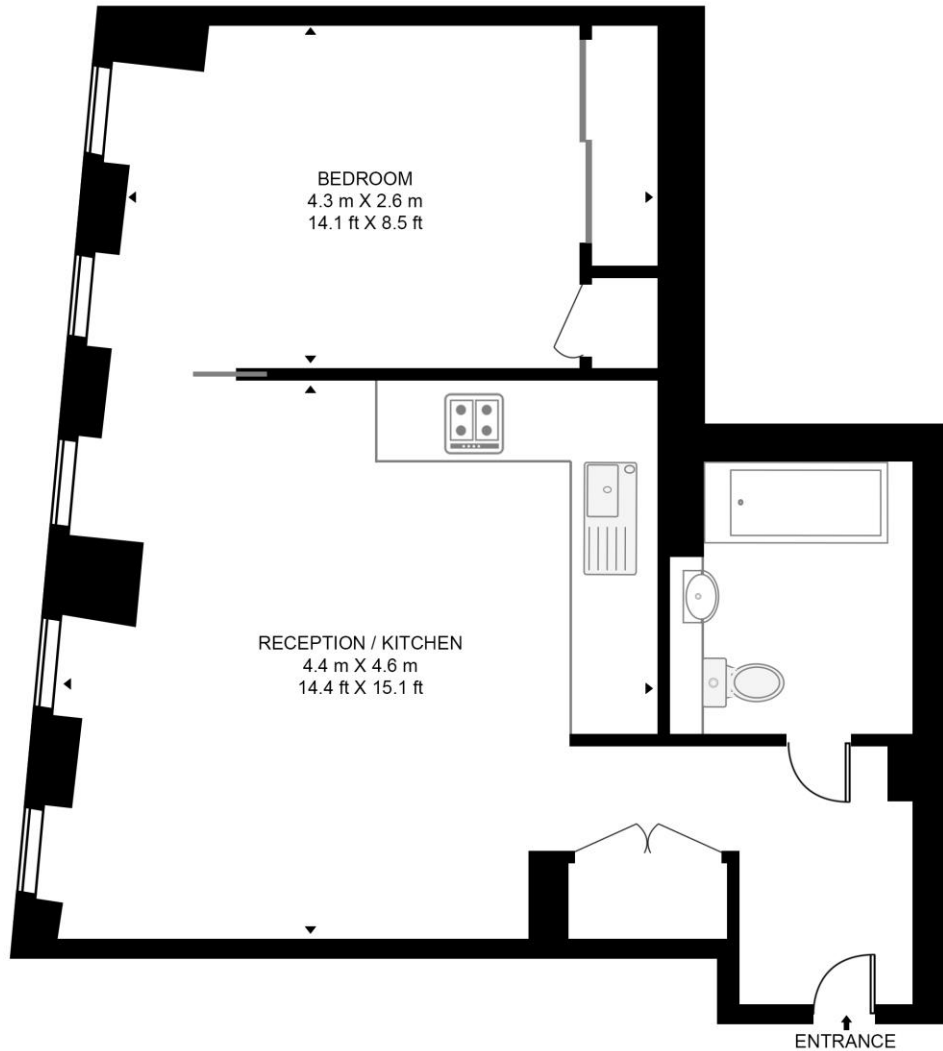
- Studio-suite apartment
- Concierge service
- Residential gymnasium
- 10th Floor
- Lift access
- Views towards Canary Wharf
- Short walk to Stratford Underground Station
- Short walk to Westfield' Stratford City
- EPC Rating: B

OFFERS IN EXCESS OF
£400,000

GROSS INTERNAL AREA
Approx. 438 sq.ft (40.7 sq.m)

LEGACY TOWER

APPROXIMATE GROSS INTERNAL FLOOR AREA 438 SQ.FT (40.7 SQ.M)



TENTH FLOOR

HDVA

This floor plan has been defined by the RICS Code of Measurement. This floor plan and all others are for approximate representative purposes only and upon usage is agreed to as such by the client.

WWW: hdvirtualart.com | TEL: 0203.974.1567 | EMAIL: info@hdvirtualart.com

Unex Tower
5 Station Street
London
E15 1DA

These particulars are for general information only and do not constitute any part of an offer or contract. All statements contained therein are made without responsibility on the part of the vendors or lessors and are not to be relied upon as statement or representation of fact. Intending purchasers or lessees must satisfy themselves, by inspection, or otherwise, as to the correctness of each of the statements or dimensions contained in these particulars..