



## Gillingham Row, London SW1V

Price £625 per week - Furnished







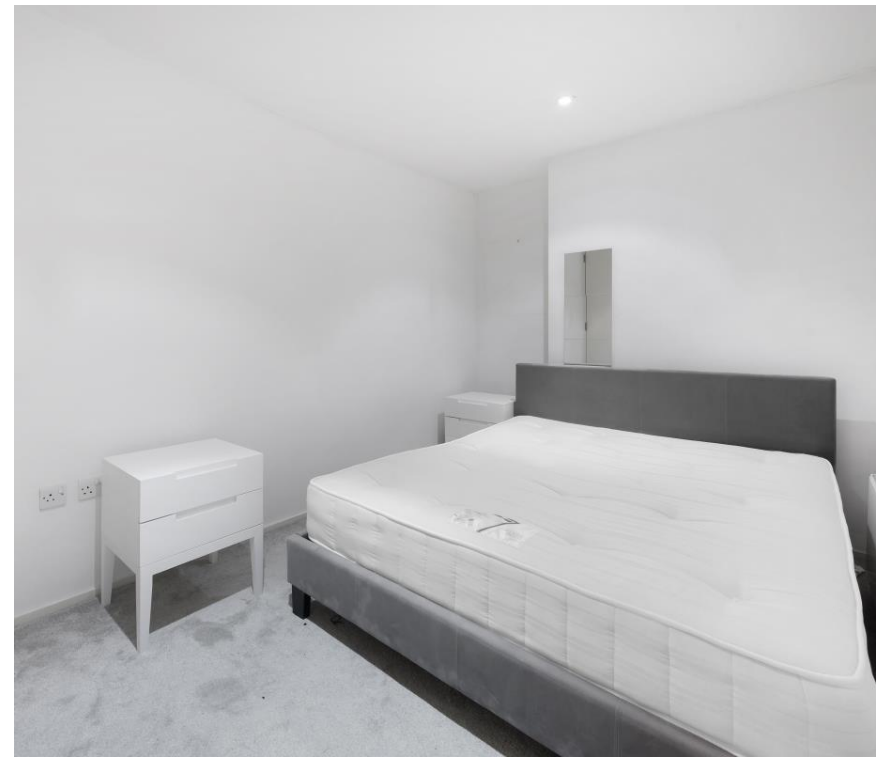


# Description

A well presented house furnished in a contemporary style and offering well proportioned accommodation throughout. The property consists of master bedroom with en suite shower room, second double bedroom, one bathroom, guest cloakroom, a large reception room, study and a fully fitted kitchen/breakfast room. The property is centrally located and offers access to a wide array of shops and restaurants, as well as being well connected via bus routes, Victoria Underground and Overland Station.

As well as paying the rent, you may also be required to make permitted payments. Please visit [jll.co.uk/fees](http://jll.co.uk/fees) for details of fees which may be payable when renting a property. If your tenancy does not qualify as an AST, additional fees may apply.

- Furnished house
- 2 Double bedrooms
- 1 Bathroom
- 1 Shower room (en suite)
- Guest cloakroom
- Reception room
- Kitchen/dining room
- Study
- Approx. 940 sq ft (87 sq m)
- EPC: C

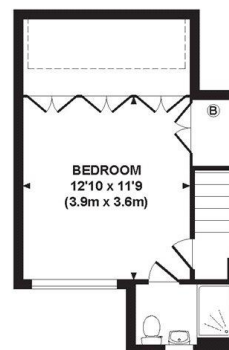




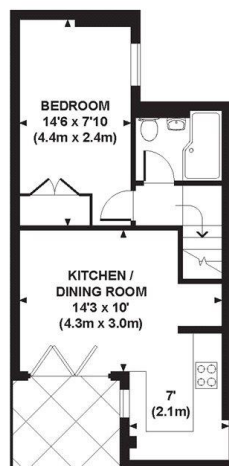
# Floorplan

940 sq ft | 87 sq m

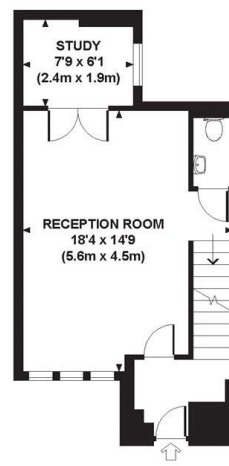
Approx. gross internal area  
940 Sq Ft. / 87 Sq M.



FIRST FLOOR



LOWER GROUND FLOOR



GROUND FLOOR

Every attempt has been made to ensure the accuracy of this floorplan however, measurements are approximate and for illustration purposes only. Not to scale.  
Photography, floorplan and brochure design by Dowling Jones Design www.dowlingjonesdesign.com 020 7386 1014 / 01793 974 209



Westminster  
31 Palmer Street,  
Westminster SW1H 0NP  
+4420 7306 1630  
westminster@eu.jll.com

*Urban living, your way.*

[jll.co.uk/residential](http://jll.co.uk/residential)

© 2019 Jones Lang LaSalle IP, Inc. All rights reserved. All information contained herein is from sources deemed reliable; however, no representation or warranty is made to the accuracy thereof.

