



**CASSIA POINT, GLASSHOUSE GARDENS,
STRATFORD
LONDON E20**





Exclusive to the market becomes available this one of a kind 26th floor 3 double bedroom 2 bathroom apartment with a 670sqft private terrace and a parking space in one of Stratford City's most sought after developments, Glasshouse Gardens E20.

Spanning over 1100 sq ft and benefitting from a 'premium specification' upgrade including upgraded appliances, flooring and air-conditioning this is the only apartment within the entire development offering 2 outside spaces, one of which a 670sqft private terrace along with 1 of only 15 parking spaces the development has to offer.

The apartment comprises 3 double bedrooms, 2 bathrooms (ensuite to main), Large and ultra-modern Kitchen/Diner leading to private balcony, living room leading to private 670sqft terrace with breath taking views of the London and beyond and ample storage throughout.

The development is directly opposite the amenities of Westfield Shopping Centre and a short walk from Stratford Underground Station. Residents further benefit from a 24hr concierge service, secure intercom entry, lift access and residents' gym.

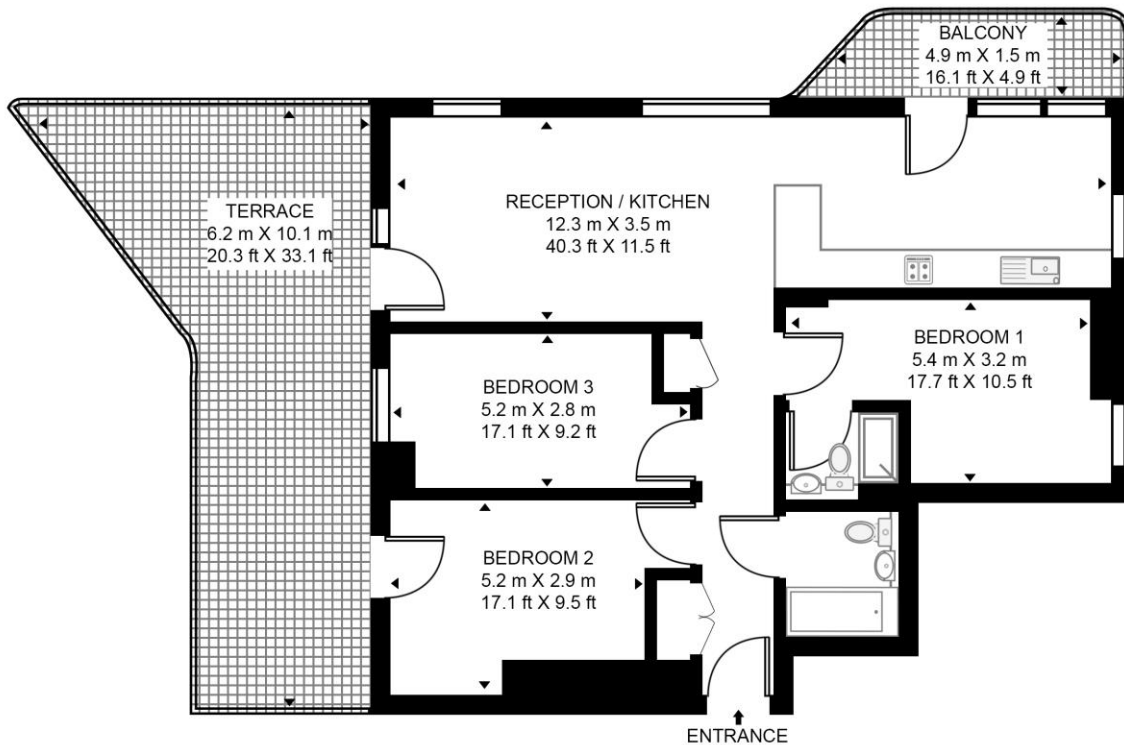
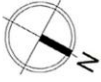
- 3 Bedroom
- 2 Bathroom
- 26th Floor
- Panoramic Views of London
- Premium Specification
- Air-Conditioning
- Parking
- Approx. 670sq ft Private Terrace
- Concierge
- Residents Gym
- EPC: B

PRICE
OIEO £1,100,000

GROSS INTERNAL AREA
Approx. 1175 sq ft (109.2 sq m)

CASSIA POINT

APPROXIMATE GROSS INTERNAL FLOOR AREA 1175 SQ.FT (109.2 SQ.M)



TWENTY SIXTH FLOOR



This floor plan has been defined by the RICS Code of Measurement. This floor plan and all others are for approximate representative purposes only and upon usage is agreed to as such by the client.

WWW: hdvirtualart.com | TEL: 0203.974.1567 | EMAIL: info@hdvirtualart.com

Unex Tower
5 Station Street
London
E15 1DA

These particulars are for general information only and do not constitute any part of an offer or contract. All statements contained therein are made without responsibility on the part of the vendors or lessors and are not to be relied upon as statement or representation of fact. Intending purchasers or lessees must satisfy themselves, by inspection, or otherwise, as to the correctness of each of the statements or dimensions contained in these particulars..